

GENERAL NOTES & MATERIAL SPECIFICATIONS:

1. **Concrete for footing:** 2,500 psi min. strength or optional mix is 1 part cement, 2-1/2 parts sand, 3-1/2 parts gravel of 3/4" maximum size, 7 gallons of water per 90 lb. sack of cement.
2. **Mortar:** 1,800 psi min. strength or optional mix is 1 part cement, 4-1/2 parts sand, 1/2 part lime.
3. **Grout:** 2,000 psi min. strength or optional mix is 1 part cement, 3 parts sand, 2 parts pea gravel of 3/8" maximum size.
4. **Reinforcing steel:** must be deformed bar and conform to ASTM A615 Grade 40 or 60. Minimum lap length shall be 24".
5. **Concrete blocks:** 1,500 psi min. compressive strength.
6. If any portion of the wall is to extend across a property line, written permission from the adjacent property owner is required.

REQUIRED INSPECTIONS:

1. **Footing** (Footing trench with steel in place prior to placing the concrete).
2. **Reinforcing steel** (Steel in wall prior to grouting). **Mid-height steel and grouting inspection required when 6" slumpstone block is used.**
3. **Final** (wall completed and site clean).

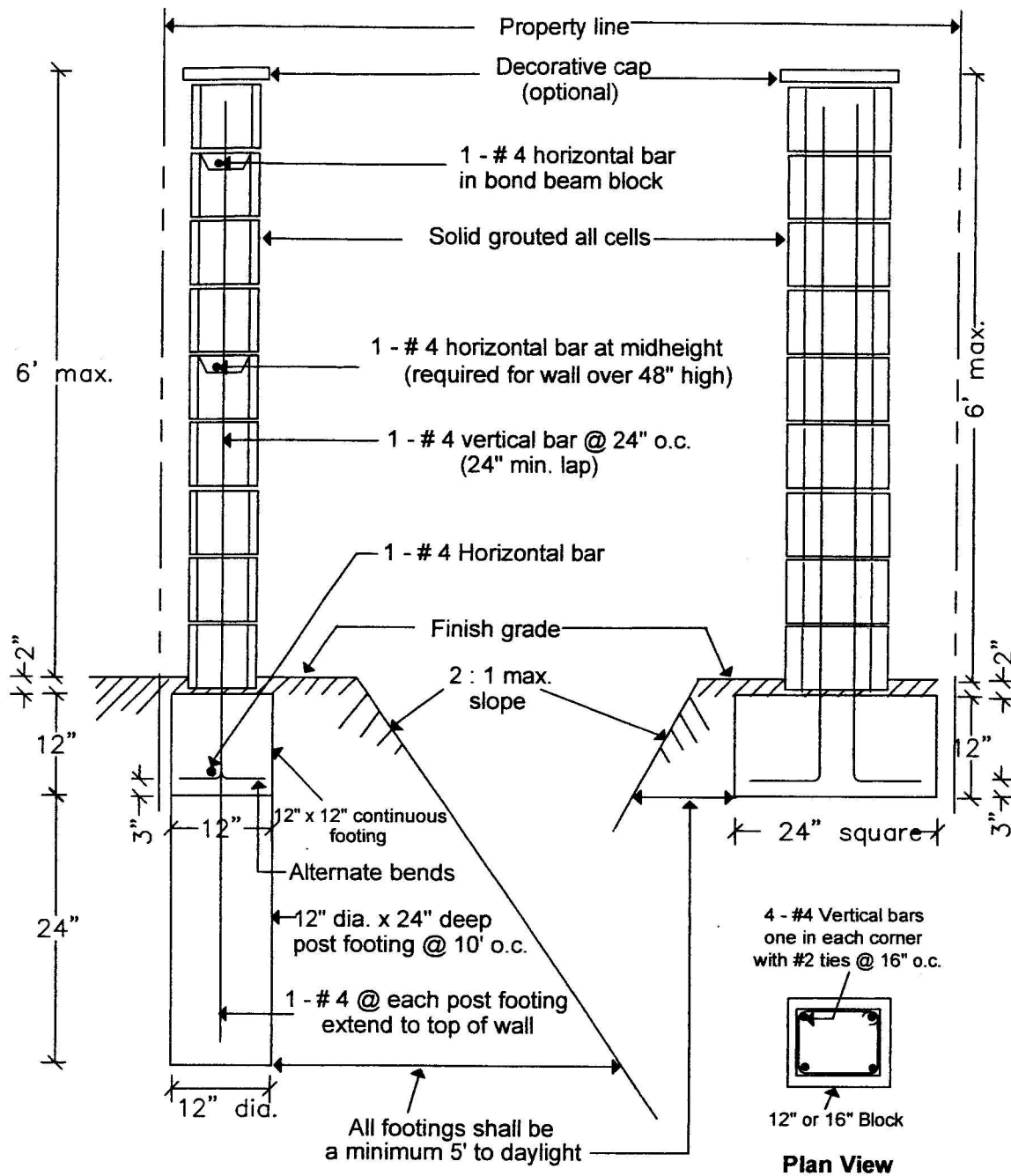
Approved: *[Signature]* (Building Official), Date: 2/09

Drawn by: SG	Rev no: 1	Dwg no: 1
-----------------	--------------	--------------

CONCRETE BLOCK WALL

CITY OF ONTARIO - BUILDING DEPT.

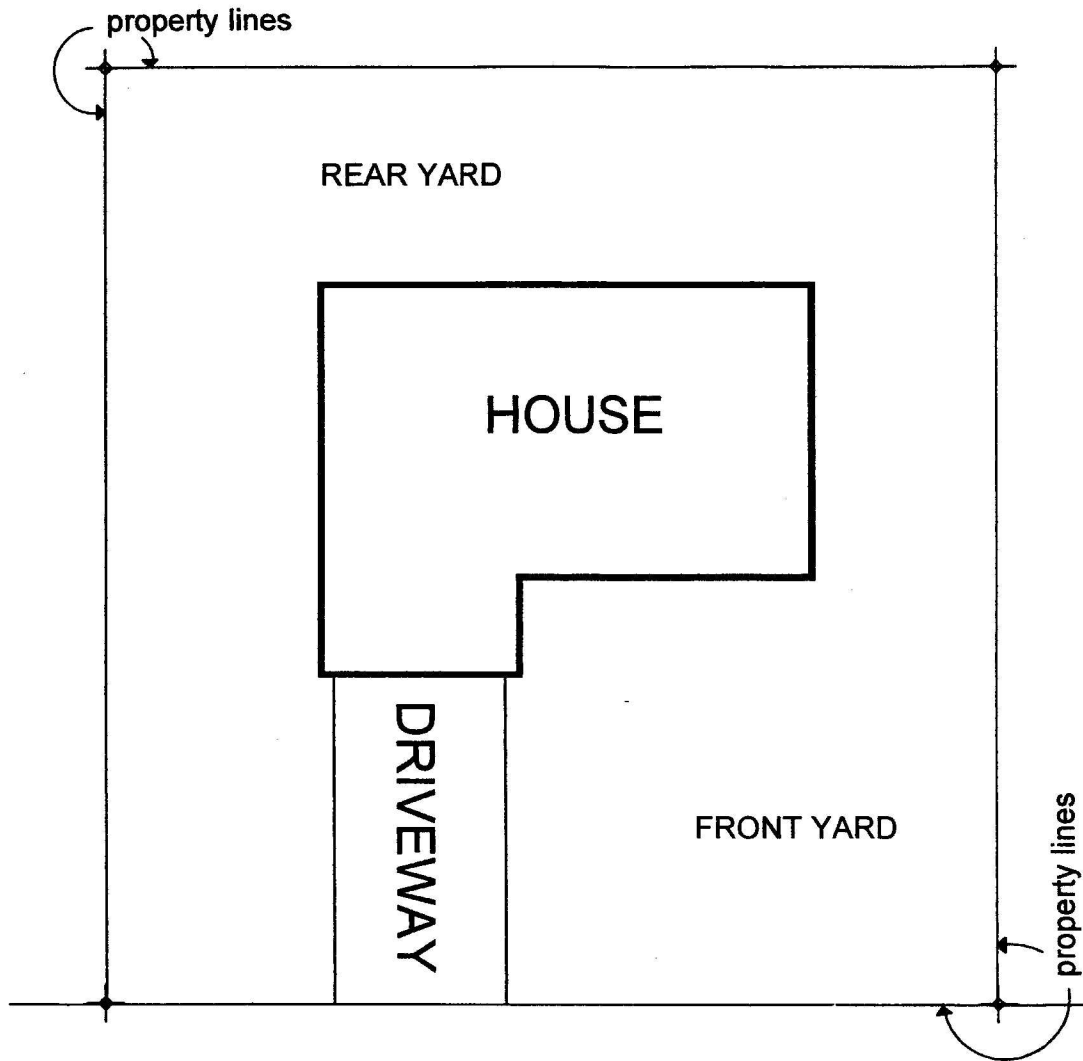
Page 1 of 2



ALTERNATE WALL WITH POST FOOTING


PILASTER

Approved:		(Building Official), Date:		CONCRETE BLOCK WALL	
Drawn by: SG	Rev no:	Dwg no: 2			
CITY OF ONTARIO - BUILDING DEPT.				Page 2 of 2	



Instruction:

Show location of the proposed concrete block wall on the site plan above and indicate the wall dimensions (length and height).

 <p>BUILDING DEPARTMENT</p>	<p>Site address:</p> <p>_____</p>
---	-----------------------------------