

SECTION 10 IMPLEMENTATION

10.1 Introduction

The provisions contained herein are intended to regulate development within the West Haven Specific Plan community. These regulations provide for the development of uses described in the West Haven Specific Plan.

10.2 Phasing Concept

Phasing of the West Haven Specific Plan will meet the following objectives:

- The orderly build-out of the mixed-use community based upon market and economic conditions.
- The provision of adequate infrastructure and public facilities concurrent with development of each phase.
- The protection of public health, safety and welfare.

Development phasing within the West Haven Specific Plan will be determined by the various developers based upon real estate market conditions. Phasing will occur as appropriate levels of infrastructure, community facilities and open space dedications are provided. Phasing sequencing is subject to change over time to respond to these various factors and individual phases may overlap or develop concurrently. Development will be implemented through the approval, by the City, of Tentative Tract / parcel maps, conditional and permitted development plan permits.

The concept phasing is intended to provide flexibility to address the multiple ownerships, which to this date have not been organized into a single development entity. There is the possibility that all land use areas, within the Specific Plan Project site, will not be developed concurrently. The phasing concept addresses the lack of control over these properties by incorporating the uncontrolled properties into the last phase of development and creating an interim street

and permanent utility improvements to serve the Planning Areas, which are developed first.

Contingent upon backbone utility availability, development of the current developer controlled Land Use Areas (1, 2, 4, 5, 8 and 9) shall not be dependent on the acquisition of, or concurrent development of the uncontrolled properties. If a Residential Planning Area cannot be developed, the development that is permitted will provide viable, future utility and circulation connections to the undeveloped properties, as necessary. This same consideration shall apply to the development of the Neighborhood Center Commercial Planning Area and the school site. By designing areas to be initially developed to accommodate future development, compliance with the goals and objectives of the Specific Plan will be assured.

It is likely that all or a portion of the off-site and project adjacent utilities will comprise the initial phase of development. Appropriate levels of infrastructure and community facilities will be installed, as required by the City, and public services will be available to serve each phase of residential and commercial development as it occurs. The developers of the Specific Plan will be responsible for the construction of these facilities.

10.2.1 Concept Phasing Schedule

The Concept Phasing is based on the “*West Haven Land Use Plan*,” *Exhibit 3-1*, and *Table 10-1*, “*Concept Phasing Schedule*.” The phasing could change, based on refinement during the tentative approval stage. Additional off-site improvements and/or on-site improvements may be required by the City as determined during the development review process. If major deviations from the proposed Concept Phasing Schedule are identified as a result of market changes or other unexpected circumstances, an amended phasing plan for that portion of the Specific Plan to be developed will be prepared and approved before tentative maps or entitlement plans are filed. See *Table 10-1*, “*Concept Phasing Schedule*” for projected timing and estimated build-out of each Planning Area by Phase, as submitted by the developers of each planning area.

Table 10-1
CONCEPT PHASING SCHEDULE

	MONTHS**																			
	1	2	3	4	5	6	7	8	9	10	11	12	13	14	15	16	17	18	19	
Planning Area 1	Phase I (6 D.U.) (*)		Phase II (25 D.U.)			Phase III (26 D.U.)		Phase IV (28 D.U.)			Phase V (27 D.U.)			Phase VI (27 D.U.)			Phase VII (23 D.U.)		Phase VIII (12 D.U.)	
Planning Area 2 (*)	(Phasing not determined at this time)																			
Planning Area 3 (*)	(Phasing not determined at this time)																			
Planning Area 4	Phase I (21 D.U.) (*)			Phase II (21 D.U.)			Phase III (21 D.U.)			Phase IV (21 D.U.)			Phase V (22 D.U.)							
Planning Area 5 (*)	(Phasing not determined at this time)																			
Planning Area 6	(Development Fees will be in place for park buildout)																			
Planning Area 7 (*)																				
Planning Area 8	Phase I (20 D.U.) (*)			Phase II (18 D.U.)			Phase III (18 D.U.)			Phase IV (18 D.U.)			Phase V (18 D.U.)							
Planning Area 9	Phase I (6 D.U.) (*)					Phase II (29 D.U.)		Phase III (30 D.U.)		Phase IV (30 D.U.)		Phase V (31 D.U.)		Phase VI (17 D.U.)						

Notes:

- (*) Buildout is undetermined at this time
- (**) Assumes month 1 as being the date anticipated when all Master Planned backbone utilities to serve West Haven will be installed.
- (+) The following will be constructed during Phase 1 Development:
 1. **Planning Area 1:** Full 1/2 Street Improvements on Riverside Drive and on Haven Avenue to the north boundary of Planning Area 3.
 2. **Planning Area 4:** Full 1/2 Street Improvements on Riverside Drive and Chino Avenue, along Planning Area 4 boundary.
 3. **Planning Area 8:** Full 1/2 Street Improvements on Haven Avenue along Planning Area 8 boundary.
 4. **Planning Area 9:** Full 1/2 Street Improvements on Turner Avenue along Planning Area 9 boundary.
 5. **Planning Areas 1, 4, 8 and 9:** All interior circulation and in-tract utility lines will be constructed during each Phase.

10.2.2 Community Facilities and Services

The timing for installation of community facilities and payment of impact fees for public services for the Specific Plan will be determined as part of the City's approval process in accordance with the provisions of the existing City fee ordinances. Community facilities, such as the bike route will be developed in conjunction with construction of the public street improvements. Those portions of the Neighborhood Park, paseos and open space areas, adjacent to individual development within each neighborhood, will be constructed to provide the amenity as development progresses. Build-out of the Neighborhood Park will be in accordance with the direction of the City of Ontario's unit limit, which is currently at a 250 dwelling unit build out.

10.3 Definition of Terms

The meaning and construction of words, phrases, titles and terms shall be the same as provided in the City of Ontario Development Code, except as otherwise specifically provided within the West Haven Specific Plan text.

10.4 Applicability

The development regulations contained herein provide specific standards for land use development within the West Haven Specific Plan area. The adoption of the Specific Plan by ordinance, supersedes otherwise applicable City of Ontario Development Regulations unless stated herein to the contrary. Whenever the provisions and development standards contained herein conflict with those contained in the City of Ontario Development Code, the provisions of the West Haven Specific Plan shall take precedence. Where the Specific Plan is silent, City codes shall apply.

10.5 Administration

The West Haven Specific Plan is adopted by resolution and will serve as the implementation tool for the General Plan as well as the zoning for the Project Site. The Specific Plan addresses general provisions, permitted uses, development standards and design guidelines.

10.6 Methods of Interpretation

Development within the West Haven Specific Plan area shall be implemented through the approval of parcel maps and Tentative Tract maps by the City of Ontario. The administration process described below provides for the mechanisms for review and approval of development projects within the Specific Plan consistent with the Specific Plan objectives.

Unless otherwise provided, any ambiguity concerning the content or application of the West Haven Specific Plan shall be resolved by the Planning Director or his/her designee, hereinafter referred to as Director, in a manner consistent with the goals, policies, purpose and intent established in this Specific Plan.

10.7 Implementation

All development proposals within the West Haven Specific Plan shall be subject to the implementation procedures established herein. Whenever the provisions contained herein conflict with those contained in the City of Ontario Development Code, the provisions of the Specific Plan shall take precedence.

10.7.1 Development Agreement Required

Unless done in a coordinated matter and with adequate fiscal planning, development projects within the New Model Colony are likely to present a challenge in their implementation because of the lack of existing public facilities, including streets, sewerage, transportation, drinking water, school and utility facilities. California law has established a mechanism for ensuring the adequate provision of such facilities, while at the same time providing assurances to applicants that, upon approval of the project, the applicants can proceed with their projects. Approval of the Specific Plan without a development agree-

ment may result in a waste of resources, escalate the cost of housing to the consumer, and discourage investment in and commitment to comprehensive planning, as envisioned by the City, which seeks to make maximum efficient utilization of resources at the least economic cost to the public. Therefore, a statutory development agreement, authorized pursuant to California Government Code sections 65864 *et seq.*, shall be required as part of the approval of this Specific Plan. For the above-mentioned reasons, the development agreement for this Specific Plan shall include, among other things, methods for financing acquisition and construction of infrastructure, acquisition and development of adequate levels of parkland and schools, as well as the provision of adequate housing opportunities for various segments of the community consistent with the regional housing needs assessment. Such a development agreement shall have been fully approved before the issuance of the first building permit for this project.

10.7.2 Specific Plan Revisions

Revisions to the Specific Plan may be requested by the applicant or by the City at any time pursuant to Section 65453(a) of the Government Code. Revisions shall be processed pursuant to the provisions of the Government Code for the Specific Plan and the City of Ontario Development Code. In the event the proposed revision requires supplemental environmental analysis pursuant to the California Environmental Quality Act (CEQA), the applicant(s) are responsible for preparing the necessary CEQA documentation.

10.7.3 Minor Adjustments in Substantial Conformance with the Specific Plan

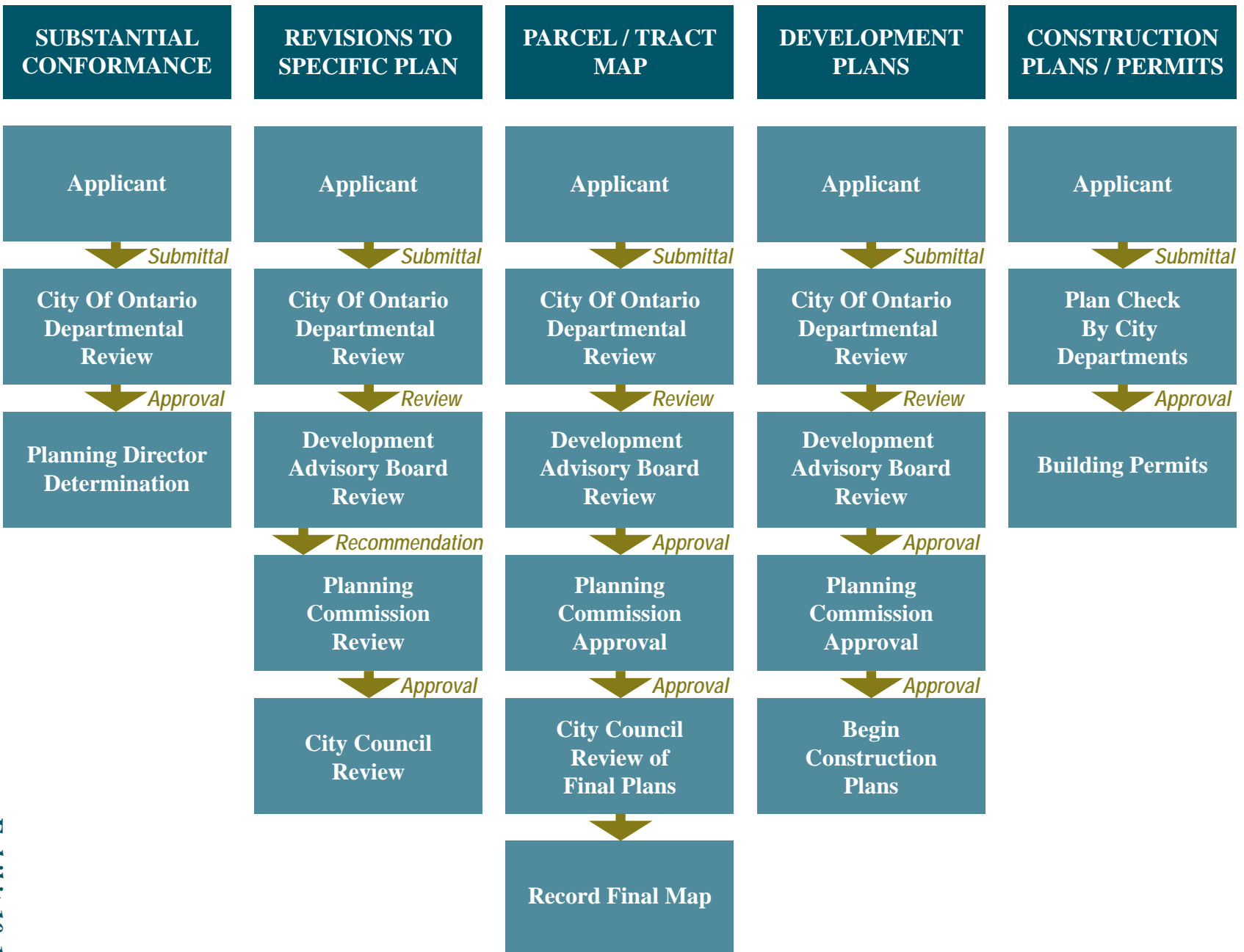
The purpose of the substantial conformance process is to provide a mechanism to allow flexibility in development of the Project Site by permitting minor modifications to the land use plan, project phasing, design guidelines and development regulations, with the exception of permitted uses. This procedure is intended to provide a simplified means of considering minor adjustments from certain development standards and guidelines set forth in the West Haven Specific Plan which are found to be in substantial conformance with the general intent of this Specific

Plan and which are not detrimental to the public health, safety or welfare.

The following constitute minor adjustments to the Specific Plan, not requiring a Specific Plan Revision and are subject to review and approval by the Director. The Director shall have the discretion to refer any such request for modification to the Planning Commission or the City Council.

- a. Change in utility and/or public service provider.
- b. Roadway alignment when the changes results in a centerline shift of less than 40 feet.
- c. An increase of more than ten percent (10%) to the number of units within an individual phase provided the total number of units for the entire Specific Plan area does not exceed that established in the Specific Plan.
- d. Adjustment of architectural style, product type and lot sizes in any neighborhood, assuming the new architectural style, product type and lot sizes meet the policy goals of the New Model Colony, *Design Guidelines in Section 8* and *Development Standards in Section 9*.
- e. Adjustment of a phase boundary provided the total acreage of the affected phase area does not increase or decrease by more than 20% of the total stated in the approved Specific Plan.
- f. Minor changes to landscape materials, wall materials, wall alignment, entry design and streetscape design which are consistent with the conceptual design set forth in the design guidelines contained with the Specific Plan.
- g. Other modifications of a similar nature to those listed above, which are deemed minor by the Director, which are in keeping with the purpose and intent of the approved Specific Plan and which are in conformance with the General Plan.

See *Exhibit 10-1* for the “*Project Review and Approval Process Chart*.”



PROJECT REVIEW AND APPROVAL PROCESS CHART
Exhibit 10-1

10.7.4 Appeals

Appeals shall be processed consistent with the provisions of the City of Ontario Development Code, Article 5, “Appeals.”

10.7.5 Development Permits

All development within the Project Site shall be subject to the Development Plan Review Process as established in Article 8 of the City of Ontario Development Code. Adoption of the West Haven Specific Plan by the City includes adoption of the design guidelines contained herein, which shall provide direction for the design of development projects within the Project Site. Where the Specific Plan design guidelines are silent, the applicable design guidelines contained within the City’s Development Code shall apply. The design guidelines are intended to be flexible in nature while establishing basic evaluation criteria for the review by the City of developer projects during design review.

10.7.6 Subdivision Maps

Approval of one or more subdivision maps will occur concurrently with or subsequent to the adoption of the West Haven Specific Plan creating parcels for development. All future subdivision maps will be reviewed and approved pursuant to applicable provisions of the Subdivision Map Act, the City of Ontario Development Code and Subdivision Ordinance and consistent with the applicable provisions contained within the Specific Plan.

10.8 Maintenance Responsibilities

Improvements constructed within the West Haven Specific Plan will be maintained through a combination of City, Master Homeowners Association, Private Homeowners Association, Private (Homeowners/ Commercial Business Property Owners) and Utility Entities (SCE, SCG and Verizon) as listed on **Table 10-2, “Maintenance Responsibility Matrix.”**

A Master Home Owners Association (Master HOA), including all residential property owners, will be formed within the West Haven Specific Plan. This Master HOA will be responsible for the maintenance

of the Five (5) Acre Neighborhood Park (Planning Area 6).

During the course of maintenance of public utilities within private streets, the City will restore the streets per current City standards for trench backfill, pavement repair, and hardscaping or landscaping, as applicable. Restoration of any enhancements above and beyond City standards, including but not limited to architectural paving, hardscaping and landscaping enhancements shall be the responsibility of the HOA or other entity maintaining those enhancements. This applies to all areas where public utilities are located including but not limited to public and private streets, gated communities, alleys, etc.

10.9 Project Financing

The financing of construction, operation and maintenance of public improvements and facilities [the “facilities”], and public services will include funding through a combination of financing mechanisms. Final determination as to the facilities to be constructed and as to maintenance responsibilities – whether publicly or privately maintained, will be made prior to recordation of final maps. In order for the project to be fiscally self-sufficient, the following financing options can be considered for implementation:

Facilities and Services

- Private capital investment for the construction of the facilities
- Communities Facilities District (CFD) established pursuant to the Mello-Roos Community Facilities Act of 1982, or other special district, to provide funding for the construction of a variety of public facilities and the provision of public services.

Operation and Maintenance

- By individual private property owner.
- By private, Property Owners or Home Owners Associations.

- By *Community Facilities District* (CFD) established pursuant to the Mello-Roos Community Facilities District Act of 1982, or other special district.

City Council approval is a prerequisite for the implementation of any and all special district financing mechanisms. The use of the Mello-Roos Communities Facilities District Act of 1982 [the “Act”] to finance public facilities and services will be at the City’s sole discretion. Moreover, the use of the Act must be consistent with the City’s adopted goals and policies concerning the use of the Act.

	City CFD	Master Homeowners Association	Private Homeowners Association	Private Homeowners	Utility Entity
Master Plan Roadways (Riverside Drive, Chino Avenue, Haven Avenue, Turner Avenue)	X				
Parkway of Master Plan Roadways/ Neighborhood Edges (curb to perimeter walls including landscape, sidewalks, street lights)	X				
Interior Project Streets (curb to curb for Primary Entry Street, Secondary Entry Streets, Neighborhood Streets)	X				
Parkways of Interior Project Streets (landscaping and sidewalks) ⁽²⁾			X		
Interior Streets within gated Communities or Multi-Family developments			X		
Interior Tract Graffiti Removal			X		
Private Recreation Areas			X		
Monument Signs (within Neighborhood Edges on Master Planned Roadways)	X				
Monument Signs within a tract entry			X		
Traffic Signals and Street Lights	X				
Traffic Control Signs	X				
Alleys			X		
Community Trail (SCE Corridor Trail or easement trail)	X				
Off-site and on-site water, sewer and storm drain improvements (excluding laterals) ⁽¹⁾	X				

Notes:

1. Only those facilities in the Public Roads and/or Easements

2. Including restoration work following public street repairs.

Table 10-2
MAINTENANCE RESPONSIBILITY MATRIX

	City CFD	Master Homeowners Association	Private Homeowners Association	Private Homeowners	Utility Entity
Neighborhood Park		X			
Pocket Parks			X		
Linear Parks			X		
Front Yard/Corner Streetside Landscaping Areas for Single Family Homes (Detached)				X	
Front Yard/Corner Streetside Landscaping Areas for Multi-Family Homes (Attached)			X		
Private interior yard walls			X	X	
Community Theme Wall on Master Planned Roadways (outside face for graffiti removal and paint)	X				
Community Theme Wall on Master Planned Roadways: Surface (interior) opposite streetside (structural integrity & face repairs)			X		
Alley Landscaping and Lighting			X		
Electricity and Natural Gas					X
Communications Systems	X				X
Police and Fire	X				
NPDES Facilities (On-site) / W.Q.M.P. ⁽¹⁾	X				
NPDES Facilities/Interim Detention Basin on Private Property			X		

Notes:

1. Only those facilities in the Public Roads and/or Easements

2. Including restoration work following public street repairs.

Table 10-2 (continued)
MAINTENANCE RESPONSIBILITY MATRIX

APPENDIX I GENERAL PLAN CONSISTENCY

California Government Code (Title 7, Division 1, Chapter 3, Article 8, Section 65450-65457) permits the adoption and administration of specific plans as an implementation tool for elements contained in the local general plan. Specific plans must demonstrate consistency in regulations, guidelines, and programs with the goals and policies set forth in the general plan.

The West Haven Specific Plan has been prepared in conformance with the goals and policies of the City of Ontario General Plan. The *“City of Ontario New Model Colony Specific Plan Policy Matrix”* which follows, describes the manner in which the Specific Plan complies with the General Plan.

Ontario Sphere of Influence Specific Plan Policy Matrix

Following are policies from the Ontario SOI General Plan; they are intended to achieve the “vision” for the Sphere of Influence planning area as outlined in Chapter 2 of the SOI General Plan. The policy matrix is divided into five (5) parts, consisting of the five (5) elements of the SOI General Plan Amendment: I. Community Development; II Infrastructure; III Aesthetic, Cultural, Open Space, and Recreational Resources; IV Natural Resources and V Hazards. The following matrix is intended to determine the adequacy of the proposed Specific Plan in meeting the policies of the SOI General Plan. The checklist shall be completed and submitted with the Specific Plan application. Check if the Specific Plan fully complies or partially complies with each respective policy, or if not applicable. A complete explanation is required in instances whereby the proposed plan does not fully comply with a policy or if not applicable.

Policy	Fully Complies	Partially Complies	S.P Sec. No.	N/A
PART I: COMMUNITY DEVELOPMENT				
1.1 Role of Sphere of Influence General Plan				
1.1.1, 1.1.5 The proposed Specific Plan reflects the types, organization and distribution of land uses depicted on the Sphere of Influence General Plan Land Use Plan (Figure 3-5) and Development Capacity Table (Table 3-3). The Plan incorporates the minimum and does not exceed the maximum amount of development prescribed in Table 3-4 of the SOI General Plan, where applicable, including other uses such as greenways that are specified by the SOI General Plan policies, but not tabulated in Table 3-4	X		1 and 3	
Comments:				
1.1.4 The Proposed Specific Plan encompasses sub area boundaries designated on Figure 3-6 of the Sphere of Influence General Plan and sufficient land to constitute a significant portion of a distinct and cohesive neighborhood or district, as depicted on Figure 3-7 of the Sphere of Influence General Plan.	X		1 and 3	
Comments:				

Policy		Fully Complies	Partially Complies	S.P Sec. No.	N/A
<p>Sub area boundaries may be modified on the basis of the following conditions (check all that apply if sub area boundaries are not entirely reflected by proposed Specific Plan):</p> <p><i>Note adjustments to sub area boundaries shall be accompanied by an equivalent adjustment of the development capacity, maintaining the overall coverage densities depicted on the SOI General Plan Land Use Plan.</i></p> <ul style="list-style-type: none">to achieve unified districts and neighborhoods;to account for defined market demands regarding the types and scale/acreage of development that should be accommodated;to reflect the location of major roads, utility corridors and easements, flood control improvements, natural resource areas, and public properties;to reflect property subdivisions and ownerships; andto consider appropriate infrastructure and public service phasing.		X X X X	1 1 1 1		X
Comments:	The West Haven boundary was not due to a reflection of the above item.				
1.2 Structure and Organization of Land Use:					
1.2.1	The proposed Plan provides for integrated development of distinct residential neighborhoods and major regional serving activity centers and corridors that are differentiated by their functional role, uses, and character. Each is conceived as a uniquely identifiable place, rather than a fragment of a continuous/undifferentiated urban area.	X		1 and 3	
Comments:					
1.2.2	The Plan provides for a balance of land uses within each neighborhood and district in accordance with phasing policies of the SOI General Plan.	X		1 and 3	
Comments:					
1.2.3	The Plan links neighborhoods, centers, and corridors by transportation, utility, and greenways/open space networks. These may also be used to establish clear boundaries between distinct neighborhoods and/or centers.	X		1, 3, and 4	

CITY OF ONTARIO NEW MODEL COLONY SPECIFIC PLAN POLICY MATRIX

Policy		Fully Complies	Partially Complies	S.P Sec. No.	N/A
Comments:					
1.2.4	The Plan includes major amenities that provide identity and enhances character including a large scale park (“Village Green”), lake / streams, and golf courses.				X
Comments:	<i>The General Plan does not designate an area within the West Haven Specific Plan for a Village Green, lake/streams, or golf course.</i>				
1.2.5	The Plan includes an educational campus as the “centerpiece” of community identity and organization.				X
Comments:	<i>The General Plan does not designate an area within the West Haven Specific Plan for an educational campus..</i>				
1.2.6	<p>The Plan includes elements that provide linkages and continuity with uses abutting the Sphere of Influence, including:</p> <ul style="list-style-type: none"> continuity and linkage of transportation and utility infrastructure continuity of street trees and landscaped median along Euclid Avenue Pedestrian linkages to residential areas north of Riverside Drive continuity of commercial centers at the Riverside Drive/ Euclid Avenue and Riverside Drive/Milliken Avenue intersections; and relationship to existing and planned land uses on the west side of Euclid Avenue (City of Chino), north side of Riverside Drive (City of Ontario), and east side of Milliken Avenue (Riverside County)--by the use of complementary and/or transitional land uses and densities and streetscape improvements. 	X		3 and 4	X
		X		3 and 4	
		X		3 and 4	X
		X		3 and 4	
Comments:	<i>The West haven Specific Plan does not include Euclid Avenue or Milliken Avenue</i>				
1.2.7	The Specific Plan establishes clearly defined “edges” for the Sphere of Influence, including landscape setbacks, transitional densities, and other suitable techniques that avoid the use of walls and creation of “walled” enclave.	X		3 and 4	
Comments:					

Policy		Fully Complies	Partially Complies	S.P Sec. No.	N/A
1.2.8	The Specific Plan includes measures to minimize potential impacts of environmental hazards including flooding, and noise. The Plan provides for the use of electrical, transmission corridors, flood channels, and similar elements to form “edges” for residential neighborhoods and centers and/ or accommodates public greenways / corridors.	X		3 and 4	
Comments:					
1.3 Residential Neighborhoods					
1.3.1	The Specific Plan accommodates single and multi-family housing, local serving commercial services (e.g., grocery stores, barber and beauty shops, small dining establishments, etc.), community and religious facilities, schools, parks, open spaces, and similar uses within “Residential Neighborhoods.”	X		1 and 3	
Comments:					
1.3.2	<p>The Specific Plan includes priority areas for executive housing as provided for in the SOI General Plan (refer to Figure 3-8, SOI General Plan). Of the target 500 acres of executive housing provided in the General Plan, 20% or 100 acres shall be provided in the areas north of Schaefer Avenue. The following standards must be met in establishing an area large enough to achieve a distinctive identity and critical mass for executive housing (check all that apply):</p> <ul style="list-style-type: none">Development with lots of 10,000 square feet or greater: 80 contiguous acres minimumDevelopment adjacent to a golf course: 50 contiguous acres minimumDevelopments adjacent to a large open space, lake, park, or Village Green: 20 contiguous acres minimum				X
Comments:	The General Plan does not designate areas within West Haven for the above.				

Policy		Fully Complies	Partially Complies	S.P Sec. No.	N/A
1.3.3	The Plan accommodates a mix of land uses and a diversity of housing types and parcel sizes within each “Residential Neighborhood” with each designed to create a unified and distinct character. Each neighborhood may incorporate one or more planning sub areas depicted in Figure 3-7 of the SOI General Plan. Refer to Figures 3-9 and 3-10 for examples on the use of Residential Neighborhoods.	X		1 and 3	
Comments:					
1.3.4	The Plan incorporates a focal point of activity and identity within each “Residential Neighborhood” that consolidates local serving retail and services, public meeting facilities, schools, parks, common areas (for community events, farmers markets, and other celebrations), religious facilities, and other pertinent uses.	X		1 and 3	
Comments:					
1.3.5	The Plan incorporates supporting recreational, educational, retail, cultural, and institutional uses within each “Residential Neighborhood” based on appropriate service standards. <i>To the extent feasible, these uses shall be integrated in “Neighborhood Centers”</i>	X		1 and 3	
Comments:					
1.3.6	The Plan includes provisions to increase residential densities and reduce block sizes adjacent to “Neighborhood Centers” and other key activity centers, as appropriate	X		1 and 3	
Comments:					
1.3.7	The Plan includes provisions for greenways for pedestrians and biking that links housing with parks, “Neighborhood Centers,” amenities, and adjacent neighborhood and activity centers	X		3 and 4	
Comments:					
1.3.8	The Plan establishes clearly defined “edges” and “entries” that contribute to a distinct neighborhood identity (refer to Figures 3-11, 3-12, and 3-13 of the SOI General Plan)	X		3 and 4	
Comments:					

Policy		Fully Complies	Partially Complies	S.P Sec. No.	N/A
1.4 Housing Diversity/Quality					
1.4.1	The Plan accommodates single and multi-family housing, parks, and open spaces in areas designated as “Residential-Low Density” by the SOI General Plan.	X		1 and 3	
Comments:					
1.4.2	The Plan provides for a variety of housing types to serve the needs of residents, including large lot, estate, executive, affordable, live / work housing.	X		1 and 3	
Comments:					
1.4.3	The Plan provides for an overall average density of 4.6 units per gross acre in areas designated as “Residential-Low Density” by the SOI General Plan Land Use Plan, within which a variety of parcel sizes and housing types area allowed. Densities may be varied throughout a planning sub area, as long as the average density is not exceeded.	X		1 and 3	
Comments:					
1.4.4	<p>The Plan provides design standards emphasizing neighborhood livability, and socialization, through such elements as (<i>refer to Figures 3-7, 3-9 and 3-14, SOI General Plan</i>):</p> <ul style="list-style-type: none"> Establishment of a pattern of blocks that promotes access and neighborhood activity, while maintaining safety; use of variable setbacks and parcel sizes to accommodate a diversity of housing unit types and respond to changing market conditions and resident needs; minimizing the width of streets to slow traffic and promote “intimacy,” while maintaining acceptable fire protection and traffic flows; orientation of housing toward the street and reducing the visual and physical dominance of garages (introducing the street frontage as the “outdoor living room”); and use of extensively landscaped parkways, with sidewalks separated from the curb. 	<p>X</p> <p>X</p> <p>X</p> <p>X</p> <p>X</p>		3 and 8	
Comments:					

Policy		Fully Complies	Partially Complies	S.P Sec. No.	N/A
1.4.5	The Plan includes standards to achieve variable residential densities and housing types along a block where appropriate (e.g., single family attached units placed adjacent to duplexes, which could be adjacent to townhomes).	X		3 and 8	
Comments:					
1.4.6	The Plan includes provisions for small clusters of multi-family housing (generally, of a maximum of 2 - 5 acres) within areas designated as “Residential-Low Density” by the SOI General Plan Land Use Plan, that are integrated within the overall pattern of residential development, avoiding large scale, segregated concentrations of high density uses (refer to Figures 3-9 and 3-10 - SOI General Plan)	X		3	
Comments:					
1.4.7	<p>The Plan includes standards for multi-family housing in areas designated as “Residential Low Density” by the SOI General Plan Land Use Plan to convey a high level of visual quality and distinctive low density neighborhood including, but not limited to:</p> <ul style="list-style-type: none"> • modulation of building volumes, masses, and heights and articulation of elevations to convey the sense of individual units or smaller structures (precluding “big stucco boxes”); • orientation of the building elevation and use of clear visual and physical linkages to the primary street frontage; • inclusion of visually well-defined entries that promote individual identity, while maintaining adequate security; • integration of balconies and stairways as distinctive architectural elements, rather than “appendages”; • inclusion of common open space and recreational facilities that are accessible to all residents (with requirements for on-going maintenance of these by residents); • use of landscaped setbacks along primary street frontages that maintains the predominant single family neighborhood character; and • linkage of the development with adjacent sites (avoiding “walled enclaves”). 	X		3, 8, and 9	

Policy		Fully Complies	Partially Complies	S.P Sec. No.	N/A
Comments:					
1.4.8	The proposed Plan includes provisions to avoid the use of walls to separate residential areas from arterial and other high traffic volume streets by the use of expanded landscaped setbacks, frontage roads with landscaped medians, natural drainage swales, and other appropriate techniques (refer to Figure 3-13, SOI General Plan). Where used, walls shall be attractively designed and landscaped and setbacks used to promote a high level of visual quality.	X		3, 8 and 9	
Comments:					
1.4.9	The Plan includes measures addressing all of the use and development restrictions as specified by Referral Areas A, B, and C, and Safety Zones I, II, and III, and of the adopted Chino Airport Comprehensive Land Use Plan. This includes prohibited land uses, interior noise levels, maximum persons per acre, aviation easements, and non-hazardous operations and materials. In addition, a noise impact notification area shall be implemented for all land uses within two miles of the Chino Airport. These measures are consistent with Federal Aviation Administration (FAA) rules, will help protect the long-term operation of the Chino Airport, and will prevent the kind of aircraft noise and other impacts created by flight patterns such as have been experienced by the City around the Ontario International Airport.				X
Comments:	<i>The West Haven Specific Plan is not located in the above Referral Zones, nor Safety Zones.</i>				
1.4.10	The proposed Plan includes provisions for the implementation of a Noise Impact Notification Area (NINA) and a requirement for aviation easements for all schools within two miles of the Chino Airport.				X
Comments:	<i>The West Haven Specific Plan is not within two miles of the Chino Airport</i>				
1.4.11	The Plan includes provisions requiring residential units to be set back from power transmission line easements in accordance with the California Department of Education's limits for locating school sites.				X
Comments:	<i>The City does not require residential units to be set back from power transmission lines in accordance with the California Department of Education's limits for locating schools.</i>				

Policy		Fully Complies	Partially Complies	S.P Sec. No.	N/A
1.5 Neighborhood Centers					
1.5.1	The proposed Plan accommodates local serving commercial (food and beverage sales, small retail shops, personal services, etc.), small restaurants, community/public meeting facilities, libraries, government facilities, cultural facilities, parks, schools (refer to Policy 1.6.1 below), religious facilities, public plazas and performance spaces, and similar uses in areas designated as “Neighborhood Center.”	X		9	
Comments:					
1.5.2	The Plan accommodates multi-family housing and mixed use structures that incorporate housing units above ground level retail shops, offices, or community facilities, in areas designated as “Neighborhood Center” by the SOI General Plan Land Use Plan.				X
Comments:	<i>The West Haven Specific Plan does not incorporate the above. The New Model Colony General Plan does not designate an area within West Haven for Mixed Use.</i>				
Density/Intensity The Plan provides for the following densities/intensities for Neighborhood Centers (Policies 1.5.1 to 1.5.6):					
1.5.3	The Plan includes provisions insuring neighborhood centers contain 50,000 to 100,000 square feet of local serving commercial uses for each 3,500 to 4,000 residential units.	X		9	
Comments:					
1.5.4	The Plan includes provisions for the development of commercial and public uses at intensities that allow for the use of surface parking, generally at a maximum floor area ratio of 0.35:1.	X		9	
Comments:					
1.5.5	The Plan includes provisions for the development of multi-family housing at a maximum overall average density of 12 units per gross acre.	X		1 and 3	
Comments:					

Policy		Fully Complies	Partially Complies	S.P Sec. No.	N/A
1.5.6	The Plan includes provisions for the development of mixed use structures at a maximum floor area ratio of 1.5:1.	X		9	
Comments:					
<i>Design and Development Principles for Neighborhood Centers (policies 1.5.7 to 1.5.13):</i> 1.5.7 Provisions insuring “Neighborhood Centers” are designed and developed as pedestrian oriented “villages” including the following policies: (refer to Figures 3-10 and 3-16 - SOI General Plan) <ul style="list-style-type: none"> • integration of multiple uses into a cohesive place; • use of multiple building volumes, masses, and heights and extensively articulated facades; • siting of buildings around common pedestrian areas, plazas, and public open spaces; • development of public spaces that support casual gatherings, outdoor dining and retail, entertainment, artistic exhibitions and performances, community events, and similar functions; • establishment of a continuous or semi-continuous business frontage along pedestrian spaces and design of ground elevations to be “pedestrian-friendly” (extensive windows, projecting signage, lighting, etc.); • siting of a portion of development along the primary street frontage, with parking partially or fully screened by the buildings; • development of clearly defined walkways from parking areas (paving materials, landscape, signage, etc.); and • design of buildings and sites to complement adjacent low density residential areas. 		X		8 and 9	
Comments:					
1.5.8	The Plan includes provisions insuring integration of public uses, such as community meeting rooms and auditoriums, with commercial uses in the designated “Neighborhood Centers”.				X
Comments:		<i>The City has not indicated that such uses are to be integrated into the Neighborhood Center</i>			

CITY OF ONTARIO NEW MODEL COLONY SPECIFIC PLAN POLICY MATRIX

Policy		Fully Complies	Partially Complies	S.P Sec. No.	N/A
1.5.9	The Plan includes provisions insuring linkages between multi-family residential development (single family attached, townhomes, or apartments) to “Neighborhood Centers”. Include design standards insuring multi-family residential developments complement the “village” character in accordance with Policy 1.4.7.	X		3, 4 and 8	
Comments:					
1.5.10	The Plan includes provisions insuring “Neighborhood Centers” are developed as a low rise environment, 1 to 2 stories, except mixed use structures that may be developed to a maximum height of 3 stories.	X		8 and 9	
Comments:					
1.5.11	The Plan includes provisions to promote the consolidation of school campuses within or linked to “Neighborhood Centers” sharing common facilities such as play fields, gymnasiums, auditoriums, and other facilities, where feasible.				X
Comments:	The elementary school location is not located adjacent to the Neighborhood Center.				
1.5.12	The Plan includes provisions to Integrate public libraries and neighborhood parks with “Neighborhood Centers” and schools.		X	3	
Comments:	The Neighborhood Park is adjacent to the school. The Neighborhood Center is not located adjacent to the Neighborhood Park or School.				
1.5.13	The Plan includes provisions to link “Neighborhood Centers” with adjacent residential areas by the use of greenways, pedestrian walkways, and bicycle paths.	X		3 and 4	
Comments:					
1.6 Schools					

Policy	Fully Complies	Partially Complies	S.P Sec. No.	N/A
<p>1.6.1 The Plan includes provisions to accommodate the development of school administration, classrooms, athletic facilities, and supporting uses in areas designated as “Elementary,” “Middle,” and “High School” in addition to those accommodated in designated “Neighborhood Centers.”</p> <p><i>The number of schools depicted on the SOI General Plan Land Use Plan are based on the use of current (1997) school standards and may vary to reflect changes in these over the SOI’s development period. Locations are conceptualized and may be varied, provided that the intent of the SOI General Plan policies for consolidation with parks, other schools, and community facilities are attained.</i></p>	X		1 and 3	
Comments:				
1.6.2 The Plan provides schools to meet resident needs in accordance with pertinent School District standards.	X		3 and 5	
Comments:				
1.6.3 The Plan meets the policy to distribute schools throughout the Sphere of Influence to promote accessibility from all “Residential Neighborhoods.”	X		3 and 5	
Comments:				
1.6.4 The Plan includes provisions to promote the consolidation of school campuses sharing common facilities such as play fields, gymnasiums, auditoriums, and other facilities, where feasible.	X		3 and 5	
Comments:				
1.6.5 The Plan includes provisions to integrate public schools with other community-serving uses such as parks, libraries, public meeting rooms, day-care, and similar uses (see Figure 3-10 - SOI GPA).	X		3 and 5	
Comments:				
1.6.6 The Plan includes provisions to link the public schools with adjacent housing, parks, and other schools by a pedestrian greenways network (see Figure 3-10 – SOI GPA).	X		4,5 and 8	

Ontario Sphere of Influence Specific Plan Policy Matrix

Following are policies from the Ontario SOI General Plan; they are intended to achieve the “vision” for the Sphere of Influence planning area as outlined in Chapter 2 of the SOI General Plan. The policy matrix is divided into five (5) parts, consisting of the five (5) elements of the SOI General Plan Amendment: I. Community Development; II Infrastructure; III Aesthetic, Cultural, Open Space, and Recreational Resources; IV Natural Resources and V Hazards. The following matrix is intended to determine the adequacy of the proposed Specific Plan in meeting the policies of the SOI General Plan. The checklist shall be completed and submitted with the Specific Plan application. Check if the Specific Plan fully complies or partially complies with each respective policy, or if not applicable. A complete explanation is required in instances whereby the proposed plan does not fully comply with a policy or if not applicable.

Policy		Fully Complies	Partially Complies	S.P Sec. No.	N/A
PART I: COMMUNITY DEVELOPMENT					
1.1 Role of Sphere of Influence General Plan					
1.1.1, 1.1.5	The proposed Specific Plan reflects the types, organization and distribution of land uses depicted on the Sphere of Influence General Plan Land Use Plan (Figure 3-5) and Development Capacity Table (Table 3-3). The Plan incorporates the minimum and does not exceed the maximum amount of development prescribed in Table 3-4 of the SOI General Plan, where applicable, including other uses such as greenways that are specified by the SOI General Plan policies, but not tabulated in Table 3-4	X		1 and 3	
Comments:					
1.1.4	The Proposed Specific Plan encompasses sub area boundaries designated on Figure 3-6 of the Sphere of Influence General Plan and sufficient land to constitute a significant portion of a distinct and cohesive neighborhood or district, as depicted on Figure 3-7 of the Sphere of Influence General Plan.	X		1 and 3	
Comments:					

Policy		Fully Complies	Partially Complies	S.P Sec. No.	N/A
<p>Sub area boundaries may be modified on the basis of the following conditions (check all that apply if sub area boundaries are not entirely reflected by proposed Specific Plan):</p> <p><i>Note adjustments to sub area boundaries shall be accompanied by an equivalent adjustment of the development capacity, maintaining the overall coverage densities depicted on the SOI General Plan Land Use Plan.</i></p> <ul style="list-style-type: none">to achieve unified districts and neighborhoods;to account for defined market demands regarding the types and scale/acreage of development that should be accommodated;to reflect the location of major roads, utility corridors and easements, flood control improvements, natural resource areas, and public properties;to reflect property subdivisions and ownerships; andto consider appropriate infrastructure and public service phasing.		X X X X	1 1 1 1		X
Comments:	The West Haven boundary was not due to a reflection of the above item.				
1.2 Structure and Organization of Land Use:					
1.2.1	The proposed Plan provides for integrated development of distinct residential neighborhoods and major regional serving activity centers and corridors that are differentiated by their functional role, uses, and character. Each is conceived as a uniquely identifiable place, rather than a fragment of a continuous/undifferentiated urban area.	X		1 and 3	
Comments:					
1.2.2	The Plan provides for a balance of land uses within each neighborhood and district in accordance with phasing policies of the SOI General Plan.	X		1 and 3	
Comments:					
1.2.3	The Plan links neighborhoods, centers, and corridors by transportation, utility, and greenways/open space networks. These may also be used to establish clear boundaries between distinct neighborhoods and/or centers.	X		1, 3, and 4	

CITY OF ONTARIO NEW MODEL COLONY SPECIFIC PLAN POLICY MATRIX

Policy		Fully Complies	Partially Complies	S.P Sec. No.	N/A
Comments:					
1.2.4	The Plan includes major amenities that provide identity and enhances character including a large scale park (“Village Green”), lake / streams, and golf courses.				X
Comments:	<i>The General Plan does not designate an area within the West Haven Specific Plan for a Village Green, lake/streams, or golf course.</i>				
1.2.5	The Plan includes an educational campus as the “centerpiece” of community identity and organization.				X
Comments:	<i>The General Plan does not designate an area within the West Haven Specific Plan for an educational campus..</i>				
1.2.6	<p>The Plan includes elements that provide linkages and continuity with uses abutting the Sphere of Influence, including:</p> <ul style="list-style-type: none"> continuity and linkage of transportation and utility infrastructure continuity of street trees and landscaped median along Euclid Avenue Pedestrian linkages to residential areas north of Riverside Drive continuity of commercial centers at the Riverside Drive/ Euclid Avenue and Riverside Drive/Milliken Avenue intersections; and relationship to existing and planned land uses on the west side of Euclid Avenue (City of Chino), north side of Riverside Drive (City of Ontario), and east side of Milliken Avenue (Riverside County)--by the use of complementary and/or transitional land uses and densities and streetscape improvements. 	X		3 and 4	X
		X		3 and 4	
		X		3 and 4	X
		X		3 and 4	
Comments:	<i>The West haven Specific Plan does not include Euclid Avenue or Milliken Avenue</i>				
1.2.7	The Specific Plan establishes clearly defined “edges” for the Sphere of Influence, including landscape setbacks, transitional densities, and other suitable techniques that avoid the use of walls and creation of “walled” enclave.	X		3 and 4	
Comments:					

Policy		Fully Complies	Partially Complies	S.P Sec. No.	N/A
1.2.8	The Specific Plan includes measures to minimize potential impacts of environmental hazards including flooding, and noise. The Plan provides for the use of electrical, transmission corridors, flood channels, and similar elements to form “edges” for residential neighborhoods and centers and/ or accommodates public greenways / corridors.	X		3 and 4	
Comments:					
1.3 Residential Neighborhoods					
1.3.1	The Specific Plan accommodates single and multi-family housing, local serving commercial services (e.g., grocery stores, barber and beauty shops, small dining establishments, etc.), community and religious facilities, schools, parks, open spaces, and similar uses within “Residential Neighborhoods.”	X		1 and 3	
Comments:					
1.3.2	<p>The Specific Plan includes priority areas for executive housing as provided for in the SOI General Plan (refer to Figure 3-8, SOI General Plan). Of the target 500 acres of executive housing provided in the General Plan, 20% or 100 acres shall be provided in the areas north of Schaefer Avenue. The following standards must be met in establishing an area large enough to achieve a distinctive identity and critical mass for executive housing (check all that apply):</p> <ul style="list-style-type: none">Development with lots of 10,000 square feet or greater: 80 contiguous acres minimumDevelopment adjacent to a golf course: 50 contiguous acres minimumDevelopments adjacent to a large open space, lake, park, or Village Green: 20 contiguous acres minimum				X
Comments:	The General Plan does not designate areas within West Haven for the above.				

Policy		Fully Complies	Partially Complies	S.P Sec. No.	N/A
1.3.3	The Plan accommodates a mix of land uses and a diversity of housing types and parcel sizes within each “Residential Neighborhood” with each designed to create a unified and distinct character. Each neighborhood may incorporate one or more planning sub areas depicted in Figure 3-7 of the SOI General Plan. Refer to Figures 3-9 and 3-10 for examples on the use of Residential Neighborhoods.	X		1 and 3	
Comments:					
1.3.4	The Plan incorporates a focal point of activity and identity within each “Residential Neighborhood” that consolidates local serving retail and services, public meeting facilities, schools, parks, common areas (for community events, farmers markets, and other celebrations), religious facilities, and other pertinent uses.	X		1 and 3	
Comments:					
1.3.5	The Plan incorporates supporting recreational, educational, retail, cultural, and institutional uses within each “Residential Neighborhood” based on appropriate service standards. <i>To the extent feasible, these uses shall be integrated in “Neighborhood Centers”</i>	X		1 and 3	
Comments:					
1.3.6	The Plan includes provisions to increase residential densities and reduce block sizes adjacent to “Neighborhood Centers” and other key activity centers, as appropriate	X		1 and 3	
Comments:					
1.3.7	The Plan includes provisions for greenways for pedestrians and biking that links housing with parks, “Neighborhood Centers,” amenities, and adjacent neighborhood and activity centers	X		3 and 4	
Comments:					
1.3.8	The Plan establishes clearly defined “edges” and “entries” that contribute to a distinct neighborhood identity (refer to Figures 3-11, 3-12, and 3-13 of the SOI General Plan)	X		3 and 4	
Comments:					

Policy		Fully Complies	Partially Complies	S.P Sec. No.	N/A
1.4 Housing Diversity/Quality					
1.4.1	The Plan accommodates single and multi-family housing, parks, and open spaces in areas designated as “Residential-Low Density” by the SOI General Plan.	X		1 and 3	
Comments:					
1.4.2	The Plan provides for a variety of housing types to serve the needs of residents, including large lot, estate, executive, affordable, live / work housing.	X		1 and 3	
Comments:					
1.4.3	The Plan provides for an overall average density of 4.6 units per gross acre in areas designated as “Residential-Low Density” by the SOI General Plan Land Use Plan, within which a variety of parcel sizes and housing types area allowed. Densities may be varied throughout a planning sub area, as long as the average density is not exceeded.	X		1 and 3	
Comments:					
1.4.4	<p>The Plan provides design standards emphasizing neighborhood livability, and socialization, through such elements as (<i>refer to Figures 3-7, 3-9 and 3-14, SOI General Plan</i>):</p> <ul style="list-style-type: none"> Establishment of a pattern of blocks that promotes access and neighborhood activity, while maintaining safety; use of variable setbacks and parcel sizes to accommodate a diversity of housing unit types and respond to changing market conditions and resident needs; minimizing the width of streets to slow traffic and promote “intimacy,” while maintaining acceptable fire protection and traffic flows; orientation of housing toward the street and reducing the visual and physical dominance of garages (introducing the street frontage as the “outdoor living room”); and use of extensively landscaped parkways, with sidewalks separated from the curb. 	<p>X</p> <p>X</p> <p>X</p> <p>X</p> <p>X</p>		3 and 8	
Comments:					

Policy		Fully Complies	Partially Complies	S.P Sec. No.	N/A
1.4.5	The Plan includes standards to achieve variable residential densities and housing types along a block where appropriate (e.g., single family attached units placed adjacent to duplexes, which could be adjacent to townhomes).	X		3 and 8	
Comments:					
1.4.6	The Plan includes provisions for small clusters of multi-family housing (generally, of a maximum of 2 - 5 acres) within areas designated as “Residential-Low Density” by the SOI General Plan Land Use Plan, that are integrated within the overall pattern of residential development, avoiding large scale, segregated concentrations of high density uses (refer to Figures 3-9 and 3-10 - SOI General Plan)	X		3	
Comments:					
1.4.7	<p>The Plan includes standards for multi-family housing in areas designated as “Residential Low Density” by the SOI General Plan Land Use Plan to convey a high level of visual quality and distinctive low density neighborhood including, but not limited to:</p> <ul style="list-style-type: none"> • modulation of building volumes, masses, and heights and articulation of elevations to convey the sense of individual units or smaller structures (precluding “big stucco boxes”); • orientation of the building elevation and use of clear visual and physical linkages to the primary street frontage; • inclusion of visually well-defined entries that promote individual identity, while maintaining adequate security; • integration of balconies and stairways as distinctive architectural elements, rather than “appendages”; • inclusion of common open space and recreational facilities that are accessible to all residents (with requirements for on-going maintenance of these by residents); • use of landscaped setbacks along primary street frontages that maintains the predominant single family neighborhood character; and • linkage of the development with adjacent sites (avoiding “walled enclaves”). 	X		3, 8, and 9	

Policy		Fully Complies	Partially Complies	S.P Sec. No.	N/A
Comments:					
1.4.8	The proposed Plan includes provisions to avoid the use of walls to separate residential areas from arterial and other high traffic volume streets by the use of expanded landscaped setbacks, frontage roads with landscaped medians, natural drainage swales, and other appropriate techniques (refer to Figure 3-13, SOI General Plan). Where used, walls shall be attractively designed and landscaped and setbacks used to promote a high level of visual quality.	X		3, 8 and 9	
Comments:					
1.4.9	The Plan includes measures addressing all of the use and development restrictions as specified by Referral Areas A, B, and C, and Safety Zones I, II, and III, and of the adopted Chino Airport Comprehensive Land Use Plan. This includes prohibited land uses, interior noise levels, maximum persons per acre, aviation easements, and non-hazardous operations and materials. In addition, a noise impact notification area shall be implemented for all land uses within two miles of the Chino Airport. These measures are consistent with Federal Aviation Administration (FAA) rules, will help protect the long-term operation of the Chino Airport, and will prevent the kind of aircraft noise and other impacts created by flight patterns such as have been experienced by the City around the Ontario International Airport.				X
Comments:	<i>The West Haven Specific Plan is not located in the above Referral Zones, nor Safety Zones.</i>				
1.4.10	The proposed Plan includes provisions for the implementation of a Noise Impact Notification Area (NINA) and a requirement for aviation easements for all schools within two miles of the Chino Airport.				X
Comments:	<i>The West Haven Specific Plan is not within two miles of the Chino Airport</i>				
1.4.11	The Plan includes provisions requiring residential units to be set back from power transmission line easements in accordance with the California Department of Education's limits for locating school sites.				X
Comments:	<i>The City does not require residential units to be set back from power transmission lines in accordance with the California Department of Education's limits for locating schools.</i>				

Ontario Sphere of Influence Specific Plan Policy Matrix

Following are policies from the Ontario SOI General Plan; they are intended to achieve the “vision” for the Sphere of Influence planning area as outlined in Chapter 2 of the SOI General Plan. The policy matrix is divided into five (5) parts, consisting of the five (5) elements of the SOI General Plan Amendment: I. Community Development; II Infrastructure; III Aesthetic, Cultural, Open Space, and Recreational Resources; IV Natural Resources and V Hazards. The following matrix is intended to determine the adequacy of the proposed Specific Plan in meeting the policies of the SOI General Plan. The checklist shall be completed and submitted with the Specific Plan application. Check if the Specific Plan fully complies or partially complies with each respective policy, or if not applicable. A complete explanation is required in instances whereby the proposed plan does not fully comply with a policy or if not applicable.

Policy	Fully Complies	Partially Complies	S.P Sec. No.	N/A
PART I: COMMUNITY DEVELOPMENT				
1.1 Role of Sphere of Influence General Plan				
1.1.1, 1.1.5 The proposed Specific Plan reflects the types, organization and distribution of land uses depicted on the Sphere of Influence General Plan Land Use Plan (Figure 3-5) and Development Capacity Table (Table 3-3). The Plan incorporates the minimum and does not exceed the maximum amount of development prescribed in Table 3-4 of the SOI General Plan, where applicable, including other uses such as greenways that are specified by the SOI General Plan policies, but not tabulated in Table 3-4	X		1 and 3	
Comments:				
1.1.4 The Proposed Specific Plan encompasses sub area boundaries designated on Figure 3-6 of the Sphere of Influence General Plan and sufficient land to constitute a significant portion of a distinct and cohesive neighborhood or district, as depicted on Figure 3-7 of the Sphere of Influence General Plan.	X		1 and 3	
Comments:				

Policy		Fully Complies	Partially Complies	S.P Sec. No.	N/A
<p>Sub area boundaries may be modified on the basis of the following conditions (check all that apply if sub area boundaries are not entirely reflected by proposed Specific Plan):</p> <p><i>Note adjustments to sub area boundaries shall be accompanied by an equivalent adjustment of the development capacity, maintaining the overall coverage densities depicted on the SOI General Plan Land Use Plan.</i></p> <ul style="list-style-type: none"> to achieve unified districts and neighborhoods; to account for defined market demands regarding the types and scale/acreage of development that should be accommodated; to reflect the location of major roads, utility corridors and easements, flood control improvements, natural resource areas, and public properties; to reflect property subdivisions and ownerships; and to consider appropriate infrastructure and public service phasing. 		<div>X</div> <div>X</div> <div>X</div> <div>X</div>	<div>1</div> <div>1</div> <div>1</div> <div>1</div>		X
Comments:	The West Haven boundary was not due to a reflection of the above item.				
1.2 Structure and Organization of Land Use:					
1.2.1	The proposed Plan provides for integrated development of distinct residential neighborhoods and major regional serving activity centers and corridors that are differentiated by their functional role, uses, and character. Each is conceived as a uniquely identifiable place, rather than a fragment of a continuous/undifferentiated urban area.	X		1 and 3	
Comments:					
1.2.2	The Plan provides for a balance of land uses within each neighborhood and district in accordance with phasing policies of the SOI General Plan.	X		1 and 3	
Comments:					
1.2.3	The Plan links neighborhoods, centers, and corridors by transportation, utility, and greenways/open space networks. These may also be used to establish clear boundaries between distinct neighborhoods and/or centers.	X		1, 3, and 4	

CITY OF ONTARIO NEW MODEL COLONY SPECIFIC PLAN POLICY MATRIX

Policy		Fully Complies	Partially Complies	S.P Sec. No.	N/A
Comments:					
1.2.4	The Plan includes major amenities that provide identity and enhances character including a large scale park (“Village Green”), lake / streams, and golf courses.				X
Comments:	<i>The General Plan does not designate an area within the West Haven Specific Plan for a Village Green, lake/streams, or golf course.</i>				
1.2.5	The Plan includes an educational campus as the “centerpiece” of community identity and organization.				X
Comments:	<i>The General Plan does not designate an area within the West Haven Specific Plan for an educational campus..</i>				
1.2.6	<p>The Plan includes elements that provide linkages and continuity with uses abutting the Sphere of Influence, including:</p> <ul style="list-style-type: none"> continuity and linkage of transportation and utility infrastructure continuity of street trees and landscaped median along Euclid Avenue Pedestrian linkages to residential areas north of Riverside Drive continuity of commercial centers at the Riverside Drive/ Euclid Avenue and Riverside Drive/Milliken Avenue intersections; and relationship to existing and planned land uses on the west side of Euclid Avenue (City of Chino), north side of Riverside Drive (City of Ontario), and east side of Milliken Avenue (Riverside County)--by the use of complementary and/or transitional land uses and densities and streetscape improvements. 	X		3 and 4	X
		X		3 and 4	
		X		3 and 4	X
		X		3 and 4	
Comments:	<i>The West haven Specific Plan does not include Euclid Avenue or Milliken Avenue</i>				
1.2.7	The Specific Plan establishes clearly defined “edges” for the Sphere of Influence, including landscape setbacks, transitional densities, and other suitable techniques that avoid the use of walls and creation of “walled” enclave.	X		3 and 4	
Comments:					

Policy		Fully Complies	Partially Complies	S.P Sec. No.	N/A
1.2.8	The Specific Plan includes measures to minimize potential impacts of environmental hazards including flooding, and noise. The Plan provides for the use of electrical, transmission corridors, flood channels, and similar elements to form “edges” for residential neighborhoods and centers and/ or accommodates public greenways / corridors.	X		3 and 4	
Comments:					
1.3 Residential Neighborhoods					
1.3.1	The Specific Plan accommodates single and multi-family housing, local serving commercial services (e.g., grocery stores, barber and beauty shops, small dining establishments, etc.), community and religious facilities, schools, parks, open spaces, and similar uses within “Residential Neighborhoods.”	X		1 and 3	
Comments:					
1.3.2	<p>The Specific Plan includes priority areas for executive housing as provided for in the SOI General Plan (refer to Figure 3-8, SOI General Plan). Of the target 500 acres of executive housing provided in the General Plan, 20% or 100 acres shall be provided in the areas north of Schaefer Avenue. The following standards must be met in establishing an area large enough to achieve a distinctive identity and critical mass for executive housing (check all that apply):</p> <ul style="list-style-type: none">Development with lots of 10,000 square feet or greater: 80 contiguous acres minimumDevelopment adjacent to a golf course: 50 contiguous acres minimumDevelopments adjacent to a large open space, lake, park, or Village Green: 20 contiguous acres minimum				X
Comments:	The General Plan does not designate areas within West Haven for the above.				

Policy	Fully Complies	Partially Complies	S.P Sec. No.	N/A
1.3.3 The Plan accommodates a mix of land uses and a diversity of housing types and parcel sizes within each “Residential Neighborhood” with each designed to create a unified and distinct character. Each neighborhood may incorporate one or more planning sub areas depicted in Figure 3-7 of the SOI General Plan. Refer to Figures 3-9 and 3-10 for examples on the use of Residential Neighborhoods.	X		1 and 3	
Comments:				
1.3.4 The Plan incorporates a focal point of activity and identity within each “Residential Neighborhood” that consolidates local serving retail and services, public meeting facilities, schools, parks, common areas (for community events, farmers markets, and other celebrations), religious facilities, and other pertinent uses.	X		1 and 3	
Comments:				
1.3.5 The Plan incorporates supporting recreational, educational, retail, cultural, and institutional uses within each “Residential Neighborhood” based on appropriate service standards. <i>To the extent feasible, these uses shall be integrated in “Neighborhood Centers”</i>	X		1 and 3	
Comments:				
1.3.6 The Plan includes provisions to increase residential densities and reduce block sizes adjacent to “Neighborhood Centers” and other key activity centers, as appropriate	X		1 and 3	
Comments:				
1.3.7 The Plan includes provisions for greenways for pedestrians and biking that links housing with parks, “Neighborhood Centers,” amenities, and adjacent neighborhood and activity centers	X		3 and 4	
Comments:				
1.3.8 The Plan establishes clearly defined “edges” and “entries” that contribute to a distinct neighborhood identity (refer to Figures 3-11, 3-12, and 3-13 of the SOI General Plan)	X		3 and 4	
Comments:				

Policy		Fully Complies	Partially Complies	S.P Sec. No.	N/A
1.4 Housing Diversity/Quality					
1.4.1	The Plan accommodates single and multi-family housing, parks, and open spaces in areas designated as “Residential-Low Density” by the SOI General Plan.	X		1 and 3	
Comments:					
1.4.2	The Plan provides for a variety of housing types to serve the needs of residents, including large lot, estate, executive, affordable, live / work housing.	X		1 and 3	
Comments:					
1.4.3	The Plan provides for an overall average density of 4.6 units per gross acre in areas designated as “Residential-Low Density” by the SOI General Plan Land Use Plan, within which a variety of parcel sizes and housing types area allowed. Densities may be varied throughout a planning sub area, as long as the average density is not exceeded.	X		1 and 3	
Comments:					
1.4.4	<p>The Plan provides design standards emphasizing neighborhood livability, and socialization, through such elements as (<i>refer to Figures 3-7, 3-9 and 3-14, SOI General Plan</i>):</p> <ul style="list-style-type: none"> Establishment of a pattern of blocks that promotes access and neighborhood activity, while maintaining safety; use of variable setbacks and parcel sizes to accommodate a diversity of housing unit types and respond to changing market conditions and resident needs; minimizing the width of streets to slow traffic and promote “intimacy,” while maintaining acceptable fire protection and traffic flows; orientation of housing toward the street and reducing the visual and physical dominance of garages (introducing the street frontage as the “outdoor living room”); and use of extensively landscaped parkways, with sidewalks separated from the curb. 	<p>X</p> <p>X</p> <p>X</p> <p>X</p> <p>X</p>		3 and 8	
Comments:					

Policy		Fully Complies	Partially Complies	S.P Sec. No.	N/A
1.4.5	The Plan includes standards to achieve variable residential densities and housing types along a block where appropriate (e.g., single family attached units placed adjacent to duplexes, which could be adjacent to townhomes).	X		3 and 8	
Comments:					
1.4.6	The Plan includes provisions for small clusters of multi-family housing (generally, of a maximum of 2 - 5 acres) within areas designated as “Residential-Low Density” by the SOI General Plan Land Use Plan, that are integrated within the overall pattern of residential development, avoiding large scale, segregated concentrations of high density uses (refer to Figures 3-9 and 3-10 - SOI General Plan)	X		3	
Comments:					
1.4.7	<p>The Plan includes standards for multi-family housing in areas designated as “Residential Low Density” by the SOI General Plan Land Use Plan to convey a high level of visual quality and distinctive low density neighborhood including, but not limited to:</p> <ul style="list-style-type: none"> • modulation of building volumes, masses, and heights and articulation of elevations to convey the sense of individual units or smaller structures (precluding “big stucco boxes”); • orientation of the building elevation and use of clear visual and physical linkages to the primary street frontage; • inclusion of visually well-defined entries that promote individual identity, while maintaining adequate security; • integration of balconies and stairways as distinctive architectural elements, rather than “appendages”; • inclusion of common open space and recreational facilities that are accessible to all residents (with requirements for on-going maintenance of these by residents); • use of landscaped setbacks along primary street frontages that maintains the predominant single family neighborhood character; and • linkage of the development with adjacent sites (avoiding “walled enclaves”). 	X		3, 8, and 9	

Policy		Fully Complies	Partially Complies	S.P Sec. No.	N/A
Comments:					
1.4.8	The proposed Plan includes provisions to avoid the use of walls to separate residential areas from arterial and other high traffic volume streets by the use of expanded landscaped setbacks, frontage roads with landscaped medians, natural drainage swales, and other appropriate techniques (refer to Figure 3-13, SOI General Plan). Where used, walls shall be attractively designed and landscaped and setbacks used to promote a high level of visual quality.	X		3, 8 and 9	
Comments:					
1.4.9	The Plan includes measures addressing all of the use and development restrictions as specified by Referral Areas A, B, and C, and Safety Zones I, II, and III, and of the adopted Chino Airport Comprehensive Land Use Plan. This includes prohibited land uses, interior noise levels, maximum persons per acre, aviation easements, and non-hazardous operations and materials. In addition, a noise impact notification area shall be implemented for all land uses within two miles of the Chino Airport. These measures are consistent with Federal Aviation Administration (FAA) rules, will help protect the long-term operation of the Chino Airport, and will prevent the kind of aircraft noise and other impacts created by flight patterns such as have been experienced by the City around the Ontario International Airport.				X
Comments:	<i>The West Haven Specific Plan is not located in the above Referral Zones, nor Safety Zones.</i>				
1.4.10	The proposed Plan includes provisions for the implementation of a Noise Impact Notification Area (NINA) and a requirement for aviation easements for all schools within two miles of the Chino Airport.				X
Comments:	<i>The West Haven Specific Plan is not within two miles of the Chino Airport</i>				
1.4.11	The Plan includes provisions requiring residential units to be set back from power transmission line easements in accordance with the California Department of Education's limits for locating school sites.				X
Comments:	<i>The City does not require residential units to be set back from power transmission lines in accordance with the California Department of Education's limits for locating schools.</i>				

Policy		Fully Complies	Partially Complies	S.P Sec. No.	N/A
1.5 Neighborhood Centers					
1.5.1	The proposed Plan accommodates local serving commercial (food and beverage sales, small retail shops, personal services, etc.), small restaurants, community/public meeting facilities, libraries, government facilities, cultural facilities, parks, schools (refer to Policy 1.6.1 below), religious facilities, public plazas and performance spaces, and similar uses in areas designated as “Neighborhood Center.”	X		9	
Comments:					
1.5.2	The Plan accommodates multi-family housing and mixed use structures that incorporate housing units above ground level retail shops, offices, or community facilities, in areas designated as “Neighborhood Center” by the SOI General Plan Land Use Plan.				X
Comments:	<i>The West Haven Specific Plan does not incorporate the above. The New Model Colony General Plan does not designate an area within West Haven for Mixed Use.</i>				
Density/Intensity The Plan provides for the following densities/intensities for Neighborhood Centers (Policies 1.5.1 to 1.5.6):					
1.5.3	The Plan includes provisions insuring neighborhood centers contain 50,000 to 100,000 square feet of local serving commercial uses for each 3,500 to 4,000 residential units.	X		9	
Comments:					
1.5.4	The Plan includes provisions for the development of commercial and public uses at intensities that allow for the use of surface parking, generally at a maximum floor area ratio of 0.35:1.	X		9	
Comments:					
1.5.5	The Plan includes provisions for the development of multi-family housing at a maximum overall average density of 12 units per gross acre.	X		1 and 3	
Comments:					

Policy		Fully Complies	Partially Complies	S.P Sec. No.	N/A
1.5 Neighborhood Centers					
1.5.1	The proposed Plan accommodates local serving commercial (food and beverage sales, small retail shops, personal services, etc.), small restaurants, community/public meeting facilities, libraries, government facilities, cultural facilities, parks, schools (refer to Policy 1.6.1 below), religious facilities, public plazas and performance spaces, and similar uses in areas designated as “Neighborhood Center.”	X		9	
Comments:					
1.5.2	The Plan accommodates multi-family housing and mixed use structures that incorporate housing units above ground level retail shops, offices, or community facilities, in areas designated as “Neighborhood Center” by the SOI General Plan Land Use Plan.				X
Comments:	<i>The West Haven Specific Plan does not incorporate the above. The New Model Colony General Plan does not designate an area within West Haven for Mixed Use.</i>				
Density/Intensity The Plan provides for the following densities/intensities for Neighborhood Centers (Policies 1.5.1 to 1.5.6):					
1.5.3	The Plan includes provisions insuring neighborhood centers contain 50,000 to 100,000 square feet of local serving commercial uses for each 3,500 to 4,000 residential units.	X		9	
Comments:					
1.5.4	The Plan includes provisions for the development of commercial and public uses at intensities that allow for the use of surface parking, generally at a maximum floor area ratio of 0.35:1.	X		9	
Comments:					
1.5.5	The Plan includes provisions for the development of multi-family housing at a maximum overall average density of 12 units per gross acre.	X		1 and 3	
Comments:					

Policy		Fully Complies	Partially Complies	S.P Sec. No.	N/A
1.5.6	The Plan includes provisions for the development of mixed use structures at a maximum floor area ratio of 1.5:1.	X		9	
Comments:					
<i>Design and Development Principles for Neighborhood Centers (policies 1.5.7 to 1.5.13):</i>		X		8 and 9	
1.5.7	Provisions insuring “Neighborhood Centers” are designed and developed as pedestrian oriented “villages” including the following policies: (refer to Figures 3-10 and 3-16 - SOI General Plan) <ul style="list-style-type: none">integration of multiple uses into a cohesive place;use of multiple building volumes, masses, and heights and extensively articulated facades;siting of buildings around common pedestrian areas, plazas, and public open spaces;development of public spaces that support casual gatherings, outdoor dining and retail, entertainment, artistic exhibitions and performances, community events, and similar functions;establishment of a continuous or semi-continuous business frontage along pedestrian spaces and design of ground elevations to be “pedestrian-friendly” (extensive windows, projecting signage, lighting, etc.);siting of a portion of development along the primary street frontage, with parking partially or fully screened by the buildings;development of clearly defined walkways from parking areas (paving materials, landscape, signage, etc.); anddesign of buildings and sites to complement adjacent low density residential areas.				
Comments:					
1.5.8	The Plan includes provisions insuring integration of public uses, such as community meeting rooms and auditoriums, with commercial uses in the designated “Neighborhood Centers”.				X
Comments:	The City has not indicated that such uses are to be integrated into the Neighborhood Center				

CITY OF ONTARIO NEW MODEL COLONY SPECIFIC PLAN POLICY MATRIX

Policy		Fully Complies	Partially Complies	S.P Sec. No.	N/A
1.5.9	The Plan includes provisions insuring linkages between multi-family residential development (single family attached, townhomes, or apartments) to “Neighborhood Centers”. Include design standards insuring multi-family residential developments complement the “village” character in accordance with Policy 1.4.7.	X		3, 4 and 8	
Comments:					
1.5.10	The Plan includes provisions insuring “Neighborhood Centers” are developed as a low rise environment, 1 to 2 stories, except mixed use structures that may be developed to a maximum height of 3 stories.	X		8 and 9	
Comments:					
1.5.11	The Plan includes provisions to promote the consolidation of school campuses within or linked to “Neighborhood Centers” sharing common facilities such as play fields, gymnasiums, auditoriums, and other facilities, where feasible.				X
Comments:	<i>The elementary school location is not located adjacent to the Neighborhood Center.</i>				
1.5.12	The Plan includes provisions to Integrate public libraries and neighborhood parks with “Neighborhood Centers” and schools.		X	3	
Comments:	<i>The Neighborhood Park is adjacent to the school. The Neighborhood Center is not located adjacent to the Neighborhood Park or School.</i>				
1.5.13	The Plan includes provisions to link “Neighborhood Centers” with adjacent residential areas by the use of greenways, pedestrian walkways, and bicycle paths.	X		3 and 4	
Comments:					
1.6	Schools				

Policy	Fully Complies	Partially Complies	S.P Sec. No.	N/A
<p>1.6.1 The Plan includes provisions to accommodate the development of school administration, classrooms, athletic facilities, and supporting uses in areas designated as “Elementary,” “Middle,” and “High School” in addition to those accommodated in designated “Neighborhood Centers.”</p> <p><i>The number of schools depicted on the SOI General Plan Land Use Plan are based on the use of current (1997) school standards and may vary to reflect changes in these over the SOI’s development period. Locations are conceptualized and may be varied, provided that the intent of the SOI General Plan policies for consolidation with parks, other schools, and community facilities are attained.</i></p>	X		1 and 3	
Comments:				
1.6.2 The Plan provides schools to meet resident needs in accordance with pertinent School District standards.	X		3 and 5	
Comments:				
1.6.3 The Plan meets the policy to distribute schools throughout the Sphere of Influence to promote accessibility from all “Residential Neighborhoods.”	X		3 and 5	
Comments:				
1.6.4 The Plan includes provisions to promote the consolidation of school campuses sharing common facilities such as play fields, gymnasiums, auditoriums, and other facilities, where feasible.	X		3 and 5	
Comments:				
1.6.5 The Plan includes provisions to integrate public schools with other community-serving uses such as parks, libraries, public meeting rooms, day-care, and similar uses (see Figure 3-10 - SOI GPA).	X		3 and 5	
Comments:				
1.6.6 The Plan includes provisions to link the public schools with adjacent housing, parks, and other schools by a pedestrian greenways network (see Figure 3-10 – SOI GPA).	X		4,5 and 8	

Policy		Fully Complies	Partially Complies	S.P Sec. No.	N/A
Comments:					
1.6.7	The Plan includes provisions requiring educational facilities to be set back from power transmission line easements in accordance with the California Department of Education's limits for locating school sites.	X		3	
1.7	<i>Multi-Family Residential Corridors and Centers</i>				
1.7.1	The Plan accommodates multi-family residential units (small lot detached, single family attached, townhomes, and apartments) in areas designated as "Residential-Medium Density" and "Residential-High Density" by the SOI General Plan Land Use Plan.	X		1 and 3	
Comments:					
1.7.2	The Plan requires the inclusion of sufficient on-site recreational amenities in higher density developments to meet resident needs.	X		3, 8 and 9	
Comments:					
1.7.3	The Plan encourages the inclusion of community-oriented uses such as public meeting rooms, plazas/courtyards, day-care facilities, and similar uses. These may be developed as single purpose buildings or incorporated with residential uses.	X		9	
Comments:					
1.7.4	The Plan accommodates an overall average density of <u>12</u> units per gross acre in areas designated as "Residential Medium Density" and <u>18</u> units per gross acre in areas designated as "Residential-High Density" by the SOI General Plan, within which a variety of parcel sizes and housing types would be allowed. Densities may be varied throughout a planning sub area, as long as the average density is not exceeded.	X		1 and 3	
Comments:					

Policy		Fully Complies	Partially Complies	S.P Sec. No.	N/A
1.7.5	The Plan includes provisions to establish visual and physical linkages among individually developed multi-family sites to create a cohesive and continuous corridor, rather than independent “islands.” This may be achieved through the fronting of buildings adjacent or in immediate proximity to the street, use of a consistent landscaped setback incorporating common street trees or other vegetation, minimization of side property setbacks to achieve building continuity (a common “building wall”) along the street frontage, location of all parking to the rear of street-facing buildings, use of interconnecting pedestrian walkways, and similar techniques (see Figure 3-17 in the SOI GPA).	X		3,8 and 9	
Comments:					
1.7.6	The Plan includes standards and guidelines to promote visual interest in the design of building elevations in accordance with Policy 1.4.7 (except for the use of extensive landscaped setbacks).	X		8	
Comments:					
1.7.7	The Plan includes provisions to link community serving facilities in multi-family corridors with adjacent residential neighborhoods.	X		3 and 8	
Comments:					
1.7.8	The Plan includes provisions insuring sidewalks are developed in multi-family corridors as per City Standards to facilitate and be attractive for pedestrian activity.	X		3,4 and 8	
Comments:					
1.7.9	The Plan includes provisions requiring residential units be set back from power transmission line easements in accordance with the California Department of Education’s limits for locating school sites.				X
Comments:	The City does not have a requirement that units be setback from power transmission line easements in accordance with the above.				
1.8 Town Center					

CITY OF ONTARIO NEW MODEL COLONY SPECIFIC PLAN POLICY MATRIX

Policy		Fully Complies	Partially Complies	S.P Sec. No.	N/A
1.8.1	The Plan includes provisions for the development of retail, commercial, professional offices, entertainment, art galleries, dining establishments, hotels, and similar uses in areas designated as “Town Center” by the SOI General Plan Land Use Plan.				X
Comments:	<i>The General Plan does not designate the West Haven Specific Plan for a Town Center.</i>				
1.8.2	The Plan includes provisions requiring integration of multi-family housing (townhomes and apartments) with retail, office, and other uses within the Town Center.				X
Comments:	<i>The General Plan does not designate the West Haven Specific Plan for a Town Center.</i>				
1.8.3	The Plan includes provisions for mixed-use buildings that integrate housing with retail commercial, office, and similar uses and special housing types (e.g., artist live/work facilities and home occupations) within the Town Center.				X
Comments:	<i>The General Plan does not designate the West Haven Specific Plan for a Town Center.</i>				
1.8.4	The Plan includes provisions for government office, cultural uses (libraries, museums, performance venues, etc.), religious facilities, schools, recreational facilities, multi-modal transportation hub, and similar public and quasi-public uses, within the Town Center area.				X
Comments:	<i>The General Plan does not designate the West Haven Specific Plan for a Town Center.</i>				
1.8.5	The Plan includes provisions for community meeting rooms, day-care facilities, and public and private plazas, courtyards, and open spaces within the Town Center area.				X
Comments:	<i>The General Plan does not designate the West Haven Specific Plan for a Town Center.</i>				
1.8.6	The Plan accommodates development within the Town Center at building heights, generally, of 1 to 3 stories and a maximum floor area ratio of 0.5, except for mixed use structures that integrate housing with retail, office, public, and other uses that may be developed up to four stories and a floor area ratio of 2.0:1.				X
Comments:	<i>The General Plan does not designate the West Haven Specific Plan for a Town Center.</i>				

Policy		Fully Complies	Partially Complies	S.P Sec. No.	N/A
1.8.7	The Plan accommodates free-standing residential uses at a maximum overall average density of 18 units per gross acre.	X		3	
Comments:					
1.8.8	<p>The Plan includes standards to integrate development of individual parcels to create a cohesive pedestrian oriented center. The following design considerations are included (as illustrated by Figures 3-18 and 3-19 of the SOI GPA):</p> <ul style="list-style-type: none"> • integration of multiple buildings and uses into a cohesive development pattern; • siting of buildings to create a common/semi-continuous “building wall” directly fronting sidewalks, plazas, and other open spaces—areas may be excepted to incorporate courtyards and corridors; • location of parking to the rear of street facing structures, subterranean, or in structures; • use of multiple building volumes, masses, heights, and highly articulated facades to promote visual interest and convey the sense of individual storefronts/businesses; • use of vertical setbacks above the second level to reduce visual impacts along sidewalks and street frontages; • design of the ground floor of structures along the street frontage of commercial and mixed use buildings to enhance pedestrian activity (extensive windows, clearly defined entries, modulation of facades, outdoor patios and seating, etc.) (as illustrated by Figures 3-20, 3-21, and 3-22 of the SOI GPA); • integration of consistent and well-designed building and public signage; • develop sidewalks and other public spaces to support casual gatherings, outdoor dining and retail, entertainment, arts exhibitions and performances, community events, and similar functions; and • incorporate streetscape amenities along the street frontages (benches, trees, planters, decorative paving, pedestrian oriented signage and lighting, trash receptacles, fountains, information kiosks, telephones, news racks, banners, public art, and similar elements). 	X		3,4, and 8	
Comments:					

Policy	Fully Complies	Partially Complies	S.P Sec. No.	N/A
1.8.9 The Plan incorporates at least one major public plaza/square as a centerpiece of community activity and identity of sufficient size to accommodate events and celebrations, outdoor performances, community meetings, picnics, farmers markets, and similar functions.	X		3	
Comments:				
1.8.10 The Plan includes provisions to consolidate parking facilities, with retail uses located along the street frontage.	X		8 and 9	
1.8.11 The Plan includes standards to site and design multi-family housing to create a cohesive and continuous corridor, rather than independent “islands” in accordance with Policy 1.7.5; and promote a high quality of design in accordance with Policy 1.4.7 (except for the use of extensive landscaped setbacks).	X		3,8 and 9	
Comments:				
1.8.12 The Plan includes provisions to integrate a diversity of housing types within any block rather than a singular type (e.g., duplexes, townhomes, and courtyard units).	X		3 and 8	
Comments:				
1.8.13 The Plan includes provisions to integrate public meeting facilities and other community services with retail and other high activity uses.	X		3, 8 and 9	
Comments:				
1.8.14 The design of internal local streets emphasizes pedestrian activity (15' plus width sidewalks) and reduces traffic speed using such techniques as reduced width, angled parking, landscaped “pullouts”/ chokers, or traffic circles.	X		4	
Comments:				
1.8.15 The Plan includes provisions to establish clearly defined “entries” to the Town Center, including the use of signage, art (banners, sculptures, etc.) landscape, fountains, lighting, building massing, and other techniques.				X

Policy		Fully Complies	Partially Complies	S.P Sec. No.	N/A
Comments:	The General Plan does not designate West Haven for Town Center uses.				
1.8.16	The Plan establishes pedestrian, bicycle, greenways, and other corridors that link the Town Center with adjacent “Residential Neighborhoods” and, if developed, educational campus.				X
Comments:	The General Plan does not designate West Haven for Town Center uses.				
1.9 Regional Centers					
1.9.1	The Plan accommodates regional serving retail commercial, professional offices, entertainment, dining, hotel/motel, conference facilities, hospitals and supporting medical offices, research laboratories, and facilities, financial institutions, sports stadiums/arenas and facilities, and similar uses.				X
Comments:	The General Plan does not designate West Haven for the above uses.				
1.9.2	The Plan accommodates multi-family housing, mixed uses that incorporate housing and retail/offices, and live/work facilities that is integrated with other regional serving uses.				X
Comments:	The General Plan does not designate West Haven for the above uses.				
1.9.3	The Plan encourages the inclusion of community meeting rooms, day-care, and other public facilities.	X		9	
Comments:					
1.9.4	The Plan accommodates buildings at a height of 1 to 3 stories, with 4 stories allowed for mixed use structures. This would accommodate a maximum floor area ratio of 0.5:1 for commercial/office uses and 2.0:1 for mixed use buildings. Sports stadium/arena, hotel/conference facilities, and other “specialty” uses may require additional height.				X
Comments:	The General Plan does not designate West Haven for commercial or office uses.				

Policy		Fully Complies	Partially Complies	S.P Sec. No.	N/A
1.9.5	The Plan accommodates free-standing multi-family residential uses at an overall average density of 18 units per gross acre.	X		3 and 9	
1.9.6	<p>The Plan includes provisions to integrate development of individual parcels to create a cohesive center, which considers the (see Figure 3-16, SOI General Plan):</p> <ul style="list-style-type: none"> • development of sidewalks, plazas, and other public spaces around which individual buildings and businesses are grouped and incorporate pedestrian oriented amenities (benches, public art, fountains, pedestrian scaled lighting and signage, and similar); • inclusion of one or more public “square” to serve as a gathering place for public activity and events; • use of modulated building volumes, masses, and heights and articulated facades to create the sense of individual businesses, rather than undifferentiated “boxes”; • integration of consistent and well-designed building and public signage; • siting of a portion of buildings on the site’s peripheral streets to provide identity and connectivity with adjacent uses; • inclusion of sidewalks of sufficient width to accommodate pedestrian activity and outdoor restaurants, news stands, and other uses; • opening of the street and sidewalk/plaza facing building elevations to promote visual interest and pedestrian activity (extensive windows, clearly defined entries, and so on); • extensive use of landscape to enhance the environmental character; and • design of parking structures to be visually integrated with and continue the principal design character of commercial buildings. 				X
Comments:	<i>The General Plan does not designate West Haven for commercial or office uses.</i>				
1.9.8	The Plan includes provisions to link Regional Centers with surrounding residential neighborhoods and centers through the street and highway network, distinctively paved pedestrian walkways and crosswalks, common “palette” of street trees and landscape and street furniture, well designed signage, and similar elements.	X		4,8 and 9	
Comments:					

Policy	Fully Complies	Partially Complies	S.P Sec. No.	N/A
1.10 Community Centers				
1.10.1 The Plan accommodates large scale retail commercial (e.g., garden supply, furniture warehouses, discount retail, “big box,” and similar uses), professional offices, entertainment, dining, hotel and conference facilities, and similar uses in areas designated as “Community Commercial” by the SOI General Plan.				X
Comments:	<i>The General Plan does not designate West Haven for Community Commercial uses.</i>			
1.10.2 The Plan accommodates multi-family housing and live/work facilities that is integrated with other region serving uses.	X		3	
Comments:				
1.10.3 The Plan accommodates a community center of approximately 150,000 to 225,000 square feet of commercial uses for each 9,000 to 15,000 residents.				X
Comments:	<i>The General Plan does not designate West Haven for Community Commercial uses.</i>			
1.10.4 The Plan includes provisions limiting buildings to 1 to 2 stories and a maximum floor area ratio of 0.35:1 with surface parking.				X
Comments:	<i>The General Plan does not designate West Haven for Community Commercial uses.</i>			
1.10.5 The Plan includes provisions to accommodate free-standing residential uses at an overall average density of 18 units per gross acre.	X		3	
Comments:				
1.10.6 The Plan includes provisions to integrate development of individual parcels to create a cohesive center considering the design and development principles defined by Policy 1.9.6.				X
Comments:	<i>The General Plan does not designate West Haven for Community Commercial uses.</i>			
1.10.7 The Plan includes provisions to site and design development of multi-family housing to convey a high level of visual quality in accordance with Policy 1.4.7.	X		3, 8 and 9	

Policy		Fully Complies	Partially Complies	S.P Sec. No.	N/A
Comments:					
1.10.8	The Plan includes provisions to link Community Centers with surrounding residential neighborhoods and centers through the street and highway network, distinctively paved pedestrian walkways and crosswalks, common “palette” of street trees and landscape and street furniture, well designed signage, and similar elements.				X
Comments:	The General Plan does not designate West Haven for Community Commercial uses.				
1.11 Educational Campus					
1.11.1	The Plan accommodates educational, administrative, academic, vocational, medical, research, athletic, student housing, services, cultural (library, museum, performance, etc.), and other supporting uses.	X		3 and 5	
Comments:					
1.11.2	The Plan includes research and educational uses that reflect the agricultural history of the Sphere of Influence and promotes water fowl habitat restoration and management.	X		3 and 5	
Comments:					
1.11.3	The Plan includes provisions for public meeting rooms, auditoriums, concert facilities, museums, libraries, and recreational facilities (e.g., sports fields) that are accessible to and serve adjacent residential neighborhoods.	X		3 and 4	
Comments:					
1.11.4	The Plan includes provisions to site and design development to convey a “campus” environment including the clustering of buildings on common plazas and courtyards, linkage of all areas by walkways, and extensive use of landscape.				X
Comments:	The General Plan does not designate the West Haven project site for an Educational Campus.				

Policy		Fully Complies	Partially Complies	S.P Sec. No.	N/A
1.11.5	The Plan includes provisions to site buildings and design the campus to promote continuity with the development fabric of the adjacent Town Center and business parks (e.g., continuity of a “Main Street” and overall street pattern, location of administrative offices as a visual terminus for the Town Center, continuity of greenways, etc.). Avoid the establishment of a isolated, “walled” environment.				X
Comments:	The General Plan does not designate the West Haven project site for an Educational Campus.				
1.11.6	The Plan includes provisions for walkways, bicycle paths, greenways, and other elements that link the campus with surrounding uses.				X
Comments:	The General Plan does not designate the West Haven project site for and Educational Campus.				
1.12 Business and Industrial Parks					
1.12.1	The Plan accommodates light manufacturing, research and development, technology development, medical, entertainment facilities and production, innovative technology production, and similar primary uses.				X
Comments:	The General Plan does not designate the West Haven project site for industrial and business park uses.				
1.12.2	The Plan accommodates limited supporting uses such as retail sales, product exhibition, galleries and arts exhibition, financial institutions, restaurants, health clubs, personal services, day-care, and professional offices.				X
Comments:	The General Plan does not designate the West Haven project site for industrial and business park uses.				
1.12.3	The Plan accommodates “high impact” entertainment and commercial recreation uses that are not suitable in commercial districts due to their noise, traffic, or other characteristics that may conflict with residential or commercial uses.				X
Comments:	The General Plan does not designate the West Haven project site for industrial and business park uses.				

Policy		Fully Complies	Partially Complies	S.P Sec. No.	N/A
1.12.4	The Plan accommodates live/work facilities for artists and professionals associated with other uses in the business park.				X
Comments:	<i>The General Plan does not designate the West Haven project site for industrial and business park uses.</i>				
1.12.5	The Plan discourages the development of extensive warehouse development.				X
Comments:	<i>The General Plan does not designate the West Haven project site for industrial and business park uses.</i>				
1.12.6	The Plan includes provisions limiting building heights at 1 to 3 stories and a maximum floor area ratio of 0.4:1.				X
Comments:	<i>The General Plan does not designate the West Haven project site for industrial and business park uses.</i>				
1.12.7	<p>The Plan includes site and design provisions to establish a cohesive and integrated district considering the following (see Figure 3-19 of the SOI GPA):</p> <ul style="list-style-type: none"> • development of a network of pedestrian walkways and plazas around buildings sited and concentrated to connect a site with abutting properties; • location of parking to the rear of buildings fronting pedestrian plazas or in structures; inclusion of restaurants, retail shops, services, and other “high activity” uses in the ground floor of structures facing pedestrian areas; • inclusion of restaurants, retail shops, services, and other “high activity” uses in the ground floor of structures facing pedestrian areas; • inclusion of design elements that visually tie individual buildings and sites together such as walkways, trellises, arcades, landscape, signage, and lighting; and • incorporation of monuments, signs, landscape, and other elements that clearly define entry points and activity locations. 				X
Comments:	<i>The General Plan does not designate the West Haven project site for industrial and business park uses.</i>				

Policy		Fully Complies	Partially Complies	S.P Sec. No.	N/A
1.12.8	The Plan includes site and design provisions requiring business and industrial park projects to convey visual interest and character considering: <ul style="list-style-type: none">• modulation of building volumes, masses, and heights to reduce bulk;• architectural treatment of all visible elevations;• use of consistent and well-designed building and site signage; and• incorporation of extensive landscape along street frontages, common open spaces, and parking lots.				X
Comments:	The General Plan does not designate the West Haven project site for industrial and business park uses.				
1.13 Lake/Water Element					
1.13.1	The Plan includes provisions for a lake and/or streams for visual and recreational use that are abutted by commercial, residential, and other appropriate uses.				X
Comments:	The General Plan does not designate the West Haven project site for water features or Town Center uses.				
1.13.2	The Plan includes provisions to site and design development to take advantage of lake views and access including the location of buildings to “open onto” the lake and/or streams--for example, the Town Center’s public plazas and outdoor restaurants should extend to the waterfront.				X
Comments:	The General Plan does not designate the West Haven project site for water features or Town Center uses.				
1.13.2	The Plan incorporates pedestrian walkways/promenades and public parks along the lake frontage.				X
Comments:	The General Plan does not designate the West Haven project site for water features or Town Center uses.				
1.13.3	The Plan provides visual “windows” to the lake from surrounding streets and public places.				X
Comments:	The General Plan does not designate the West Haven project site for water features or Town Center uses.				
1.13.4	The Plan links residential neighborhoods adjacent to the lake by a network of pedestrian walkways, greenways, and bike paths.				X

CITY OF ONTARIO NEW MODEL COLONY SPECIFIC PLAN POLICY MATRIX

Policy		Fully Complies	Partially Complies	S.P Sec. No.	N/A
Comments:	The General Plan does not designate the West Haven project site for water features or Town Center uses.				
1.14.1	The Plan includes provisions for one or more golf courses (minimum of 150 acres each) with supporting club houses, retail services, and overnight accommodations within “Residential Neighborhoods.”				X
Comments:	The General Plan does not designate the West Haven project site for golf courses within residential neighborhoods.				
1.14 Golf Course(s)					
1.14.2	The Plan includes provisions for neighborhood-oriented facilities, such as public meeting rooms, within the club house.				X
Comments:	The General Plan does not designate the West Haven project site for golf courses within residential neighborhoods.				
1.14.3	The Plan includes provisions for executive homes and other residential uses in concert with golf courses.				X
Comments:	The General Plan does not designate the West Haven project site for golf courses within residential neighborhoods.				
1.14.4	The Plan integrates golf courses with surrounding residential neighborhoods, orienting supporting facilities and housing to the course.				X
Comments:	The General Plan does not designate the West Haven project site for golf courses within residential neighborhoods.				
1.14.5	The Plan links adjacent residential neighborhoods to the golf course by a network of pedestrian walkways, greenways, and bike paths.				X
Comments:	The General Plan does not designate the West Haven project site for golf courses within residential neighborhoods.				
1.14.6	The Plan incorporate ponds and streams that assist in flood control and, as appropriate, are linked to the lake.				X
Comments:	The General Plan does not designate the West Haven project site for development of lakes.				

Policy	Fully Complies	Partially Complies	S.P Sec. No.	N/A
1.14.7 The Plan provides visual “windows” to the golf course(s) from surrounding streets and public places.				X
Comments: <i>The General Plan does not designate the West Haven project site for golf courses.</i>				
1.15 Major Community Park - “Village Green”				
1.15.1 Require that a minimum of 160 acres be designated by pertinent sub area Specific Plans for the development of a ‘Village Green’ that accommodates a diversity of active and passive recreational uses (athletic fields, picnic areas, performance venues, and botanical gardens), and that these lands be dedicated for this purpose through the development approval process.				X
Comments: <i>The General Plan does not designate the West Haven project site for development of a Village Green.</i>				
1.15.2 Require that the land acquisition and development of the “Village Green” be equitably funded by all development within the Sphere of Influence.				X
Comments: <i>The General Plan does not designate the West Haven project site for development of a Village Green.</i>				
1.15.3 Allow the acreage allocated for the development of a “Village Green” to contribute to the total parks and recreational requirement of 5 acres per thousand residents.				X
Comments: <i>The General Plan does not designate the West Haven project site for development of a Village Green.</i>				
1.15.4 The Plan uses the “village green” as an organizational element for the siting and design of development, such as the orientation and linkage of multi-family housing and commercial uses to the park (e.g., restaurants “opening” to the park) (see Figure 3-17 of the SOI GPA)				X
Comments: <i>The General Plan does not designate the West Haven project site for development of a Village Green.</i>				
1.15.5 The Plan links residential neighborhoods adjacent to the “village green” by a network of pedestrian walkways, greenways, and bike paths.				X
Comments: <i>The General Plan does not designate the West Haven project site for development of a Village Green.</i>				

CITY OF ONTARIO NEW MODEL COLONY SPECIFIC PLAN POLICY MATRIX

Policy		Fully Complies	Partially Complies	S.P Sec. No.	N/A
1.15.6	The Plan incorporates ponds and streams as part of the “village green”, that are linked to the lake, as appropriate.				X
Comments:	The General Plan does not designate the West Haven project site for development of a Village Green.				
1.16 Greenways and Open Spaces					
1.16.1	The Plan includes provisions for greenway corridors containing pedestrian paths, bicycle trails, and other recreational/open space amenities.	X		3, 4 and 8	
Comments:					
1.16.2	The Plan includes an area-wide greenway network that links all residential neighborhoods, activity centers, and amenities and directly connect to and abut parks and schools as nodes along its length.	X		3, 4 and 8	
Comments:					
1.16.3	The Plan includes provisions for joint use of SCE easement-owned corridors, storm drainage, and other infrastructure rights-of-way for greenways, where feasible and compatible with the intended primary use.	X		3, 4 and 8	
Comments:					
1.16.4	The Plan includes provisions for joint use of SCE fee-owned rights-of-way for greenways, where feasible and compatible with SCE’s secondary land use licensing program.	X		3, 4 and 8	
Comments:					
1.16.5	The Plan includes provisions for drainage channels to be designed as an open space amenity, maintaining them as natural open landscaped swales where feasible. When concrete channels are used, consider the development of landscaped greenways along their length.				X
Comments:	No drainage channels exist within the Project Site.				

Policy		Fully Complies	Partially Complies	S.P Sec. No.	N/A
1.16.6	The Plan includes provisions for drainage detention basins to accommodate passive and active recreational uses during dry periods, locating these adjacent to and extending local park uses.	X		5	
Comments:					
1.16.7	The Plan includes provisions for principal roadways including Grove Avenue, Vineyard Avenue, Archibald Avenue, Haven Avenue, Euclid Avenue, Milliken Avenue, and Edison Avenue to be designed as “parkways” with expanded right-of-ways containing landscaped medians and frontages, pedestrian paths, and other elements.	X		4	
Comments:					
1.16.8	The Plan incorporates extensive landscaping along street frontages in “urbanized” areas.	X		4 and 8	
Comments:					
1.16.9	The Plan includes design provisions for public greenways and open spaces to ensure public safety through the avoidance of physically and visually isolated spaces, maintenance of visibility and accessibility, use of lighting, and other “defensible” space concepts.	X		4 and 8	
Comments:					
1.17 Electrical Energy Transmission Corridors					
1.17.1	The Plan includes pedestrian and bicycle trails in electrical energy transmission corridors to link neighborhoods and districts.	X		3 and 4	
Comments:					
1.17.2	The Plan accommodates such uses as parking lots, storage, commercial recreation, nurseries, greenways/trails, and complementary and compatible uses in electrical energy transmission corridors in areas designated as “Neighborhood Centers,” “Community Commercial,” “Town Center,” and “Industrial/Business Parks” by the SOI General Plan.	X		3 and 8	
Comments:					

Policy		Fully Complies	Partially Complies	S.P Sec. No.	N/A
1.17.3	The Plan accommodates development in electrical energy transmission corridors in areas abutting the Village Green, parks, lake, and other major open space/recreational amenities of uses that promote continuity with the amenity such as extensive landscape, tree farms and nurseries, buffers, and similar uses.				X
Comments:	The Project Site does not contain any electrical transmission corridors abutting the Village Green, parks, lakes or other land uses listed above.				
1.17.4	The Plan accommodates development in electrical energy transmission corridors in areas traversing “Residential Neighborhoods” of uses that serve as transitions among neighborhoods, pedestrian and biking trails, landscaped buffers, recreational facilities, and similar uses that are feasible and compatible with Southern California Edison’s secondary land use licensing program. At the corridor’s intersection with arterials and collectors, consider the accommodation of uses that support the primary residential activity (e.g. parking lots for churches), which shall be designated by the Specific Plan.	X		3, 4, and 8	
Comments:					
1.17.5	The Plan includes provisions for development located in electrical energy transmission corridors be designed to complement, be compatible with, and promote continuity and cohesiveness with abutting land uses. They should not be designated to create “walls” or barriers among uses.	X		8	
Comments:					
1.17.6	The Plan includes provisions encouraging Southern California Edison Company and private owners to visually improve, respectively, fee-owned and easement-owned rights-of-way that are retained for electrical transmission purposes to ensure their compatibility with abutting uses. This should emphasize the incorporation of landscape, parklands, and greenways.	X		8	
Comments:					
1.18 Phasing					

Policy		Fully Complies	Partially Complies	S.P Sec. No.	N/A
1.18.1	The Plan includes a phasing Plan to ensure adequate supporting public services, retail, parks, schools, and other uses are in place to support residential uses. These should establish increments of residential development that “trigger” and cannot be exceeded until the construction of appropriate improvements has been initiated. Standards for schools, infrastructure, and other public services should be determined in collaboration with pertinent service agencies. Standards for local serving retail, parks, and other uses should be confirmed by the City and reflect other policies contained in this Plan.	X		10	
Comments:					
1.18.2	A fiscal impact analysis for the proposed Specific Plan has been prepared describing annual costs and revenues associated with development phasing for at least a ten year period as input to the definition of land use balance thresholds and limits.	X			
Comments:	To be prepared by City as part of project review				
1.18.3	Require that developers commit to the provision of supporting uses and services through Development Agreements, Conditions of Development, bonds, and other appropriate techniques.	X		10	
Comments:	Agreements separate from the specific Plan will be executed by the developer with the City.				
2.1 Agriculture					
2.1.1	The Plan includes provisions recognizing the right of operation including the choice of cultivation procedures, crops or livestock types, crop rotation and all other functions within the traditional scope of agricultural management decisions. These rights and choices shall be exercised in a manner that is consistent with applicable environmental and resource protection policies and regulations.	X		10	
Comments:	Per project EIR				

CITY OF ONTARIO NEW MODEL COLONY SPECIFIC PLAN POLICY MATRIX

Policy	Fully Complies	Partially Complies	S.P Sec. No.	N/A
2.1.2 Adopt and enforce the provisions of the Right-to-Farm Ordinance and the State nuisance law (California Code Subsection 3482). Such an ordinance would require nonagricultural residents be made aware of the local agricultural operations, their practices, and the potential agriculturally related impacts (noise, odor, etc.). See Appendix A, SOI GPA for a “Right to Farm” Ordinance example. <i>City Initiated, not required for SP’s</i>				X
Comments:	<i>The City of Ontario is the responsible entity for adopting and enforcing provisions of a right to farm ordinance</i>			
2.2.1 The Plan discourages the placement of new non-agricultural land uses in such a manner that agricultural fields or parcels become isolated or difficult to economically and conveniently farm.	X		3	
Comments:				
2.2.2 The Plan encourages the infilling of development in previously urbanized areas or immediately adjacent to existing urban development as an alternative to isolated, “leapfrog” projects	X		3	
Comments:	<i>Per New Model Colony General Plan Amendment</i>			
2.2.3 The Plan discourages the premature parcelization of large holdings that are not infill or urban perimeter properties.	X		3,9 & 10	
Comments:				
2.3.1 The Plan includes provisions to limit premature introduction of urban uses into farming areas that may create the potential for conflict with continued agricultural use.	X		3,9 & 10	
Comments:				
2.3.2 The Plan includes a Transitional Roadway Plan that minimizes farm product transport/farm equipment conflicts with urban use related transport. Said Plan includes the following: <ul style="list-style-type: none"> existing routes essential to the transportation of farm products through remaining agricultural areas and through non-agricultural areas as needed to access regional transportation routes; prioritize those roads that will be first to convert to primarily serving urban uses; and roadway signage and markings to inform drivers that farm transport vehicles and machinery may be using the roads. 	X		4	

Policy		Fully Complies	Partially Complies	S.P Sec. No.	N/A
Comments:					
2.3.3	The Plan provides measures to prevent urban runoff flooding and silting from impacting agricultural operations.	X		3, 5 and 9	
Comments:					
2.3.4	Inform new residents and property owners that existing agricultural uses may create nuisances such as flies, odors, dust, noise, night light, and chemical spraying.	X			
Comments:	<i>To be included in real estate sales package</i>				
2.3.5	The Plan includes provisions to protect agricultural lands from trespass, theft, vandalism, roaming dogs, and comparable impacts from urban uses.	X		3 and 9	
Comments:					
2.4.1	Oppose regulations that impact agricultural operations unless they are justified on the basis of sound environmental concerns.				X
Comments:	<i>City to implement – Not a requirement of individual specific Plans.</i>				
2.4.2	Assist farmers and agricultural land owners in their efforts to understand and abide by regulations and to process applications for permits and licenses.				X
3.1 Housing					
3.1.1	Provide for the development of an estimated 20,396 single family and 10,792 multi-family dwelling units to sustain sound economic development (applies to entire 8,069 acre Sphere of Influence).	X		3	
Comments:					
3.1.2	Ensure that the densities and characteristics of residential projects fulfill the intent of applicable land use designations.	X		3, 8 and 9	

Policy		Fully Complies	Partially Complies	S.P Sec. No.	N/A
Comments:					
3.2.1	The Plan includes provisions for infrastructure needed to support anticipated residential development and ensures the proper integration of all services.	X		4, 5 and 10	
Comments:					
3.2.2	Maintain internal consistency among the General Plan's elements to provide the necessary services and infrastructure for urban development.				X
Comments:	<i>City to implement; not a requirement for individual specific Plans.</i>				
3.3.1	The Plan allows flexibility in the type of units developed on vacant, residentially designated properties in master-planned communities and other planned developments.	X		3 and 9	
Comments:					
3.3.2	The Plan includes a mix of housing types.	X		3	
Comments:					
3.3.3	The Plan encourages the development of residential uses in association with compatible nonresidential uses (i.e. mixed-use).	X		3	
Comments:					
3.3.4	The Plan provides housing opportunities for upper-income residents by designating sites in selected areas for large-lot development or sites adjacent to significant amenities.	X		4	
Comments:					
3.4.1	The Plan includes comprehensive design guidelines and development standards ensuring residential design that is functional, people and pedestrian-oriented, aesthetically pleasing, and contributes to a sense of community through the sensitive arrangement of buildings, open space (public and private), and circulation (vehicular and pedestrian).	X		8	

Policy		Fully Complies	Partially Complies	S.P Sec. No.	N/A
Comments:					
3.5.1	The Plan includes provisions to integrate development with neighborhoods in a way that minimizes adverse impacts on privacy, noise levels, and traffic.	X		3 and 9	
Comments:					
3.5.2	The Plan includes provisions for physical design elements of development (e.g., scale, street and circulation design, architectural elements) to complement and respect that of surrounding residential neighborhoods.	X		3, 4 and 8	
Comments:					
3.5.3	Where the new development’s site design characteristics and standards will differ from those within an adjacent neighborhood, use design features (street trees, sidewalk siting and materials, etc.) that are common in both the neighborhoods as measures to transition from the surrounding neighborhood to the new neighborhood.	X		3, 8 and 9	
Comments:					
3.6 & 3.7 Affordable Housing					
3.6.1	Designate sufficient vacant land with maximum densities high enough to facilitate the development of housing affordable to lower-income households.	X			
Comments:	Specific Plan will comply with applicable affordable housing policies and implementation ordinances.				
3.7.1	The Plan includes the provisions for affordable to very low, low, and moderate income households.		X		
Comments:	The Plan will accommodate housing needs of moderate income households				

CITY OF ONTARIO NEW MODEL COLONY SPECIFIC PLAN POLICY MATRIX

Policy		Fully Complies	Partially Complies	S.P Sec. No.	N/A
3.7.2	The Plan implements housing programs that comply with the State of California Housing and Community Development requirements, and ensures compliance and attainment of the regional housing need assessment “affordable” unit target.	X			
Comments:	Specific Plan will comply with the State of California Housing and Community Development requirements.				
3.8 Housing for Special Needs					
3.8.1	The Plan includes provisions for multi-family units specifically designed for the elderly located near Neighborhood Centers that provide access to transit and pedestrian access to amenities, goods, and services (i.e., recreational areas, commercial districts, and medical services).				X
Comments:	The General Plan does not require multi-family units for the Specific Plan.				
3.8.2	The Plan includes provisions for rental units specifically designed for students to be located near the educational campus area.				X
Comments:	The Project Site is not located near an areas designated for an educational campus.				
PART II INFRASTRUCTURE AND PUBLIC SERVICE					
5.1 Water Sources					
5.1.3	Require Specific Plans and large development projects to prepare a water system planning study.				X
Comments:	Specific Plan incorporates City Master Plan recommendations for water				
5.1.4	Consider requiring the planning and construction of a dual pipe system to supply reclaimed water throughout the Sphere of Influence.	X		5	
Comments:					
5.2.1	Require new development to construct and dedicate water supply facilities.	X		5	
Comments:					

Policy		Fully Complies	Partially Complies	S.P Sec. No.	N/A
5.2.2	Designate, preserve, and acquire land, as necessary, for water wells and storage facilities.	X		5	
Comments:	Project will participate In City’s Development Impact Fee Program to construct these facilities.				
5.3.1	The Plan requires improvements to the water supply facilities necessitated by new development be borne by the new development benefiting from the improvements, either through the payment of fees, or the actual construction of the improvements.	X		5	
Comments:					
6.1 Wastewater System and Treatment					
6.1.1	Enable the planning for and construction of a wastewater system to support new development, as shown in Figure 4-11 of the SOI GPA.	X		5	
Comments:	The Plan will comply with the City’s Master Plan requirements for sewer improvements				
6.2.1	The Plan requires new developments to connect to the sewer system.	X		5	
Comments:					
6.2.2	The Plan includes provisions requiring that sewer capacity and facilities are available before building permits are issued for new development.	X		5 and 10	
Comments:					
6.3.1	The Plan includes provisions requiring the costs of improvements to the existing wastewater collection facilities necessitated by new development be borne by the new development benefiting from the improvements; either through the payment of fees, or by the actual construction of the improvements.	X		5	
Comments:					
7.1 Storm Drainage and Flood Control					

Policy		Fully Complies	Partially Complies	S.P Sec. No.	N/A
7.1.2	Require Specific Plan and development projects to prepare a storm drainage planning study for the affected drainage area.	X		5	
Comments:					
7.1.4	Permit the joint use of detention basins for non-intensive recreational purposes, in accordance with City policy.	X		5	
Comments:					
7.1.5	Require that the refined backbone infrastructure Plan will be used in the development process to ensure that each project will construct adequate drainage facilities. A detailed drainage master Plan must be in place and must have San Bernardino County Flood Control District concurrence prior to any major development approval.	X		5	
Comments:	<i>The Plan will comply with the City's Master Plan of Drainage</i>				
7.1.6	Strategically locate detention basins to mitigate downstream drainage concern as development occurs. Siting of these facilities will take into consideration potential impacts to flight paths of the crosswind runways of the Chino Airport. Detention basins shall be located as required to bring storm water flows to a safe and acceptable level downstream of Merrill Avenue. However, basins shall not be located within Referral Areas A and B and Safety Zones I and II around the Chino Airport so as to prevent potentially significant wildlife hazards to aircraft operations.	X		5	
Comments:					
7.1.7	The Plan includes provisions requiring development Plans to be consistent with and implement the Master Plan of drainage for the area as finally adopted.	X		5	
Comments:					
7.2.1	The Plan requires new development to control surface run-off through onsite measures.	X		5	
Comments:					

Policy		Fully Complies	Partially Complies	S.P Sec. No.	N/A
7.2.2	The Plan requires new development to construct and dedicate flood control and storm drainage facilities.	X		5	
Comments:					
7.2.3	Designate, preserve, and acquire land, as necessary, for storm drainage and flood control facilities.	X		5	
Comments:	<i>The Plan complies with the City's Master Plan of drainage</i>				
7.2.6	The Plan requires developers of each proposed project to submit a final drainage Plan for the City Engineer's review and approval.	X		5	
Comments:	<i>To be submitted as part of the tentative tract map submittal for the project.</i>				
7.2.8	The Plan requires developers to recommend measures which ensure that all structures located within the boundaries of the Sphere of Influence, subject to flooding from 100-year storm events, are constructed on a pad of earth elevated at least one foot above 100-year flood elevations. The recommended measures must be approved, monitored, and enforced by the City Engineer.	X		5	
Comments:	<i>To be submitted as part of the tentative tract map submittal for the project.</i>				
7.2.9	The Plan requires developers to provide evidence to the City Engineer that a National Pollutant Discharge Elimination System (NPDES) permit has been obtained from the State Water Resources Control Board (SWRCB) prior to moving construction equipment onto a Sphere of Influence site. Once obtained, the NPDES permit shall be retained on the construction site throughout the construction period, and a copy shall be filed with the City Engineer.	X		5	
Comments:	<i>To be submitted as part of the tentative tract map submittal for the project.</i>				
7.2.10	The Plan includes provisions to ensure compliance with all the terms and conditions outlined in the National Pollutant Discharge Elimination System (NPDES) permit, including the implementation of Best Management Practices (BMPs).	X		5	
Comments:	<i>Per approval of Tentative Tract Maps for the project</i>				

CITY OF ONTARIO NEW MODEL COLONY SPECIFIC PLAN POLICY MATRIX

Policy		Fully Complies	Partially Complies	S.P Sec. No.	N/A
7.2.11 The Plan includes provisions requiring developers to prepare a Storm Water Pollution Prevention Plan (SWPPP) for individual proposed projects prior to the issuance of grading permits. These Plans shall be submitted to the City Engineer for review and comment prior to implementing any SWPPP provisions or starting any construction activity. A copy of the SWPPP shall be held by the construction contractor(s) on the construction site throughout development of each project. The City Engineer will monitor and enforce the provisions of the SWPPP.		X		5	
Comments:	Per approval of Tentative Tract Maps for the project				
8.1 Schools					
8.1.2 The Plan accommodates sufficient schools to meet School District criteria as shown in Table 4-10 of the SOI GPA . Based on these, the Land Use Plan’s buildout will necessitate an estimated 20 elementary school sites, 5 middle school sites, and 3 high school sites within the total Sphere of Influence, with the number of schools in each Planning sub area indicated in Table 3-4 of the SOI GPA . The required number of schools to be constructed may vary due to modifications of the school district’s standards to account for demographic changes, the number and types of dwelling units, resident characteristics, and other pertinent criteria.		X		3, 5 and 10	
Comments:	The project includes a 10 acre site for development of an elementary school.				
8.1.3 Locate schools within a designated Neighborhood Center to the extent feasible, as illustrated in Figures 3-8 and 3-9 of the SOI GPA .					X
Comments:	The school’s location is not adjacent to the Neighborhood Center.				
8.1.4 Encourage schools to be located as neighborhood focal points, with linkage to recreational uses, pedestrian paths, and bike ways, when locating schools in a Neighborhood Center is not feasible.		X		3	
Comments:					
8.1.5 Encourage the consolidation or location of school campuses adjacent to one another, thereby enabling a joint use of recreational space, library, auditoriums, and other facilities.		X		3	

Policy		Fully Complies	Partially Complies	S.P Sec. No.	N/A
Comments:					
8.1.6	Locate schools to avoid impacts attributable to Chino Airport. To ensure efficient accessibility of schools from residential neighborhoods, work with the California Department of Transportation, Division of Aeronautics, and Department of Education to permit schools to be developed at acceptable locations within the Airport’s two-mile radius.	X		3	
Comments:					
8.1.8	Encourage the school districts to design schools so that their periphery maintains an appropriate transition with adjoining residential neighborhoods; avoiding the use of walls, fences, and landscape which establish a visual barrier.	X		3	
Comments:					
8.1.11	Locate preschool and day-care facilities in appropriate areas throughout the Sphere of Influence to meet the needs of a growing population. Require specific planned areas to designate sites for day-care facilities.	X		9	
Comments:					
9.1 Police Protection					
9.1.3	The Plan identifies appropriate sites for the construction of a police station within the neighborhood Centers, Town Center, or other activity nodes.	X		3	
Comments:					
9.1.4	The Plan encourages consolidation of public facilities, thereby creating mini civic centers comprised of police stations, libraries, fire stations, schools, parks, and administrative offices, etc.	X		3	
Comments:					
9.2.1	The Plan incorporates defensible space designs. These designs should help ensure maximum visibility and security for entrances, pathways, and corridors, as well as open space (both public and private) and parking lots/structures.	X		3, 8 and 9	

Policy		Fully Complies	Partially Complies	S.P Sec. No.	N/A
Comments:					
9.2.2	The Plan includes lighting provisions providing adequate exterior illumination to facilitate security surveillance around commercial, industrial, multi-family, and public structures.	X		8 and 9	
Comments:					
10.1 Fire Protection and Emergency Medical Service					
10.1.2	Require that a total of three fire stations be incorporated within the Neighborhood centers, Town center, or other activity nodes.	X		3	
Comments:					
10.1.3	The Plan encourages the consolidation of public facilities thereby creating mini civic centers comprised of police stations, libraries, fire stations, schools, parks, and administrative offices, etc.	X		3	
Comments:					
11.1 Circulation					
11.1.1	The Plan promotes the timely development of the backbone circulation Plan, as shown in Figure 4-14 – SOI GPA that is phased and based on projected needs generated by the implementation of the SOIGPA Land Use Plan and the surrounding uses.	X		4	
Comments:					
11.1.2	Develop a detailed master Plan to phase the backbone transportation infrastructure in a logical manner. The master Plan should address coordination with each of the Specific Plan's master planning efforts and funding mechanisms including cost sharing and future credits.	X		4	
Comments:					

Policy	Fully Complies	Partially Complies	S.P Sec. No.	N/A
11.1.3 Implement hierarchy of roadways and roadway classifications, as shown in Figure 4-15, Figure 4-16, and Figure 4-17 of the SOI GPA , that provides for efficient movement of regional through traffic and also protects the residential neighborhoods from intrusion of through traffic.	X		4	
Comments:				
11.1.4 Reserve adequate rights-of-way for roadways to implement the hierarchy of local roads within the Sphere of Influence that is consistent with the planned land uses.	X		4	
Comments:				
11.1.5 The Plan establishes safe and efficient truck routes that minimize exposure to noise sensitive land uses and reduce other adverse impacts to adjacent land uses, (see Figure 4-18 – SOI GPA.)	X		4	
Comments:				
11.1.6 The Plan consider the development of high-capacity, regional traffic serving facilities in the east-west and north-south direction through the Sphere of Influence, such as Edison Avenue, Euclid Avenue, Archibald Avenue, and Milliken Avenue.	X		4	
Comments:				
11.1.7 The Plan identifies appropriate intelligent transportation system (ITS) elements to be incorporated into the Sphere of Influence's transportation infrastructure. The ITS elements include such technologies as changeable message signs, closed circuit television, highway advisory radio, loop detectors, fiber optic communications connections, and links to regional traffic management centers.				X
Comments:	<i>The City will implement this policy on an area wide basis.</i>			
11.1.8 The Plan incorporates a transitional Roadway Plan that minimizes agricultural vehicle-urban vehicle conflicts, minimizes agricultural vehicles impact on non-agricultural uses, and transitions the Sphere of Influence's roadways from agricultural oriented to urban oriented.	X		4	
Comments:				

CITY OF ONTARIO NEW MODEL COLONY SPECIFIC PLAN POLICY MATRIX

Policy		Fully Complies	Partially Complies	S.P Sec. No.	N/A
11.1.9	The Plan augments and implements the comprehensive Citywide Traffic Model within the Sphere of Influence area to reflect the Sphere of Influence land uses and the proposed circulation system.	X		4	
Comments:	<i>Per the project EIR traffic study</i>				
11.2.1	The Plan maintains a level of service not to exceed LOS D for intersections during the peak hours.	X		4	
Comments:	<i>Per the project EIR traffic study</i>				
11.2.2	The Plan maintains a peak period level of service not to exceed LOS D for collector and arterial roadways.	X		4	
Comments:	<i>Per the project EIR traffic study</i>				
11.2.3	The Plan maintains a peak period level of service not to exceed LOS C for residential streets.	X		4	
Comments:	<i>Per the project EIR traffic study</i>				
11.3.1	Coordinate with Riverside County and Caltrans to ensure the timely design and implementation of the Galena Interchange on the I-15 Freeway.				X
Comments:	<i>The City will implement this General Plan policy.</i>				
11.3.2	Coordinate with Caltrans and monitor traffic growth around freeway interchanges to determine the need, timing, and design for ramp improvements and additional right-of-way needs at the Route 60 Freeway interchanges.				X
Comments:	<i>The City will implement this General Plan policy.</i>				
11.3.3	Actively support the County of San Bernardino's Congestion Management Plan.	X		4	
Comments:	<i>The Project EIR will identify CMP improvements required as part of project development.</i>				

Policy		Fully Complies	Partially Complies	S.P Sec. No.	N/A
11.3.4	Support and implement locally applicable portions of the Regional Mobility Plan and Air Quality Management Plan.	X		4	
Comments:	<i>The Project EIR will identify required as part of project development.</i>				
11.3.5	Coordinate the development of the Sphere of Influence's circulation Plan with adjacent jurisdictions and regional agencies, including City of Chino to the west and Riverside County to the east and south, for proper future connectivity and service to regional trips.	X		4	
Comments:	<i>The City will implement this General Plan policy on an areawide basis.</i>				
11.3.6	Specific Plans for proposed developments within the SOI shall not be approved and adopted until such time as the San Bernardino County Congestion Management Program Traffic Impact Analysis (CMP TIA) for the Sphere of Influence General Plan Amendment has been completed and approved. This CMP TIA shall identify improvement measures to mitigate impacts of the traffic generated by the Sphere of Influence on transportation systems in the City of Ontario, the unincorporated San Bernardino County and all neighboring cities, which fall within the five-mile radius (designated impact area) of the Sphere of Influence boundaries, per CMP TIA guidelines.	X		4	
Comments:					
11.3.7	<p>The Plan includes a separate traffic and circulation studies to:</p> <ul style="list-style-type: none"> Assess internal circulation system need and to develop a traffic circulation Plan for the Specific Plan area; Identify regional transportation infrastructure connectivity requirements; and Identify specific traffic impacts related to the buildout of the Specific Plan on the surrounding areas (outside the Specific Plan) and to identify traffic improvement measures to mitigate these impacts. 	X			
Comments:	<i>Per project EIR traffic study</i>				

CITY OF ONTARIO NEW MODEL COLONY SPECIFIC PLAN POLICY MATRIX

Policy	Fully Complies	Partially Complies	S.P Sec. No.	N/A
11.3.8 Circulate all relevant traffic and circulation studies prepared for proposed Specific Plan developments within the Sphere of Influence area to all neighboring local jurisdictions that may be potentially impacted by the traffic generated from the buildout of the Specific Plan's land uses.	X		4	
11.3.9 For the following arterial segments outside the Sphere of Influence: <ul style="list-style-type: none"> • Euclid Avenue – Riverside Drive to Philadelphia Street • Grove Avenue – Saint Andrews Street to 4th Street • Vineyard Avenue – Riverside Drive to Route 60 • Archibald Avenue - Riverside Drive to Philadelphia Street • Haven Avenue – Creekside to Route 60; Mission Boulevard to Airport Drive • Milliken Avenue – Riverside Drive to Mission Boulevard Provide additional through-traffic lanes by: <ul style="list-style-type: none"> • widening the roads to accommodate the ultimate number of lanes designated in the General Plan; • modifying functional classification for arterials to accommodate additional traffic lanes; • restriping; and • using parking restrictions and other measures, where feasible. 				X
Comments:	<i>The Specific Plan does not encompass the above roadways.</i>			
11.4.1 Require each major development phase or Specific Plan to develop a master Plan of streets and conduct a comprehensive traffic impact study, as appropriate.	X		4	
Comments:	<i>Per project EIR</i>			
11.4.2 As condition of development for each planning area, require that proper connecting facilities and capacity be provided to the regional transportation system to minimize impacts to existing roadways.	X		4	

Policy		Fully Complies	Partially Complies	S.P Sec. No.	N/A
Comments:	<i>Per Project EIR traffic study</i>				
11.4.3	Require that development within the Sphere of Influence be consistent with the provisions of the County-wide Congestion Management Program.	X			
Comments:	<i>Per project EIR traffic study</i>				
11.4.4	The Plan prohibits future development from providing backout driveways onto arterial roadways.	X		4	
Comments:					
11.4.5	The Plan discourages future development from providing backout driveways onto collector roadways.	X		4	
Comments:					
11.4.6	The Plan considers the use of alley ways (20 feet recommended width) to add flexibility to frontage designs and assist in the creation of more pedestrian oriented front areas.	X		3 and 5	
Comments:					
11.4.7	<p>The Plan promotes development of local street patterns that create and unify neighborhoods, rather than divide them, through the following means:</p> <ul style="list-style-type: none"> local street patterns should provide access between subdivisions within a neighborhood, with the exception of through traffic which should be directed onto major and secondary arterials; and the local street system should be logical and understandable for the user. Creation of circuitous and confusing travel paths between internal neighborhood areas and adjacent arterials should be avoided. 	X		3, 4 and 8	
Comments:					
11.4.8	The Plan includes measures requiring developers to provide all required onsite infrastructure and contribute their proportional share to offsite improvements. (I-30, I-31, and I-32)	X		4 and 10	

Policy		Fully Complies	Partially Complies	S.P Sec. No.	N/A
Comments:					
11.4.9	The Plan includes an impact fee system in order to offset the cost of transportation required by new development.	X		4	
Comments:	<i>The developer will participate in the adopted Development Impact Fee program as required.</i>				
11.4.10	Consider whether it is appropriate to establish a transportation benefits district.				X
Comments:	<i>The City will implement this General Plan policy on an area wide basis.</i>				
11.5.1	The Plan includes a comprehensive Transportation Mobility Plan to improve the movement of pedestrians, bicyclists, public transit, truck and automobile, freight, passenger rail, etc., within the Sphere of Influence.	X		4	
Comments:					
11.5.2	The Plan Integrates the Transportation Mobility Plan with the Congestion Management Planning process to identify and develop necessary transportation services, and assist land use and urban design decision making.				X
Comments:	<i>The City will implement this General Plan policy on an area wide basis.</i>				
11.5.3	The Plan promotes a variety of transportation modes.	X		3 and 4	
Comments:					
11.5.4	The Plan explores the possibility of developing transit centers within the appropriate Specific Plan areas such as the Town Center, educational campus, and adjacent to the Regional Centers along Milliken Avenue and Euclid Avenue.				X
Comments:	<i>The Project Site is not designated for any of the above land uses and is not located near or adjacent to any of the above listed use.</i>				
11.5.5	Analyze cost/benefit ratios in determining future publicly financed transportation improvements.	X		10	

Policy		Fully Complies	Partially Complies	S.P Sec. No.	N/A
Comments:					
11.5.6	Consult and coordinate with the various transit agencies in order to bring about improved transit service to the Sphere of Influence.				X
Comments:	<i>The City will implement this General Plan policy on an area wide basis.</i>				
11.5.7	Through coordination with transit agencies, the Plan provide transit friendly design with the objective of maximizing the potential for transit use.	X		4 & 5	
Comments:					
11.5.8	The Plan includes provisions requiring development to fund transit facilities, such as transit centers, bus shelters and turnouts, where feasible.	X		4 & 5	
Comments:					
11.5.9	The Plan includes provisions requiring that development provide for transit-friendly features such as buildings located close to streets, bus amenities, etc.	X		3 and 9	
Comments:					
11.5.10	The Plan encourages the development of connections with commuter rail stations in the vicinity of the Sphere of Influence.	X		4	
Comments:					
11.6.1	The Plan encourages nonresidential developments to provide employee incentives for using alternatives to the conventional single occupant automobile (i.e., carpools, vanpools, buses, bicycles, walking, telecommuting, etc.).	X		4	
Comments:					
11.6.2	The Plan supports national, state, and regional legislation directed at encouraging the use of carpools and vanpools.	X		3 and 4	

CITY OF ONTARIO NEW MODEL COLONY SPECIFIC PLAN POLICY MATRIX

Policy		Fully Complies	Partially Complies	S.P Sec. No.	N/A
Comments:					
11.6.3	The Plan encourages the establishment of Transportation Management Associations (TMAs) within the commercial and industrial areas of the Sphere of Influence.				X
Comments:	<i>The West Haven Specific Plan does not encompass the above uses.</i>				
11.6.4	The Plan promotes the use of alternative transportation modes to the single occupancy vehicle within the Sphere of Influence, such as carpooling, bus and rail transit and explore the feasibility of linking such systems with other regional transportation systems.	X		4	
Comments:					
11.6.5	The Plan promotes ridesharing through publicity and provision of information to the public.				X
Comments:	<i>The City will implement this General Plan policy on an area wide basis.</i>				
11.6.6	The Plan encourages the preservation and development of freight and passenger/commuter rail that occur or would occur in the region.				X
Comments:	<i>The West Haven Specific Plan does not encompass the above uses.</i>				
11.6.7	The Plan encourages a telecommunications center within the planning area to reduce vehicle miles traveled.	X		5	
Comments:					
11.6.8	Develop a program for traffic signal coordination and synchronization for the arterial street system in coordination with and connecting to the City's signal system.	X		4	
Comments:	<i>Per the recommendations of the project EIR traffic study</i>				
11.7.1	The Plan requires parking to be consolidated along parkways, arterials, and pertinent collectors, eliminating the number of ingress and egress points. Prime candidate locations for consolidated parking are the "Neighborhood Centers", "Town Center", "Business Parks", and "Regional Centers". (I-7 and I-10)	X		8 and 9	

Policy		Fully Complies	Partially Complies	S.P Sec. No.	N/A
Comments:					
11.7.2	The Plan requires that sufficient and secure bicycle parking be provided in all parking areas.	X		8 and 9	
Comments:					
11.7.3	The Plan promotes sharing of off-street parking facilities.	X		8 and 9	
Comments:					
PART III AESTHETIC, CULTURAL, OPEN SPACE & RECREATIONAL RESOURCES					
12.1 Parks & Open Space					
12.1.1	Provide a minimum 509 acres of parkland consisting of a mix of mini, neighborhood, community and “village green” facilities to achieve a standard of 5 acres of parkland per 1,000 residents. The actual park acreage may vary as a result of future modifications of the City standards.	X		10	
Comments:	The project developers will participate in the development impact fee program as required for park fees.				
12.1.2	Update the Parks and Bike Trail Master Plan to provide specific criteria and guidelines for the siting, design and programming of parks and recreational facilities. Consider the following when creating the criteria for acquiring or receiving dedicated parkland: <ul style="list-style-type: none">The usability of proposed parklands and the ease of accessibility for future users; andBalance of passive and active recreational opportunities and facilities designed to meet the existing and future needs of all user groups.				X
Comments:	The City will implement this General Plan policy on an area wide basis.				

CITY OF ONTARIO NEW MODEL COLONY SPECIFIC PLAN POLICY MATRIX

Policy	Fully Complies	Partially Complies	S.P Sec. No.	N/A
12.1.3 The Plan incorporate a comprehensive and unified parks and recreation plan that: <ul style="list-style-type: none"> identifies mini, neighborhood, and community park sites in accordance with the service standards and updated Parks and Bike Trail Master Plan criteria; integrates neighborhood parks with Neighborhood Centers and schools (see Figure 5-2); links parks by pedestrian greenway and bike trail networks (see Figure 5-3); incorporates passive and active recreational uses as specified in the Parks and Bike Trail Master Plan; and defines a park acquisition and improvement financing plan. (I-3 and I-34) 	X		3	
Comments:				
12.1.4 The Plan encourages: <ul style="list-style-type: none"> golf course site(s) be developed in the Sphere of Influence; school and park facilities be located in a manner that permits shared use of auditoriums, playing fields, and so on; public facilities (auditoriums, amphitheaters, day-care centers, public meeting rooms) be integrated into park design; and drainage channels be developed as an open space amenity. (I-3, I-7, and I-47) 				X
Comments:	<i>The City will implement this General Plan policy on an area wide basis.</i>			
12.1.5 The Plan requires Sub area 22 (Town Center) Specific Plan to locate park(s) and/or public open space along the lake, if the lake is developed.				X
Comments:	<i>The City will implement this General Plan policy.</i>			
12.1.6 The Plan requires that Sub area 16 and Sub area 17 Specific Plans identify sites for the development of a linear “village green” park. The Village Green will act as a recreational focal point serving the entire Sphere of Influence. The Village Green shall incorporate a diversity of passive and active uses including athletic fields, picnic areas, botanical gardens, museums, and performance venues.				X

Policy		Fully Complies	Partially Complies	S.P Sec. No.	N/A
Comments:	<i>The City will implement this General Plan policy.</i>				
12.1.7	The Plan requires that residential neighborhoods located next to a park provide pedestrian greenway and bike trails to the park.	X		3 and 4	
Comments:					
12.1.8	The Plan encourages storm drainage detention basins to be designed to accommodate passive and active recreational uses during the dry periods (see Figure 5-4 SOI GPA).	X		5	
Comments:					
12.1.9	The Plan requires the use of extensive landscaping along street frontages. Landscaping elements should include tree and plant specimens currently found within the Sphere of Influence. (I-7 and I-10)	X		4,8 and 9	
Comments:					
12.1.10	The Plan requires the dedication and development of future community and neighborhood park sites before a significant proportion of the new population to be served by the park exists. (I-7 and I-10)	X		10	
Comments:					
12.1.11	The Plan requires that new multi-family residential developments of five or more units provide recreational or open space facilities onsite and contribute appropriate fees that aid in the public development of other facilities to offset additional demands generated by their resident population. (I-7 and I-10)	X		3	
Comments:					

CITY OF ONTARIO NEW MODEL COLONY SPECIFIC PLAN POLICY MATRIX

Policy	Fully Complies	Partially Complies	S.P Sec. No.	N/A
12.1.12 The Plan requires that large-scale commercial developments, such as the Town Center, Community Centers, Regional Centers, provide open space facilities within the development for passive or active recreation or contribute fees for the public development of such uses. (I-7 and I-10)				X
Comments:	<i>The General Plan does not include the above uses within the West Haven Specific Plan.</i>			
12.1.13 The Plan encourages industrial and business parks to incorporate employee recreational facilities within their developments or contribute fees for the public development of such uses. (I-7 and I-10)				X
Comments:	<i>The General Plan does not include the above use within the West Haven Specific Plan.</i>			
12.1.14 The Plan encourages agricultural industry representatives and local university(ies) to provide educational and recreational programs that reflect the Sphere of Influence's agricultural history. (I-50)				X
Comments:	<i>The City will implement this General Plan policy.</i>			
13.1.1 The Plan incorporates a comprehensive network of greenways, pedestrian paths, and bike trails (see Figures 5-3 and 5-5 – SOI GPA), linking the Town Center, educational campus (if developed), Regional Centers, Community Commercial, Neighborhood Centers, "Village Green," neighborhood parks, and schools. (I-7 and I-10)	X		4	
Comments:				
13.1.2 Require developments to link their internal trail system with the surrounding Sphere of Influence network.	X		3 and 4	
Comments:				
13.1.3 The Plan encourages infrastructure rights-of-ways or easements to be designed and developed to accommodate trails and bikeways where feasible and where compatible with the intended primary use. (I-47)	X		4	

Policy		Fully Complies	Partially Complies	S.P Sec. No.	N/A
Comments:					
13.1.4	The Plan includes provisions providing for joint use of SCE easement-owned rights-of-way for trails and bikeways where feasible and compatible with the intended primary use. (I-10 and I-47)	X		3 and 4	
Comments:					
13.1.5	The Plan includes provisions providing for joint use SCE's fee-owned rights-of-way for trails and bikeways where feasible and compatible with SCE's secondary land use licensing program. (I-10 and I-47)	X		3 and 4	
Comments:					
13.1.6	Work with the surrounding jurisdictions to ensure trail connections between the Sphere of Influence and other regional recreational destinations or amenities. (I-51)				X
Comments:	<i>The City will implement this General Plan policy.</i>				
14.1.1	The Plan includes measures to extensively landscape Euclid Avenue, Grove Avenue, Vineyard Avenue, Archibald Avenue, Milliken Avenue, and Edison Avenue by the use of "enhanced parkways" with landscaped medians and rights-of-way (see Figure 5-3 – SOI GPA). (I-7 and I-10)				X
Comments:	<i>The West Haven Specific Plan does not encompass the listed roadways.</i>				
14.1.2	The Plan requires that comprehensive street tree and landscape plans be established to uniquely identify parkways, neighborhoods, centers, and districts. (I-7)	X		8	
Comments:	<i>Per City master plan of streetscapes</i>				

CITY OF ONTARIO NEW MODEL COLONY SPECIFIC PLAN POLICY MATRIX

Policy	Fully Complies	Partially Complies	S.P Sec. No.	N/A
14.1.3 The Plan requires that the landscaping within the public medians and rights-of-way as well as along the private developments’ street frontage is well designed and properly maintained, minimizes water usage, and maximizes visual continuity while permitting individual expression. (I-25)	X		4 and 8	
Comments:				
14.1.4 The Plan requires that the individual developments transition their landscaping with the neighboring properties’ landscaping, thereby enhancing visual continuity along streets. (I-10)	X		4 and 8	
Comments:				
14.1.5 The Plan requires that view corridors be provided from public places towards the San Gabriel Mountains, where possible. (I-7)	X		3	
Comments:				
15.1 Historic and Cultural Resources				
15.1.1 Validate the location of pending historical resources. (I-10)	X			
Comments:	Per project EIR cultural resources study			
15.1.2 The Plan includes provisions requiring all development projects, including infrastructure construction, to conduct Phase I surveys and resource investigations in accordance with CEQA requirements to determine if additional cultural, historic, or archaeological resources are located within their area. If the development project involves the use of federal funds, conduct the study in accordance with federal requirements. File all site records, survey reports, etc. with the San Bernardino County Museum Archaeological Information Center. (I-10)	X			
Comments:	Per project EIR			

Policy		Fully Complies	Partially Complies	S.P Sec. No.	N/A
15.1.3	The Plan includes provisions requiring all development projects to conduct Phase II evaluation studies (for archaeological resources and standing structures in accordance with CEQA requirements) if necessitated by the Phase I studies' findings. If the development project will involve the use of federal funds, conduct the study in accordance with federal requirements. File all site records, survey reports, etc. with the San Bernardino County Museum Archaeological Information Center. (I-10)	X			
Comments:	<i>Per project EIR</i>				
15.1.4	The Plan includes provisions requiring development projects to propose avoidance or preservation plans for any archaeological or historic site, as necessary. (I-10)	X			
Comments:	<i>Per project EIR</i>				
15.1.5	The Plan includes provisions require new development to be compatible with adjacent archaeological sites or historical structures in terms of buffering, scale, massing, and building materials, as necessary. (I-10)	X			
Comments:	<i>Per project EIR</i>				
15.1.6	Conduct an intensive archaeological field survey under the supervision of a Society of Professional Archaeologists (S.O.P.A.) certified archaeologist for each proposed project not previously surveyed within the past ten years. A technical report following format and content guidelines proposed by the Office of Historic Preservation must be completed. (I-10)	X			
Comments:	<i>Per project EIR</i>				
15.1.7	The Plan includes provisions requiring that each project resulting in an adverse impact on a known significant resource prepare an appropriate planning approach to reduce the impact to a level of insignificance. (I-10)	X			
Comments:	<i>Per project EIR mitigation measures</i>				

CITY OF ONTARIO NEW MODEL COLONY SPECIFIC PLAN POLICY MATRIX

Policy		Fully Complies	Partially Complies	S.P Sec. No.	N/A
15.1.8	The Plan includes provisions requiring that a qualified archaeologist be retained in order to monitor the grading, identify any cultural resources that may be exposed, complete a preliminary evaluation of the resource, and recommend appropriate resource management for the treatment of the resource. (I-10)	X			
Comments:	Per adopted mitigation monitoring program				
16.1 Libraries					
16.1.1	The Plan includes provisions requiring that library site(s) be developed within the Neighborhood Centers and Town Centers, and near transit facilities, bike paths, and pedestrian paths. (I-7)	X		3	
Comments:					
16.1.2	The Plan encourages consolidation of public facilities thereby creating “mini civic centers” comprised of police station(s), library(ies), fire stations, schools, parks, and administrative offices, etc. (I-7)				X
Comments:	The City will implement this General Plan policy.				
16.1.3	Construct a minimum of 61,107 square feet library facilities in order to provide the estimated 101,845 Sphere of Influence residents with adequate library facilities based on the City’s current standard of 0.6 square feet per resident, or as modified to reflect technology. (I-10 and I-30)				X
Comments:	The City will implement this General Plan policy.				
16.1.4	The Plan encourages the installation of new technology including a fiber optic network for telecommunications. (I-22)	X		5	
Comments:					
16.1.5	The Plan encourages the joint use of school libraries and public library facilities. (I-47)				X
Comments:	The City will implement this General Plan policy.				

Policy		Fully Complies	Partially Complies	S.P Sec. No.	N/A
PART IV NATURAL RESOURCES					
17.1 Aggregate Resources					
17.1.1 Identify the locations of aggregate resources and coordinate their location with the appropriate land use designations. (I-19 and I-23)		X			
Comments:	Per project EIR				
18.1 Biological Resources					
18.1.1 Work with and encourage the Army Corps of Engineers, Chino Basin SAPA, and County Flood Control to retain a minimum of 160 acres of surface water in the El Prado Basin. This water shall serve as the habitat mitigation for waterfowl to offset the discontinued use of State mandated dairy manure water retention basins. (I-36 and I-47)					X
Comments:	The City will implement this General Plan policy.				
18.1.2 Ensure that development projects proposed for areas that support and retain waterfowl and raptor habitat: <ul style="list-style-type: none">incorporate fences, walls, vegetative cover, or other measures to buffer waterfowl areas from the built environment;locate and design roads and utilities in such a manner that they will not conflict or impact habitat areas; andpermit only the following uses:<ul style="list-style-type: none">educational and research facilities (excluding buildings);passive (non-motorized, non-consumptive) recreation;trails on public land(s) if located outside of a undeveloped buffer zone;fish and wildlife management activities; andflood control projects where no other viable methods are available to protect the public safety. (I-7 and I-10)					X

Policy		Fully Complies	Partially Complies	S.P Sec. No.	N/A
Comments:	<i>The City will implement this General Plan policy.</i>				
18.1.3	<p>The Plan includes measures to ensure that development projects that incorporate onsite mitigation for the loss of existing waterfowl and raptor habitat:</p> <ul style="list-style-type: none"> are reviewed by a City-approved biologist who conducts an onsite assessment to determine whether the mitigation is sufficient based upon the quality, location, or size of the area to be lost; include a Biological Assessment Report that addresses the proposed project's impact on state and federally listed and candidate plants and animals; California Department of Fish and Game Special Animals; waterfowl or raptor habitat and any other special interest species or communities identified in the General Plan Analyses of Existing Conditions and Trends Report, or those hereafter named by state or federal trustee agencies; assess project conformance to specific habitat objectives described above; identify mitigation measures necessary to eliminate significant adverse impacts to sensitive biological resources; and define a program for monitoring and evaluating the effectiveness of the specified mitigation measures. (I-7 and I-10) 	X			
Comments:	<i>Per project EIR biology study</i>				
18.1.4	Periodically update the Biological Habitat Map (see Figure 6-5 – SOI GPA) and data base to maintain current information regarding waterfowl and raptor habitat. (I-6 and I-41)				X
Comments:	<i>The City will implement this General Plan policy.</i>				
18.1.5	The Plan includes sufficient technical data to enable an adequate assessment of the potential for impacts on biological resources. Such technical data shall include species lists, habitat use, acreage of habitat, and descriptions of any vegetation. (I-7 and I-10)	X			
Comments:	<i>Per project EIR biology study</i>				

Policy	Fully Complies	Partially Complies	S.P Sec. No.	N/A
18.1.6 The Plan assesses impacts on local biological resources and recommend appropriate mitigation measures, if necessary to account for specific development characteristics or site conditions that are not adequately addressed by the Sphere of Influence General Plan Environmental Impact Report. (I-7 and I-10)	X			
Comments: <i>Per project EIR biology study</i>				
18.1.7 The Plan includes provisions encouraging development plans take all reasonable measures to avoid creating significant impacts. (I-7 and I-10)	X			
Comments: <i>Per project EIR</i>				
18.1.8 The Plan includes provisions encouraging development plans take all reasonable measures to avoid altering the biological integrity. Reasonable measures may include but are not limited to vegetative restoration, control of alien plants and animals, and use of landscaping buffers. (I-7 and I-10)	X			
Comments: <i>Per project EIR</i>				
18.1.9 The Plan includes provisions for enhancing the ponded areas adjacent to the flood control channel (i.e., planting native trees to serve as buffers). (I-36)	X			
Comments: <i>Per project EIR</i>				
18.1.10 The Plan includes provisions requiring dedicated open space easements as a condition of approval for development projects proposed adjacent to waterfowl and raptor habitat areas that are voluntarily retained in the Sphere of Influence. These open space easements shall assure that the biological habitats are buffered and protected from degradation and shall be used only for passive recreational/educational purposes. (I-7 and I-10)	X			
Comments: <i>Per project EIR</i>				

CITY OF ONTARIO NEW MODEL COLONY SPECIFIC PLAN POLICY MATRIX

Policy		Fully Complies	Partially Complies	S.P Sec. No.	N/A
11.3.9	Ensure that development projects located adjacent to waterfowl or raptor habitat areas that are voluntarily retained in the Sphere of Influence: <ul style="list-style-type: none">• Maintain a 100-foot buffer (minimum) from the edge of the habitat on the subject property;• maintain connection to other preserved habitats, where they exist; and• dedicate open space easements to the City, homeowner associations, or other responsible party. (I-7 and I-10)	X			
Comments:	Per project EIR				
18.1.12	Establish an onsite “Wildlife Habitat” or Waterfowl and Raptor Conservation Area (WRCA) in the areas adjacent to the Chino Basin Flood Control Ponds located to the south of Chino Avenue, west of Archibald Avenue, north of Scafer and east of Whispering Lakes Lane consisting of approximately 145 acres adjacent to the 85 acres of existing county-owned detention basins. (I-6) Refer to p. 6-27, SOIGPA for complete discussion on the two approaches to establishing the WRCA.				X
Comments:	The City will implement this General Plan policy.				
18.2 Recovery of Delhi sands flower-loving fly					
18.2.1	Monitor the efforts of the Department of Fish and Wildlife to study the recovery of the Federally listed Delhi sands flower-loving fly. Assess the impacts of recovery recommendations for development in the Sphere of Influence. (I-5 and I-47)	X			
Comments:	Per project EIR				

Policy		Fully Complies	Partially Complies	S.P Sec. No.	N/A
18.2.2	The City shall cooperate with the U.S. Fish and Wildlife Service in the following ways to mitigate potential impact to the DSFLF: <ul style="list-style-type: none">cooperate with USFWS to ensure, through the Specific Plan Process, that potential recovery areas are appropriately mitigated;establish a standard for buffers for protecting DSFLF restoration areas, in cooperation with USFWS; andwork with rights-of-way owners and USFWS to explore the possibility of creating DSFLF habitat within these undeveloped strips. (I-5 and I-47)	X			
Comments:	Per project EIR				
18.3 Increased public awareness of local biological resources					
18.3.1	Sponsor or co-sponsor “balanced” educational programs that: <ul style="list-style-type: none">promote awareness of local biological resources;inform about protection and preservation programs;foster community attitudes and behaviors that help protect local plants and wildlife; andencourage community involvement in protection programs. (I-50)				X
Comments:	The City will implement this General Plan policy.				
PART IV HAZARDS					
19.1 Geologic and Seismic Hazards					
19.1.1	The Plan includes requirements to validate the presence of unstable soils, areas of liquefaction potential, unique geological features, and shallow water tables.	X			
Comments:	Per project EIR				
19.2.1	Identifies the location and type of utilities within the area and identifies emergency procedures in case of breaks, rupture, or other disruption.	X			
Comments:	Per project EIR				

CITY OF ONTARIO NEW MODEL COLONY SPECIFIC PLAN POLICY MATRIX

Policy		Fully Complies	Partially Complies	S.P Sec. No.	N/A
19.2.2	Identifies the location and type of utilities within the area and identify emergency procedures in case of breaks, rupture, other disruption.	X			
Comments:	Per project EIR				
19.3.1	Determine portions of the Sphere of Influence are subject to subsidence.	X			
Comments:	Per project EIR				
19.3.2	Update planning (including setbacks requirements), building (including design considerations), grading, and engineering requirements, as necessary, to protect life and property located near potential subsidence and fissure zones.				X
Comments:	The City will implement this General Plan policy.				
20.1 Protection from Fire Hazards					
20.1.1	Requires two viable points of ingress and egress from development projects.	X		3 and 4	
Comments:					
20.2.1	The Plan includes procedures to ensure that manure storage practices are not conducive to the generation of fires due to spontaneous combustion.	X			
Comments:	Per project EIR				
21.1 Dust, Wind and Blow Sand					
21.1.1	The Plan requires that structures be sited and designed to prevent adverse funneling of wind onsite and on adjacent properties.	X			
Comments:	Per project EIR				

Policy		Fully Complies	Partially Complies	S.P Sec. No.	N/A
21.2.1	The Plan requires provisions to construction for adherence to Soil Erosion Control Area or City-mandated dust control programs.	X			
Comments:	Per Project EIR				
21.2.2	The Plan requires that technical information and mitigation methods examples, regarding wind blown sand, available to the general public.	X			
Comments:	Per project EIR				
21.2.3	The Plan provides provisions to coordinate with other jurisdictions to maximize wind blown sand control planning.	X			
Comments:	Per project EIR				
22.1 Soils					
22.1.1	The Plan requires that geologic deposit technical information, erosion potential identification methods, and erosion control examples are made available to developers.	X			
Comments:	Per project EIR				
22.1.2	The Plan requires that soils engineering problem information, identification methods, and mitigation method examples are made available to developers.	X			
Comments:	Per project EIR				
22.1.3	The Plan includes provisions requiring proposed development projects to determine if the project would be located in or near areas with significant erosion potential or soil engineering problems. Require proposed project applications to include a detailed discussion regarding the types of soil and locations, erosion potential or soil engineering problems, and erosion control plans. Mitigation plans must address methods to be used during all phases of project development, implementation, and operation.	X			

Policy		Fully Complies	Partially Complies	S.P Sec. No.	N/A
Comments:	Per project EIR				
22.1.4	The Plan requires establishment and implementation of a procedure to be used to evaluate the suitability of developer proposed erosion control methods.	X			
Comments:	Per project EIR				
22.1.5	The Plan includes provisions requiring development applicants to certify that all deleterious materials, particularly organic residue from dairy, farming, or agricultural activity, have been removed, properly disposed, and will not impact the development during the project’s life.	X			
Comments:	Per project EIR				
22.1.6	The Plan requires creation (pulled together from existing materials) of a Grading and Geotechnical Investigation Standards manual that will be available to developers and consultants in order to ensure the minimum proper soils engineering and engineering geologic study for all sites where grading will occur. Together these standards and policies should effectively mandate proper studies before development approval, in which grading, foundations, and slope stability would be analyzed and any potential hazards identified. Mitigation of the potential hazards would occur through the proper application of recommendations arising from these studies. Topics shall include but not necessarily be limited to soils engineering and foundations, slope stability, erosion, liquefaction/dynamic settlement, shallow groundwater, and fault location/activity. This manual shall be available at the permit stage prior to initial feasibility and design studies in order to enhance (streamline) the development review and environmental review processes.	X			
Comments:	Per project EIR				
22.2.1	Determine if the manure stockpiles have the potential to create a nuisance, structural, or groundwater contamination problems. If so, require proper mitigation.	X			
Comments:	Per project EIR				
23.1 Hazardous Materials & Waste					

Policy		Fully Complies	Partially Complies	S.P Sec. No.	N/A
23.1.1	Require phase I Environmental Assessments for the presence of hazardous materials prior to the demolition of any buildings or the construction of new development on any properties within the Sphere of Influence. If hazardous materials are found, implement measures for their safe removal or containment, meeting applicable regulatory standards, prior to demolition of affected structures and/or construction on the affected areas.	X			
Comments:	Phase I study completed by developer				
23.1.3	Require projects to comply with policies set forth in the City of Ontario General Plan regarding the handling, transporting, treating generating and storage of hazardous materials.	X			
Comments:	Per project EIR				
24.1 Noise					
24.1.1	Monitor and update available data regarding the community’s existing and projected ambient and stationary noise levels as show on Figures 7-4 and 7-6 of the SOI GPA.				X
Comments:	The City will implement this General Plan policy.				
24.2.1	Site housing, health care facilities, schools, libraries, religious facilities, and other “noise sensitive” land uses in areas where existing or future noise levels are below an Ldn of 60 (dB(A) exterior and an Ldn of 45 dB(A) interior limits.	X		3	
Comments:					
24.2.2	The Plan permits the locations of commercial, industrial, and recreational uses in areas where the ambient noise levels exceed an Ldn of 60 dB(A), if they area able to reduce the interior noise levels to within the 45 dB(A) Ldn level.	X			
Comments:	Per project EIR noise study				

CITY OF ONTARIO NEW MODEL COLONY SPECIFIC PLAN POLICY MATRIX

Policy	Fully Complies	Partially Complies	S.P Sec. No.	N/A
24.2.3 The Plan requires that <ul style="list-style-type: none"> Dining and other high noise-generating entertainment uses in commercial areas are not located directly adjacent to any residences, schools, health-care facilities, or other noise sensitive” land uses; and The entertainment and restaurant/bar uses’ outdoor dining areas, waiting areas, entries, and kitchens are located in such a manner that the noise levels emanating from these uses are not discernible from ambient noise levels at a distance of fifty (50) feet from the establishment in which it is being conducted or within ten (10) feet of any residence (whichever is more restrictive). 	X		9	
Comments:				
24.2.4 The Plan requires that the facilities for active recreational uses that are likely to draw cheering crowds, elicit loud play, or have amplified game announcements (i.e., stadiums, soccer fields, tennis courts, basketball courts, etc) be located within the park’s interior and away from surrounding residential and “noise sensitive” uses.				X
Comments:	<i>The General Plan does not propose such uses within the West Haven Specific Plan.</i>			
24.2.5 The Plan requires educational, recreational, commercial, and industrial land uses (including educational campuses, parks, stadiums, and public event facilities) be designed in such a manner that: <ul style="list-style-type: none"> Locate and orient vehicle access points away from residential and/or noise sensitive parcels. Locate loading and shipping facilities away from adjacent noise sensitive uses; Incorporate structural building materials that mitigate sound transmission; Minimize the use of outside speakers and amplifiers; Configure interior spaces to minimize sound amplification and transmission; and Incorporate fences, walls, landscaping and other noise buffers and barriers between incompatible uses, as appropriate. 				X
Comments:	<i>The General Plan does not propose such uses within the West Haven Specific Plan.</i>			

Policy		Fully Complies	Partially Complies	S.P Sec. No.	N/A
24.2.6	<p>The Plan requires mixed-use buildings:</p> <ul style="list-style-type: none"> Be constructed soundly to prevent adverse noise transmission between differing uses or tenants located in the same commercial structure and individual dwelling units in multi-family residential structures; and Designed for concurrent commercial and residential and uses to minimize to the greatest degree practicable (through design and construction techniques) the transfer or transmission of noise and vibration from the commercial land use to the residential land use, 				X
Comments:	<i>The General Plan does not propose such uses within the West Haven Specific Plan.</i>				
24.2.7	<p>The Plan requires that, prior to the issuance of grading permits, an Acoustical Analysis Report be submitted to the City Engineer by the project developer. The report shall:</p> <ul style="list-style-type: none"> Describe the cumulative effect of road noise on surrounding land uses and recommend mitigation measures; describe in detail the interior and exterior noise levels for residential uses on the site and the specific design and mitigation features to ensure compliance with the City's noise criteria of 65 dB(A) CNEL for outdoor living areas and 45dB(A) CNEL in habitable rooms; specify the noise barriers' height, location, and types capable of achieving the desired mitigation affect; and identify those residential lots that may require mechanical ventilation to achieve interior noise standards. When the operable doors and windows are open for homes facing these roadways, the interior 45 dB(A) CNEL interior noise limit for these units may be exceeded. Therefore, a "windows closed" condition may be required for these units. Any proposed mechanical ventilation must meet the requirements of the Uniform Building Code (UBC) standard. It should be noted that the windows facing some roadways may be openable windows, but the homeowners would have the option to close the windows and still obtain adequate ventilation through the use of a mechanical ventilation system. This mechanical ventilation system shall supply two air changes per hour to each habitable room, including 20 percent (one-fifth) fresh make-up air obtained directly form the outdoors. The fresh air inlet duct shall be of sound attenuating construction and shall consist of a minimum of ten feet of straight or curved duct or six feet plus one sharp 90 degree bend. The City Engineer shall ensure that the Acoustical Analysis Report identifies any requirements for mechanical ventilation for individual onsite residential units. (I-7 and I-10) 	X			

CITY OF ONTARIO NEW MODEL COLONY SPECIFIC PLAN POLICY MATRIX

Policy		Fully Complies	Partially Complies	S.P Sec. No.	N/A
Comments:	<i>Per project EIR noise study</i>				
24.2.8	The Plan requires that all prospective owners and occupants of residential units be formally notified prior to purchase, lease, or rental, that certain units (without windows and doors closed), and outdoor areas could be subject to noise levels above City standards for residential uses. Such notification shall be in language approved by the City Planning Department, and shall be formalized in written Covenants, Conditions, and Restrictions (CC&Rs) recorded on the title of each residential lot in the project. In addition, each advertisement, solicitation, and sales brochure or other literature regarding the project shall contain the approved notification language. (I-7 and I-10)	X			
Comments:	<i>Per Project EIR recommended mitigation measures.</i>				
24.2.9	The Plan limits construction in the Sphere of Influence to the hours of 7:00 AM to 7:00 PM Monday through Saturday, and prohibited on Sundays and Federal holidays. (I-7 and I-10)	X			
Comments:	<i>Per City noise ordinance</i>				
24.2.10	The Plan requires all project construction vehicles or equipment, fixed or mobile, be equipped with properly operating and maintained muffler. (I-7 and I-10)	X			
Comments:	<i>Per City noise ordinance</i>				
24.2.11	The Plan requires that stockpiling and/or vehicle staging areas be located as far as practical from existing residential units on and off the project site. (I-7 and I-10)	X			
Comments:	<i>Per City requirements</i>				
24.2.12	The Plan requires to, whenever feasible, schedule the noisiest construction operations to occur together to avoid continuing periods of the greatest annoyance. (I-7 and I-10)	X			
25.1 Air Quality					

Policy	Fully Complies	Partially Complies	S.P Sec. No.	N/A
<p>25.1.1 Continue to enforce the following:</p> <ul style="list-style-type: none"> • During all construction activities, construction contractors shall use low emission mobile construction equipment where feasible to reduce the release of undesirable emissions. • During all construction activities, construction contractors shall encourage rideshare and transit programs for project construction personnel to reduce automobile emission. • During all grading and site disturbance activities, construction contractors shall water active sites at least twice a day, and clean construction equipment in the morning and/or evening to reduce particulate emissions and fugitive dust. • During all construction activities, construction contractors shall, as necessary, wash truck tires leaving the site to reduce the amount of particulate matter transferred to paved streets as required by SCAQMD Rule 403. • During all construction activities, construction contractors shall sweep on and offsite streets if silt is carried to adjacent public thoroughfares, as determined by the City Engineer to reduce the amount of particulate matter on public streets. • During all construction activities, construction contractors shall limit traffic speeds on all unpaved road surfaces to 15 miles per hour or less to reduce fugitive dust. • During grading and all site disturbance activities, at the discretion of the City Planner, construction contractors shall suspend grading operations during first and second stage smog alerts to reduce fugitive dust. • During grading and all site disturbance activities, at the discretion of the City Planner, construction contractors shall suspend all grading operations when wind speeds (including instantaneous gusts) exceed 25 miles per hour to reduce fugitive dust. • During all construction activities, the construction contractors shall maintain construction equipment engines by keeping them tuned. 	X			

Policy		Fully Complies	Partially Complies	S.P Sec. No.	N/A
<ul style="list-style-type: none"> During all construction activities, the construction contractors shall use low sulfur fuel for stationary construction equipment as required by AQMD Rules 431.1 and 431.2 to reduce the release of undesirable emissions. During all construction activities, the construction contractors shall use existing onsite electrical power sources to the maximum extent practicable. Where such power is not available, the Contractor shall use clean fuel generators during the early stages of construction to minimize or eliminate the use of portable generators and reduce the release of undesirable emissions. During all construction activities, the construction contractors shall use low emission, on site stationary equipment (e.g., clean fuels) to the maximum extent practicable to reduce emissions, as determined by the City Engineer. During all construction activities, the construction contractors, in conjunction with the City Engineer, shall locate construction parking to minimize traffic interference on local roads. During all construction activities, the construction contractors shall ensure that all trucks hauling dirt, sand, soil, or other loose materials are covered or should maintain at least two feet of freeboard (i.e., minimum vertical distance between top of the load and the top of the trailer) in accordance with the requirements of the California Vehicle Code Section 23114 to reduce spilling of material on area roads. (I-14) 					
Comments:	<i>To be included in project mitigations and/or conditions of approval on the tentative tract maps</i>				