



January 9, 2009

Mr. Tim Stapleton  
David Evans and Associates  
4200 Concours, Ste 200  
Ontario, 91764

**Subject: The Guasti Plaza Specific Plan Amendment- Initial Study/ Notice of Preparation of Environmental Assessment**

Dear Mr. Stapleton,

Thank you for your Notice of Preparation to do an Environmental Assessment for the Guasti Plaza Specific Plan Amendment. Omnitrans supports the plan amendment to add residential units to the Guasti Specific Plan Area. Intensified land uses around transit stations and corridors are recommended. We look forward to working with you and your client to improve this Specific Planning Area and to deliver efficient mobility options for the community.

This project may also want consider some other important transit developments for the City of Ontario such as the proposed Metro Gold Line extension and the California high-speed rail station. This project is in fairly close proximity to the future stations.

1. **Service Area:** Omnitrans currently serves the Guasti Plaza Specific Planning Area.
2. **Existing Bus Routes:** The Guasti Plaza Specific Planning Area is served by route 61 on Archibald Avenue, with 15-minute frequencies. Bus Stops are located on Archibald Avenue, on the far sides of the New Guasti Road Intersection.
3. **Existing Capacity:** Route 61 has above standard performance, at 27.7 passengers per revenue hour. It is the busiest route in the system.
4. **Future Expansion:** The Guasti Plaza Specific Planning Area could see increased transit service to it, if the intensities of land uses in the Planning Area warrant it.
5. **Project Infrastructure needs:**
  - a. **Bus Turnouts-** Turnouts are necessary for busses on the far side of New Guasti Road on Archibald Avenue (Northbound and southbound).

b. **Bus Stop Amenities** - In order to better accommodate existing and future riders at the site, the following amenities are requested at the bus stops:

- i. Passenger Landing Areas
- ii. Pedestrian Connections
- iii. Curb Ramps
- iv. Shelters with lighting
- v. Bus Benches
- vi. Trash Receptacles

c. **Pedestrian Traffic Signals-** A signalized pedestrian crosswalk is needed at the New Guasti Road and Archibald Avenue intersection to address passenger safety to and from the bus stops from the Specific Plan Area.

6. **Impacts and Mitigation:** The impacts upon transit associated with the increase in population and activity in the Specific Plan area could be mitigated with increased bus trip frequencies and services. The infrastructure items mentioned in #5 should be considered as recommended transit impact mitigation measures.

The planned Bus Rapid Transit (BRT) corridor for San Bernardino Avenue could provide additional transit service improvements. The infrastructure items mentioned in #5 would also help to accommodate a future BRT route.

7. **Other Information:** Additional information about the bus stop design guidelines can be found on our website at: [http://www.omnitrans.org/about/bus\\_stop.shtml](http://www.omnitrans.org/about/bus_stop.shtml)

Thank you for the opportunity to comment.

Sincerely,



Brett Clavio

Attachment: Ontario Ridership Data  
Photos: Bus Stops

## Bus Stops



*Archibald Northbound*



*Archibald Southbound*



# Route 61 Performance by Stop in Ontario

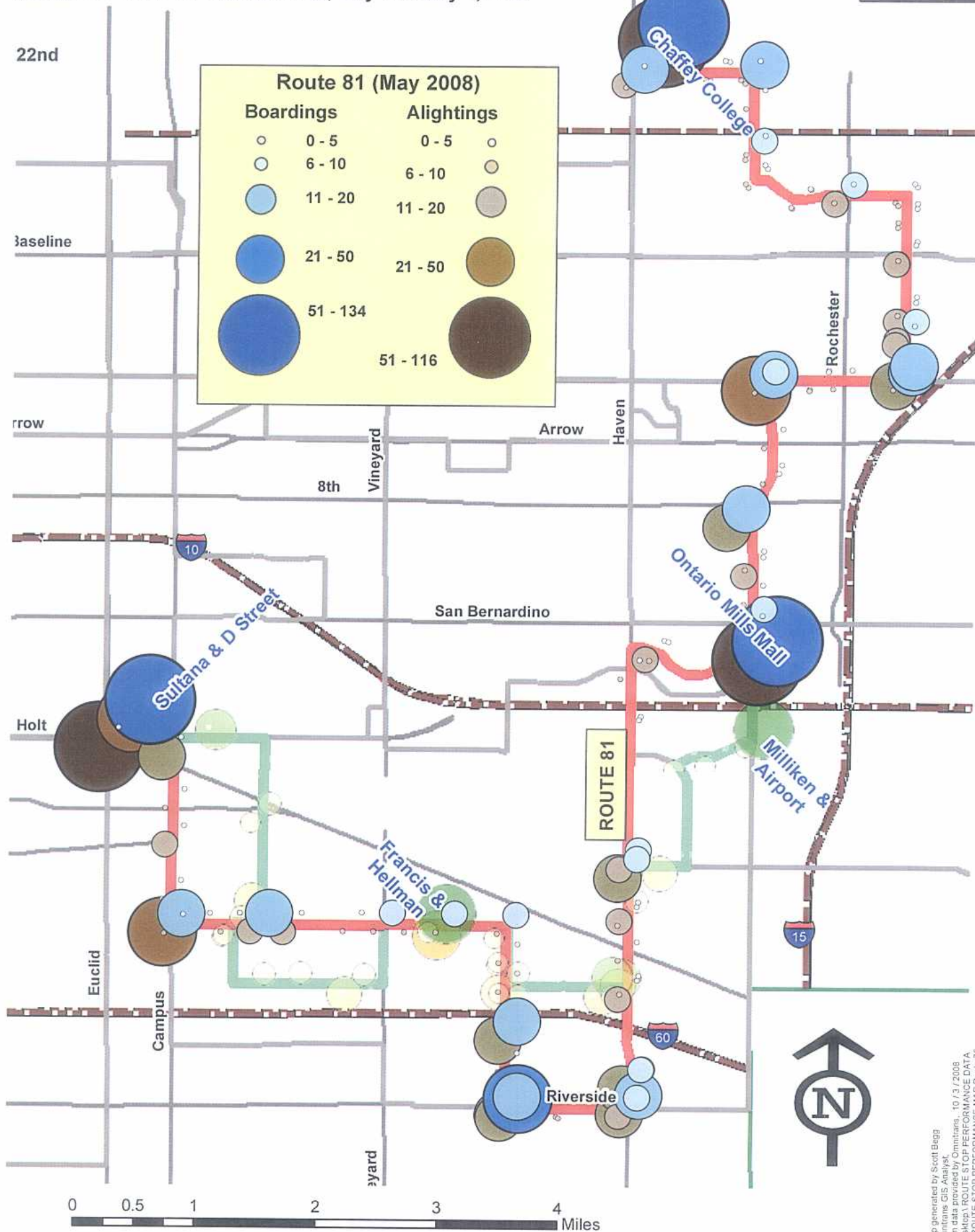
Total Boardings and Alightings Over Three Months (July to October, 2008)



# Routes 75 and 81 Compared

Route 71: Average by Day, January to May, 2007

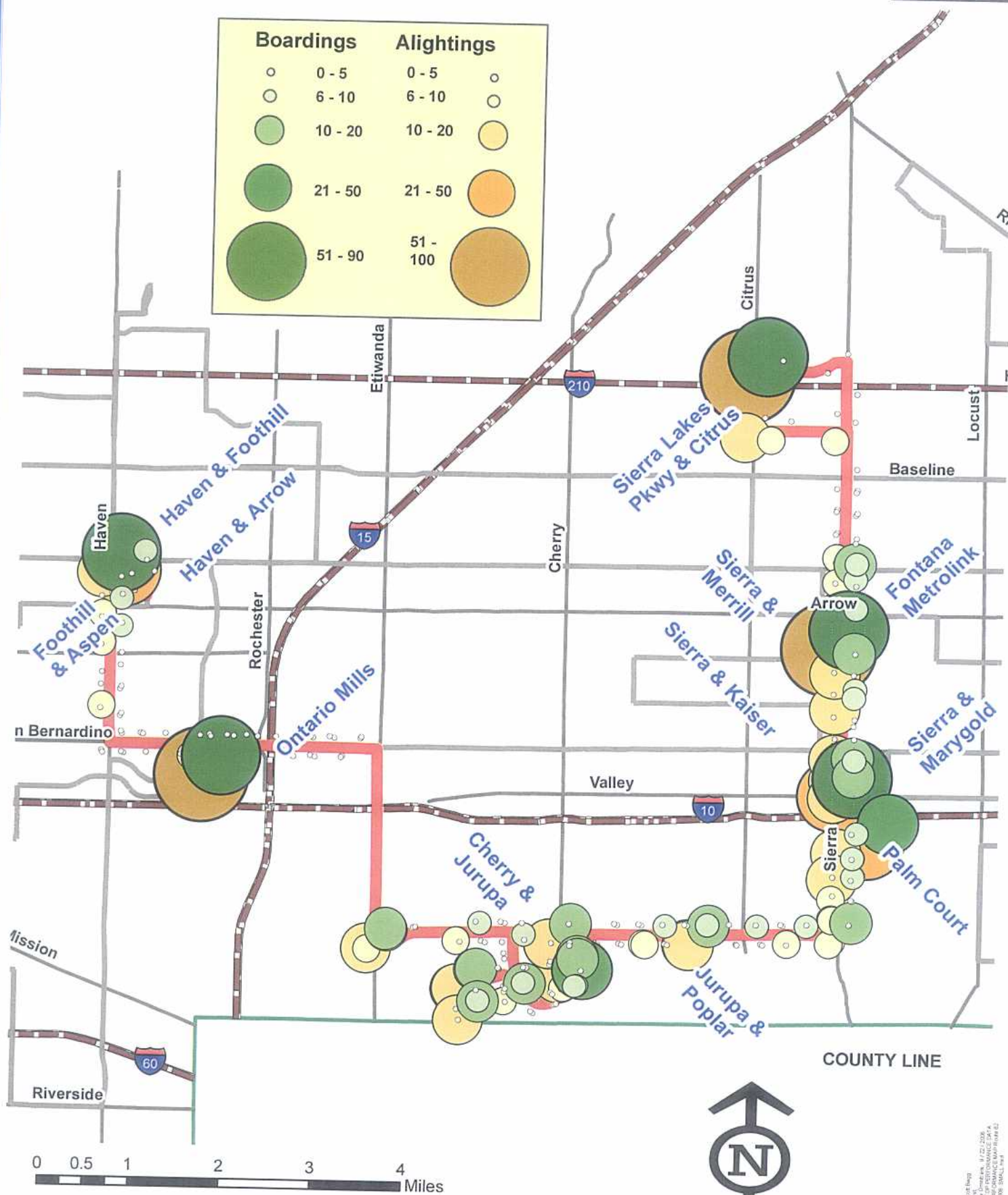
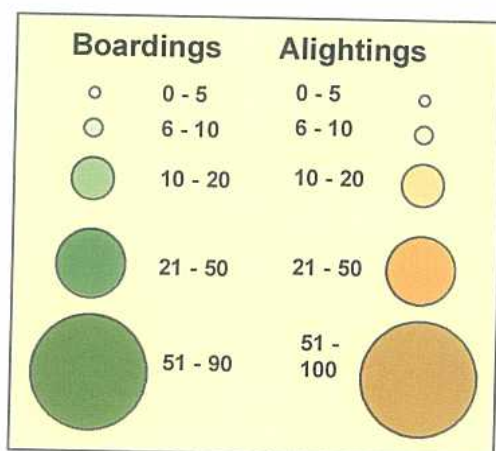
Route 81: Three Blocks Summed, May 5 to May 7, 2008





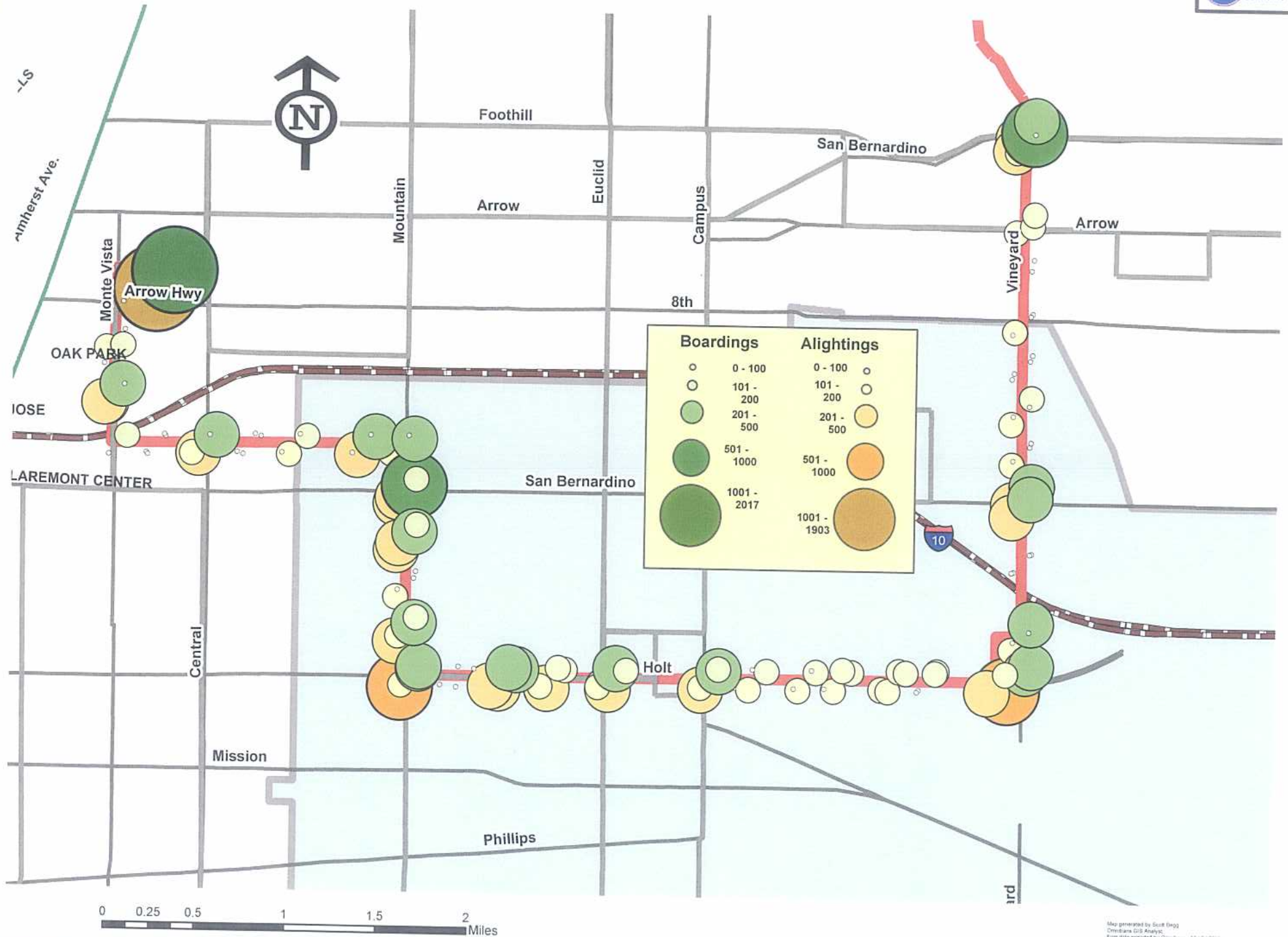
# Route 82 Weekday Performance by Stop:

March 4 to March 12, 2008 (1 week, 8 blocks total)



# Route 80 Performance by Stop in Ontario

## Total Boardings and Alightings Over Two Months (July to September, 2008)





For Internal Use Only  
**A.M. PEAK-PERIOD (PEAK DIRECTION) BOARDINGS & ALIGHTINGS**  
**September 2008**

	No. Valid Samples	AVG DAILY		AVG DAILY		Last Sampled
		Brdg	Alight	% on	% off	
<b>RIVERSIDE</b>						
Riverside	1	496	0	18.6%	0.0%	Sep-08
Pedley	1	231	0	8.6%	0.0%	Sep-08
Ontario	1	424	4	15.9%	0.1%	Sep-08
Downtown Pomona	1	234	15	8.8%	0.6%	Sep-08
Industry	1	1191	17	44.6%	0.6%	Sep-08
Montebello	1	96	492	3.6%	18.4%	Sep-08
LAUS (estimate)	--	0	2144	0.0%	80.2%	
SUB-TOTAL		2,672	2,672	100.0%	100.0%	
<b>ORANGE COUNTY</b>						
Oceanside	1	489	0	13.0%	0.0%	Sep-08
San Clemente	1	140	6	3.7%	0.2%	Sep-08
San Juan Capistrano	2	46	1	1.2%	0.0%	Sep-08
Laguna Niguel/Mission Viejo	1	235	49	6.3%	1.3%	Sep-08
Irvine	1	453	94	12.1%	2.5%	Sep-08
Tustin	1	377	106	10.0%	2.8%	Sep-08
Santa Ana	1	210	148	5.6%	3.9%	Sep-08
Orange	1	262	86	7.0%	2.3%	Sep-08
Anaheim	1	284	128	7.6%	3.5%	Sep-08
Fullerton	1	635	107	16.9%	2.8%	Sep-08
Buena Park	1	345	7	9.2%	0.2%	Sep-08
Norwalk/Santa Fe Spr.	1	270	15	7.2%	0.4%	Sep-08
Commerce	1	12	65	0.3%	1.7%	Sep-08
LAUS (estimate)	--	0	2946	0.0%	78.4%	
SUB-TOTAL		3,758	3,758	100.0%	100.0%	
<b>INLAND EMPIRE</b>						
San Bernardino	1	130	-	5.1%	0.0%	Sep-08
Riverside-Downtown	1	477	-	18.8%	0.0%	Sep-08
Riverside-La Sierra	1	567	-	22.4%	0.0%	Sep-08
North Main - Corona	1	673	-	26.6%	0.0%	Sep-08
West Corona	1	483	-	19.1%	0.0%	Sep-08
Anaheim Canyon	1	77	334	3.0%	13.2%	Sep-08
Orange	1	44	512	1.7%	20.2%	Sep-08
Santa Ana	1	25	467	1.0%	18.5%	Sep-08
Tustin	1	15	531	0.6%	21.0%	Sep-08
Irvine	1	18	515	0.7%	20.4%	Sep-08
Laguna Niguel	1	8	67	0.3%	2.6%	Sep-08
San Juan Capistrano	1	7	12	0.3%	0.5%	Sep-08
San Clemente	1	6	22	0.2%	0.9%	Sep-08
Oceanside	1	0	70	0.0%	2.8%	Sep-08
(Balancing Entry)*		0				
SUB-TOTAL		2,530	2,530	100.0%	100.0%	
<b>91-LA</b>						
Riverside Downtown	1	159	0	13.1%	0.0%	Sep-08
La Sierra	1	201	9	16.5%	0.7%	Sep-08
North Main - Corona	1	300	0	24.7%	0.0%	Sep-08
West Corona	1	154	3	12.7%	0.2%	Sep-08
Fullerton	1	190	186	15.6%	15.3%	Sep-08
Buena Park	1	102	33	8.4%	2.7%	Sep-08
Norwalk/Santa Fe Spr.	1	109	209	9.0%	17.2%	Sep-08
LAUS (estimate)	--	0	775	0.0%	63.8%	
SUB-TOTAL		1,215	1,215	100.0%	100.0%	
<b>TOTAL</b>		<b>19,981</b>	<b>19,981</b>			

\* The "Balancing Entry" is used to equalize boardings and alightings on the IE/OC route. The entry is ratioed throughout the alighting stations from Ana Cyn, Orange, Santa Ana, Tustin, Irvine, Laguna Niguel, San Juan Capistrano, San Clemente and Oceanside or boarding stations from San Bernardino, Riverside, La Sierra, Corona Main and West Corona.



**METROLINK PASSENGER TRIPS**  
**Month of September 2008**

YR-MO	DAY	VENTURA COUNTY LINE			ANTELOPE VALLEY LINE			SAN BERNARDINO LINE			BURBANK TURNS			RIVERSIDE LINE			ORANGE COUNTY LINE			INLAND EMPIRE/OC LINE			RIV-FULLERTON-LA LINE			TOTAL SYSTEM		
08	September	Inbd	Outbd	Total	Inbd	Outbd	Total	Inbd	Outbd	Total	Inbd	Outbd	Total	Inbd	Outbd	Total	Inbd	Outbd	Total	Southbnd	Northbnd	Total	Inbd	Outbd	Total	Inbd	Outbd	Total
	2	2,142	2,183	4,325	4,256	4,006	8,262	7,129	6,894	14,023	567	257	824	2,663	2,546	5,209	4,272	3,808	8,080	2,470	2,703	5,173	1,191	1,462	2,653	24,690	23,859	48,549
	3	2,259	2,490	4,749	4,197	3,827	8,024	7,070	6,848	13,918	634	265	899	2,854	2,672	5,526	4,406	4,258	8,664	2,665	2,786	5,451	1,111	1,319	2,430	25,196	24,465	49,661
	4	2,414	2,588	5,002	4,070	4,077	8,147	6,939	6,826	13,765	650	281	931	3,014	2,948	5,962	4,601	3,840	8,441	2,675	2,714	5,389	1,221	1,391	2,612	25,584	24,665	50,249
	5	2,097	2,294	4,391	4,086	3,856	7,942	7,134	6,991	14,125	534	259	793	2,599	2,360	4,959	3,968	3,312	7,280	2,613	2,490	5,103	1,068	1,230	2,298	24,099	22,792	46,891
Sat	6			0	1,303	1,253	2,556	1,953	2,108	4,061			0			0	459	382	841	406	443	849			0	4,121	4,186	8,307
Sun	7			0	558	685	1,243	1,259	1,382	2,641			0			0	343	404	747	274	332	606			0	2,434	2,803	5,237
	8	2,176	2,351	4,527	4,030	4,064	8,094	6,952	6,895	13,847	545	255	800	2,752	2,577	5,329	4,238	3,631	7,869	2,476	2,575	5,051	1,107	1,335	2,442	24,276	23,683	47,959
	9	2,260	2,461	4,721	4,119	3,850	7,969	6,943	7,132	14,075	561	285	846	2,783	2,680	5,463	4,671	4,275	8,946	2,704	2,822	5,526	1,107	1,367	2,474	25,148	24,872	50,020
	10	2,189	2,410	4,599	4,122	3,873	7,995	7,103	6,682	13,785	602	254	856	3,077	2,716	5,793	4,412	3,806	8,218	2,483	2,927	5,410	1,192	1,373	2,565	25,180	24,041	49,221
	11	2,148	2,491	4,639	4,174	4,017	8,191	7,055	7,403	14,458	573	270	843	2,751	2,535	5,286	4,317	3,938	8,255	2,579	2,510	5,089	1,130	1,361	2,491	24,727	24,525	49,252
	12	1,959	2,163	4,122	4,143	3,718	7,861	6,975	6,894	13,869	525	262	787	2,577	2,383	4,960	3,915	3,552	7,467	2,402	2,500	4,902	950	1,250	2,200	23,446	22,722	46,168
Sat	13			0	1,004	921	1,925	1,967	1,986	3,953			0			0	306	370	676	344	361	705			0	3,621	3,638	7,259
Sun	14			0	356	705	1,061	1,133	1,071	2,204			0			0	258	255	513	157	196	353			0	1,904	2,227	4,131
	15	1,605	1,903	3,508	3,794	3,727	7,521	6,538	6,698	13,236	525	254	779	2,516	2,252	4,768	4,072	3,408	7,480	2,489	2,427	4,916	1,179	1,341	2,520	22,718	22,010	44,728
	16	1,654	1,857	3,511	3,685	3,729	7,414	6,927	6,915	13,842	560	229	789	2,978	2,652	5,630	4,332	3,526	7,858	2,640	2,530	5,170	1,023	1,452	2,475	23,799	22,890	46,689
	17	1,800	1,980	3,780	3,801	3,454	7,255	7,083	7,464	14,547	572	255	827	2,744	2,745	5,489	4,184	3,575	7,759	2,574	2,544	5,118	1,111	1,334	2,445	23,869	23,351	47,220
	18	1,898	2,296	4,194	3,594	3,470	7,064	6,788	7,129	13,917	533	251	784	2,618	2,405	5,023	4,205	3,639	7,844	2,639	2,552	5,191	1,185	1,229	2,414	23,460	22,971	46,431
	19	1,833	2,160	3,993	3,867	3,449	7,316	6,570	7,285	13,855	449	273	722	2,387	2,412	4,799	3,773	3,295	7,068	2,357	2,318	4,675	1,150	1,238	2,388	22,386	22,430	44,816
Sat	20			0	1,141	975	2,116	2,019	2,036	4,055			0			0	293	326	619	411	383	794			0	3,864	3,720	7,584
Sun	21			0	526	594	1,120	1,168	1,162	2,330			0			0	324	564	888	171	153	324			0	2,189	2,473	4,662
	22	1,709	2,153	3,862	3,765	3,838	7,603	6,575	6,890	13,465	540	249	789	2,508	2,478	4,986	4,396	3,557	7,953	2,503	2,638	5,141	1,148	1,251	2,399	23,144	23,054	46,198
	23	2,040	2,406	4,446	3,885	3,557	7,442	6,946	7,136	14,082	572	257	829	2,788	2,795	5,583	4,160	3,654	7,814	2,612	2,665	5,277	1,175	1,298	2,473	24,178	23,768	47,946
	24	2,191	2,369	4,560	3,858	3,388	7,246	6,903	7,220	14,123	485	267	752	2,790	2,928	5,718	4,107	3,723	7,830	2,590	2,671	5,261	1,201	1,332	2,533	24,125	23,898	48,023
	25	1,984	2,207	4,191	3,866	3,305	7,171	7,042	7,070	14,112	502	241	743	2,732	2,800	5,532	4,102	3,749	7,851	2,585	2,501	5,086	1,251	1,280	2,531	24,064	23,153	47,217
	26	1,959	2,103	4,062	3,833	3,521	7,354	6,793	6,620	13,413	472	232	704	2,655	2,433	5,088	3,686	3,204	6,890	2,515	2,406	4,921	1,199	1,190	2,389	23,112	21,709	44,821
Sat	27			0	1,190	1,044	2,234	1,961	1,953	3,914			0			0	372	388	760	359	165	524			0	3,882	3,550	7,432
Sun	28			0	602	795	1,397	1,381	1,294	2,675			0			0	383	411	794	269	320	589			0	2,635	2,820	5,455
	29	1,889	2,273	4,162	3,714	3,372	7,086	6,731	6,647	13,378	437	260	697	2,731	2,862	5,593	4,197	3,742	7,939	2,546	2,608	5,154	1,189	1,289	2,478	23,434	23,053	46,487
	30	1,862	2,259	4,121	3,654	3,550	7,204	6,888	6,880	13,768	492	262	754	2,743	2,738	5,481	4,332	3,788	8,120	2,594	2,619	5,213	1,238	1,253	2,491	23,803	23,349	47,152
				0			0			0			0			0						0			0	0	0	0
				0			0			0			0			0						0			0	0	0	0
				0			0			0			0			0						0			0	0	0	0
				0			0			0			0			0						0			0	0	0	0
				0			0			0			0			0						0			0	0	0	0
				0			0			0			0			0						0			0	0	0	0
				0			0			0			0			0						0			0	0	0	0
				0			0			0			0			0						0			0	0	0	0
				0			0			0			0			0						0			0	0	0	0
				0			0			0			0			0						0			0	0	0	0
				0			0			0			0			0						0			0	0	0	0
				0			0			0			0			0						0			0	0	0	0
				0			0			0			0			0						0			0	0	0	0
				0			0			0			0			0						0			0	0	0	0
				0			0			0			0			0						0			0	0	0	0
				0			0			0			0			0						0			0	0	0	0
				0			0			0			0			0						0			0	0	0	0
				0			0			0			0			0						0			0	0	0	0
				0			0			0			0			0						0			0	0	0	0
				0			0			0			0			0						0			0	0	0	0
				0			0			0			0			0												

# SCRRA-PASSENGER MONTHLY RIDERSHIP

Route ID(s): 1VN, 2AV, 3SB, 4RV, 5OC, 6IE, 7LA, 8BU

For Month: 09/2008

Report Date: 10/6/2008

Train #	M 1	T 2	W 3	T 4	F 5	S 6	S 7	M 8	T 9	W 10	T 11	F 12	S 13	S 14	M 15	T 16	W 17	T 18	F 19	S 20	S 21	M 22	T 23	W 24	T 25	F 26	S 27	S 28	M 29	T 30	Total PAX	Average Wkday	Average	
																																	Sat	Sun
4RV: RIVERSIDE ROUTE																																		
INBOUND																																		
401	0	355	489	645	333	0	0	387	455	596	412	337	0	0	456	800	534	344	382	0	0	393	459	459	415	381	0	0	397	449	9478	451	0	0
403	0	773	819	772	744	0	0	822	784	784	814	789	0	0	639	714	782	779	619	0	0	745	771	819	744	798	0	0	792	792	16095	766	0	0
405	0	486	529	542	510	0	0	496	505	516	482	471	0	0	631	511	518	542	455	0	0	461	537	544	520	468	0	0	541	489	10754	512	0	0
407	0	721	749	709	703	0	0	726	731	712	741	718	0	0	512	637	612	589	638	0	0	657	703	712	731	709	0	0	719	736	14465	689	0	0
409	0	305	254	325	278	0	0	299	271	448	281	221	0	0	257	297	277	340	241	0	0	233	305	241	305	251	0	0	261	246	5936	283	0	0
411	0	23	14	21	31	0	0	22	37	21	21	41	0	0	21	19	21	24	52	0	0	19	13	15	17	48	0	0	21	31	532	25	0	0
Subtotal:	0		2854		2599		0		2783		2751		0		2516		2744		2387		0		2788		2732		0		2731		57260	2727	0	
		2663		3014		0		2752		3077		2577		0		2978		2618		0		2508		2790		2655		0		2743				0
OUTBOUND																																		
402	0	79	82	82	107	0	0	84	73	65	66	129	0	0	59	59	52	57	171	0	0	63	66	71	65	73	0	0	65	61	1629	78	0	0
404	0	722	737	708	658	0	0	702	738	766	667	704	0	0	703	701	777	712	598	0	0	571	748	775	658	687	0	0	748	731	14811	705	0	0
406	0	641	665	968	525	0	0	677	698	720	637	567	0	0	570	681	653	438	638	0	0	655	693	651	749	595	0	0	657	689	13767	656	0	0
408	0	545	529	542	443	0	0	521	544	572	558	461	0	0	497	559	553	532	586	0	0	571	631	714	631	484	0	0	679	581	11733	559	0	0
410	0	417	442	412	424	0	0	401	415	390	415	415	0	0	352	479	498	487	291	0	0	421	461	481	461	413	0	0	472	450	8997	428	0	0
412	0	142	217	236	203	0	0	192	212	203	192	107	0	0	71	173	212	179	128	0	0	197	196	236	236	181	0	0	241	226	3980	190	0	0



**SCRRA-PASSENGER MONTHLY RIDERSHIP**

Route ID(s): 1VN, 2AV, 3SB, 4RV, 5OC, 6IE, 7LA, 8BU

For Month: 09/2008

Report Date: 10/6/2008

Train #	M	T	W	T	F	S	S	M	T	W	T	F	S	S	M	T	W	T	F	S	S	M	T	W	T	F	S	S	M	T	Total PAX	Average Wkday	Average	
	1	2	3	4	5	6	7	8	9	10	11	12	13	14	15	16	17	18	19	20	21	22	23	24	25	26	27	28	29	30			Sat	Sun
Subtotal:	0		2672		2360		0		2680		2535		0		2252		2745		2412		0		2795		2800		0		2862		54917	2615	0	
		2546		2948		0		2577		2716		2383		0		2652		2405		0		2478		2928		2433		0		2738				0
Route	0		5526		4959		0		5463		5286		0		4768		5489		4799		0		5583		5532		0		5593		112177		0	
Total:		5209		5962		0		5329		5793		4960		0		5630		5023		0		4986		5718		5088		0		5481		5342		0

# METROLINK

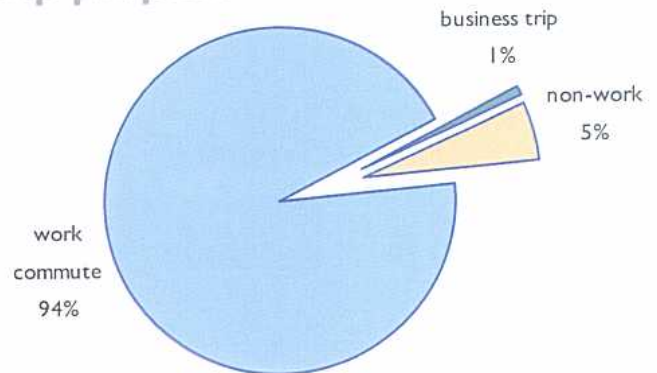
WWW.METROLINKTRAINS.COM



Station connects to the: Inland Empire-Orange County and 91-LA Lines

## Riverside Line 2007 Weekday Fact Sheet

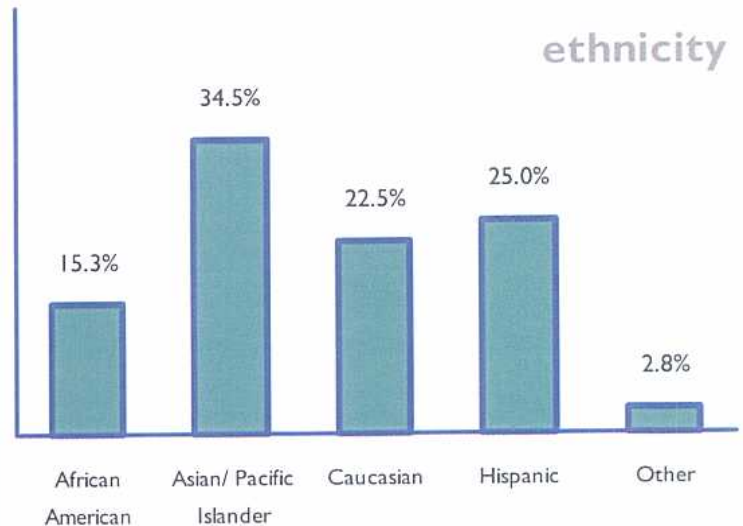
### trip purpose



### ridership stats

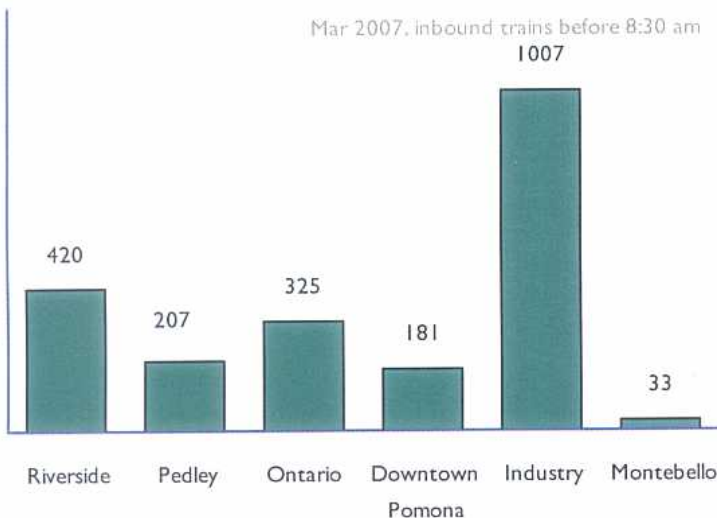
Average weekday ridership (April 2007)	4,942
Average trip length (miles)	37.0
Riders with car available	93.2%
<u>Gender</u>	
Male	46.5%
Female	53.5%
Median household income (2005)	\$77,373
<u>Employment status</u>	
Employed (full-time)	92.0%
Employed (part-time)	2.4%
Self-employed	2.8%
Retired	0.4%
Not employed/seeking employment	0.5%
Student (full-time)	1.9%

### ethnicity

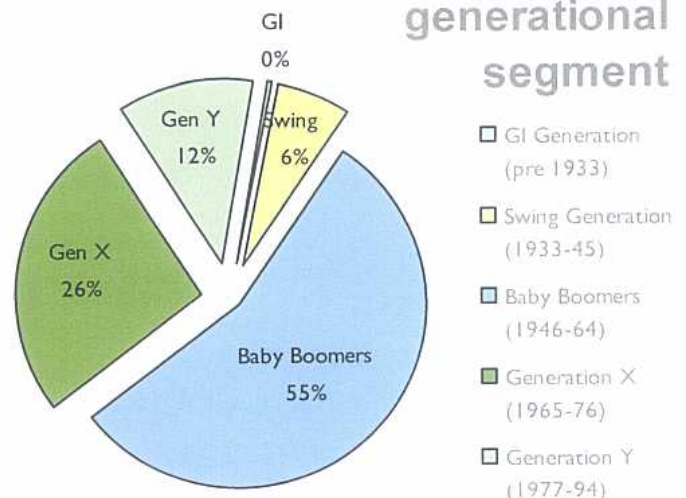


### daily station boardings

Mar 2007, inbound trains before 8:30 am



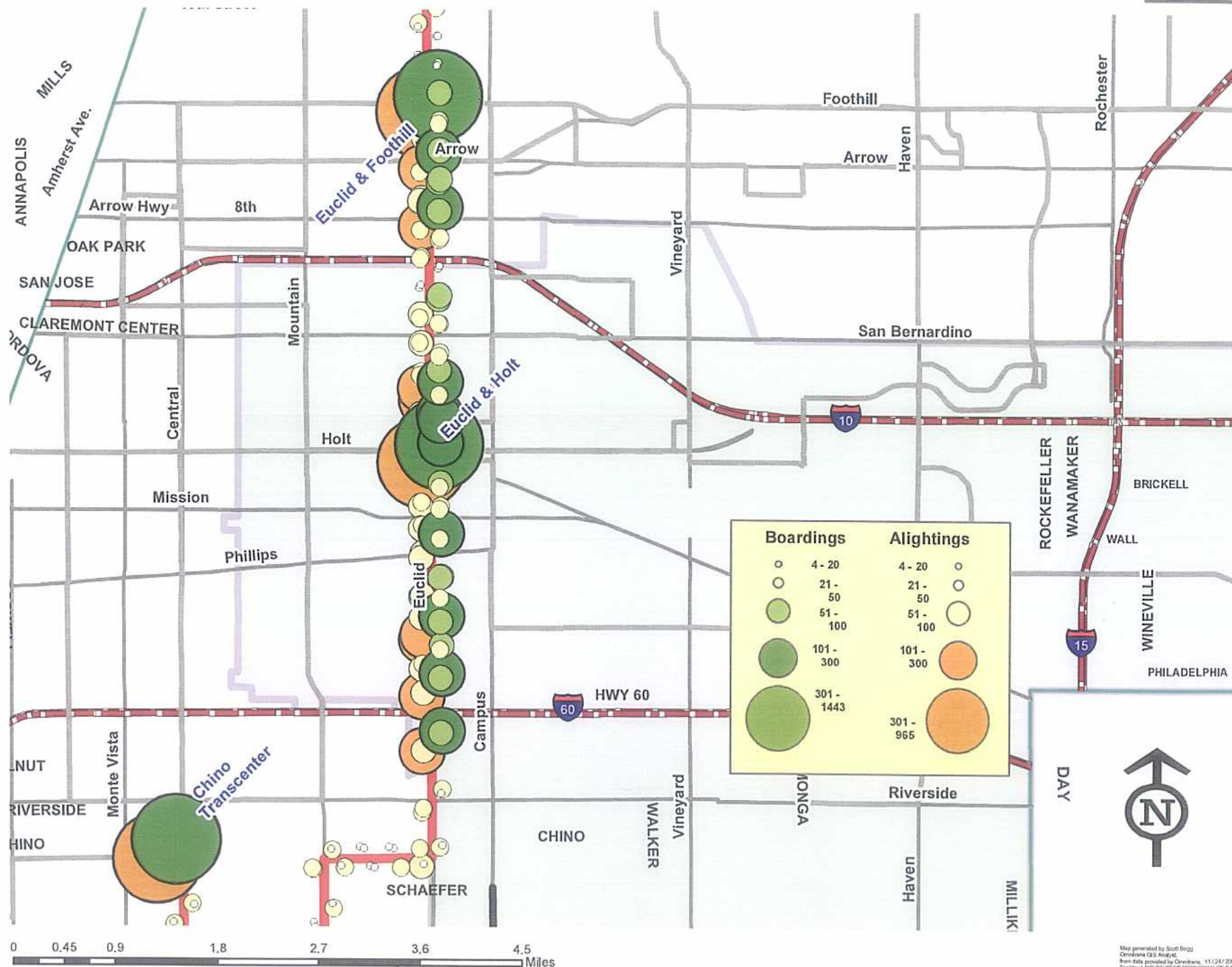
### generational segment





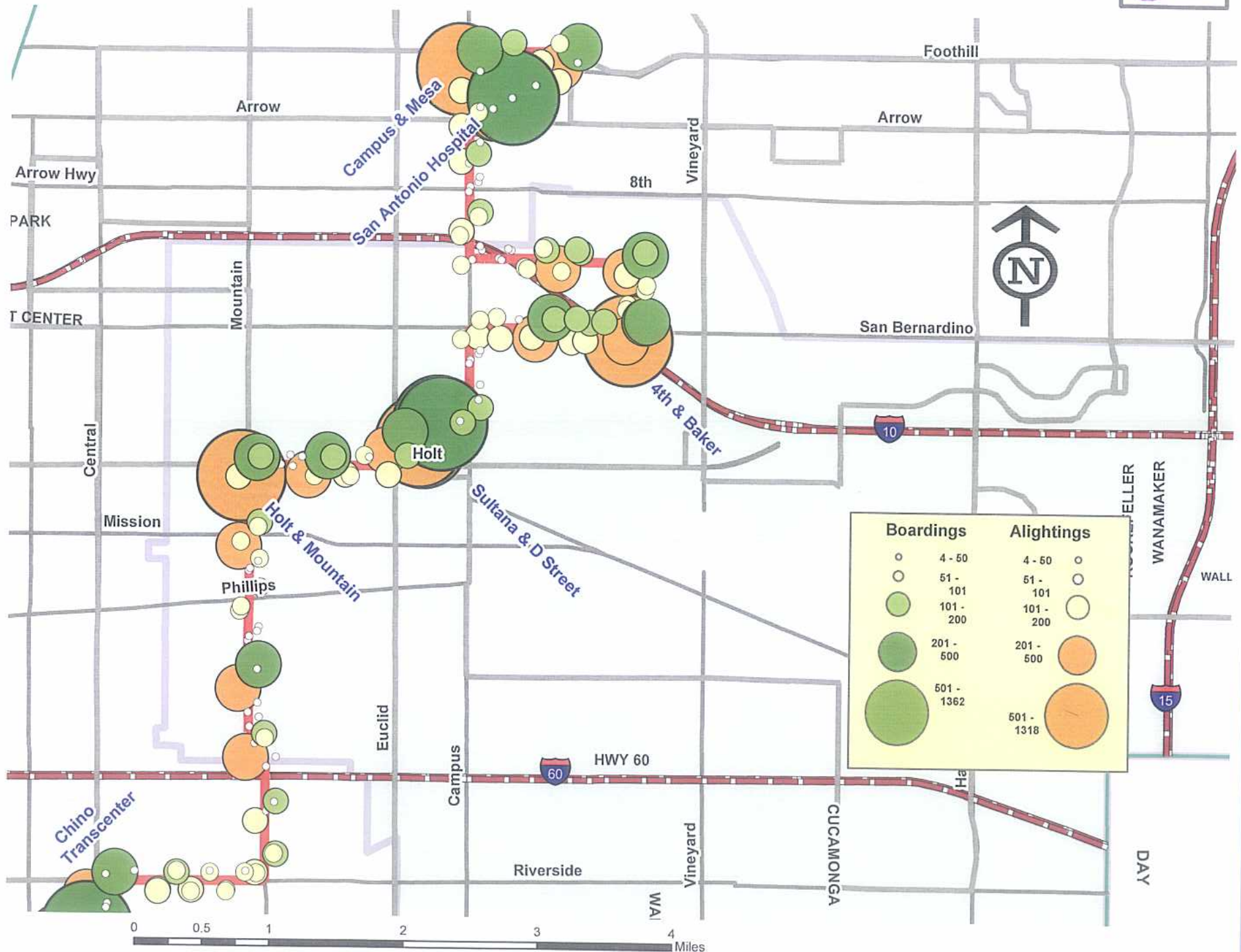
# Route 83 Performance by Stop in Ontario

## Total Boardings and Alightings Over Three Months (July to October, 2008)



# Route 63 Performance by Stop in Ontario

## Total Boardings and Alightings Over Three Months (July to October, 2008)





## ADA / Access Ridership Patterns in Ontario (from May - June, 2006 ridership study)

### Start of Service to 8:00 AM

SITE	Address and Description of Leading Pick Up Sites	# of Pick Ups	# of Individuals	PU / Ind
	<b>PICK UPS</b>			
1	8825 and 9029 Vernon Avenue, Montclair (OPARC, Association of Retarded Citizens, 8939 Vernon Ave, #H / #L, Montclair)	3,382	82	41.24
	<b>Address and Description of Leading Drop Off Sites</b>	<b># of Drop Offs</b>	<b># of Individuals</b>	<b>DO / Ind</b>
	<b>DROP OFFS</b>			
1	Broad region including 2620 S. Plainfield Drive, 2600 S. Arcadian Shores Road, 3633 Country Oaks Loop Drive, and 13250 S. Archibald, in Ontario (Unknown; a significant housing complex in southern Ontario)	610	19	32.11
2	Diffuse assembly of drop offs in central Ontario west of the airport including the following addresses: 708 W. Manzanita Court, 300 E. Francis Street, S. Bonita Place, S. Miramonte Avenue, 1250 S. San Antonio Avenue, 1430 S. Pine Avenue, and 1450 S. Pleasant Avenue (unknown, presumed to be residences)	603	27	22.33
5	Region bounding Cucamonga Street, E. Banyan Street, E. Cottonwood Court, S. Del Norte Place, and S. Phoenix Place in southern Ontario (unknown--part of a large housing complex in former Ag. Preserve in southern Ontario)	411	16	25.69
14	2326 S. Cucamonga Avenue, Ontario (Salem Christian Homes, Inc. senior/disabled social services, 1056 E. Philadelphia)	163	4	40.75

### 8:00 AM to 12:00 Noon

SITE	Address and Description of Leading Pick Up Sites	# of Pick Ups	# of Individuals	PU / Ind
	<b>PICK UPS</b>			
3	1235 E. Francis, and Francis / South Grove intersection, Ontario (Salem Christian Homes, Inc. at 1056 E. Philadelphia and Ontario Industrial Medical Clinic at 2171 S. Grove Ave. #4)	946	29	32.62
5	609 N. Lemon Avenue, Ontario ( Rolling Start, Inc. Senior / Disabled Social Services, at 609 N. Lemon, #2, Ontario)	795	19	41.84
	<b>Address and Description of Leading Drop Off Sites</b>	<b># of Drop Offs</b>	<b># of Individuals</b>	<b>DO / Ind</b>
	<b>DROP OFFS</b>			
3	2326 S. Cucamonga Avenue, Ontario (near Salem Christian Homes, Inc., on 1056 E. Philadelphia, Ontario)	363	9	40.33
6	W. La Deney Dr. and 840 W. 6th Street, Ontario--within blocks of each other (unknown).	256	7	36.57
11	Region around 1442 E. Cottonwood St., E. Deerfield St. and E Fairfield Ct, and E. Philadelphia St.,	226	19	11.89
14	1500 S. Pleasant Avenue, Ontario (just blocks from the Salvation Army, Ontario Corps--1412 S. Euclid Avenue--and De Anza Middle School--1450 S. Sultana Avenue.	212	5	42.40
19	226 W. Bonnie Brae Court, Ontario (unknown)	179	5	35.80
23	500 N. Humbolt Place, Ontario (unknown)	164	5	32.80
25	2032 E. Olive Court, Ontario (unknown)	160	4	40.00

### 12:00 Noon to 3:00 PM

SITE	Address and Description of Leading Pick Up Sites	# of Pick Ups	# of Individuals	PU / Ind
	<b>PICK UPS</b>			
1	W. La Deney Dr. and 840 W. 6th Street, Ontario--within blocks of each other.	384	10	38.40
3	2326 S. Cucamonga Ave., Ontario (near Salem Christian Homes, Inc., on 1056 E. Philadelphia, Ontario)	379	10	37.90
4	6351 Nantucket Ct., and region of Palm Place and Walnut Avenue in Chino (near Circle of Friends, Senior / Disabled Social Services, 6349 Lee Ct., Chino)	364	9	40.44
8	12454 Sycamore Avenue, Chino (between Jericho Outreach Women's Facility and Family Services and Senior Information and Assistance / JESD / CalWORKSs in Chino and Ontario, respectively)	257	6	42.83
9	708 W. Manzanita Court, Ontario (and always at 2:00 or 2:30 PM).	253	6	42.17
10	13165 Oaks Avenue, Chino (near Aletheian Christian Foundation Family Services, 12801 N. Oaks Street)	215	5	43.00
11	Another example of clockwork pickups: 2620 S. Arcadian Shores, every week day, at 2:40 PM, the same five individuals are picked up at this site; apparently a residential site in south Ontario (the former Ag. Preserve)	211	5	42.20
12	226 W. Bonnie Brae Court, Ontario (near Chaffey College on 211 W. 5th Street, Ontario)	172	4	43.00
	<b>Address and Description of Leading Drop Off Sites</b>	<b># of Drop Offs</b>	<b># of Individuals</b>	<b>DO / Ind</b>
	<b>DROP OFFS</b>			
5	Mostly around 1235 East Francis Street, Ontario	1,075	29	37.07
8	9007 Arrow Route, Rancho Cucamonga	570	16	35.63
11	Vicinity of 9029 Vernon Avenue, Montclair (OPARC Association for Retarded Citizens, 8939 Vernon Avenue, Montclair)	300	16	18.75

### 3:00 PM to 6:00 PM

SITE	Address and Description of Leading Pick Up Sites	# of Pick Ups	# of Individuals	PU / Ind
	<b>PICK UPS</b>			
1	2326 S. Cucamonga Avenue and 2900 S. Del Norte, Ontario (10 individuals picked up routinely at these two addresses)	382	10	38.20
5	600 block of W. I Street and 834 W. H Street, Ontario (six riders in total always picked up here)	233	6	38.83
8	2930 S. Del Norte Place, Ontario (same six riders get picked up here all the time)	221	6	36.83
11	1813 N. Calaveras Avenue, Ontario (same four riders are always picked up from here, several blocks from Joyful Manor 2).	174	4	43.50
12	2620 S. Planfield Drive, Ontario (four riders--the same ones--always picked up here)	174	4	43.50
14	2032 E. Olive Court, Ontario (same four riders get picked up here routinely)	169	4	42.25
18	Oak Glen Avenue and Evert Street, Ontario (the same five people picked up near this intersection)	154	5	30.80
23	1700 to 1750 S. Miramonte Avenue, Ontario (the same three individuals are picked up here...always)	131	3	43.67
24	9700 N. Benson Avenue in Ontario (the same four individual always picked up from this address)	123	4	30.75
25	1420 to 1520 W. Fifth Street, in Ontario (same six individuals)	123	6	20.50
27	1130 W. J Street (three individuals are always picked up very near here), Ontario.	117	3	39.00



	Address and Description of Leading Drop Off Sites	# of Drop Offs	# of Individuals	DO / Ind
	<b>DROP OFFS</b>			
2	9029 Vernon Avenue, Montclair (OPARC, 8939 Vernon #L, Montclair)	1770	44	40.23
9	4840 Ontario Mills Pkwy (just outside Mills Circle, Ontario Mills Mall and Ontario Mills stop)	50	5	10.00

### From 6:00 PM to End of Service

There are no large concentrations of ADA / Access pick ups or drop offs within Ontario at this time period.

