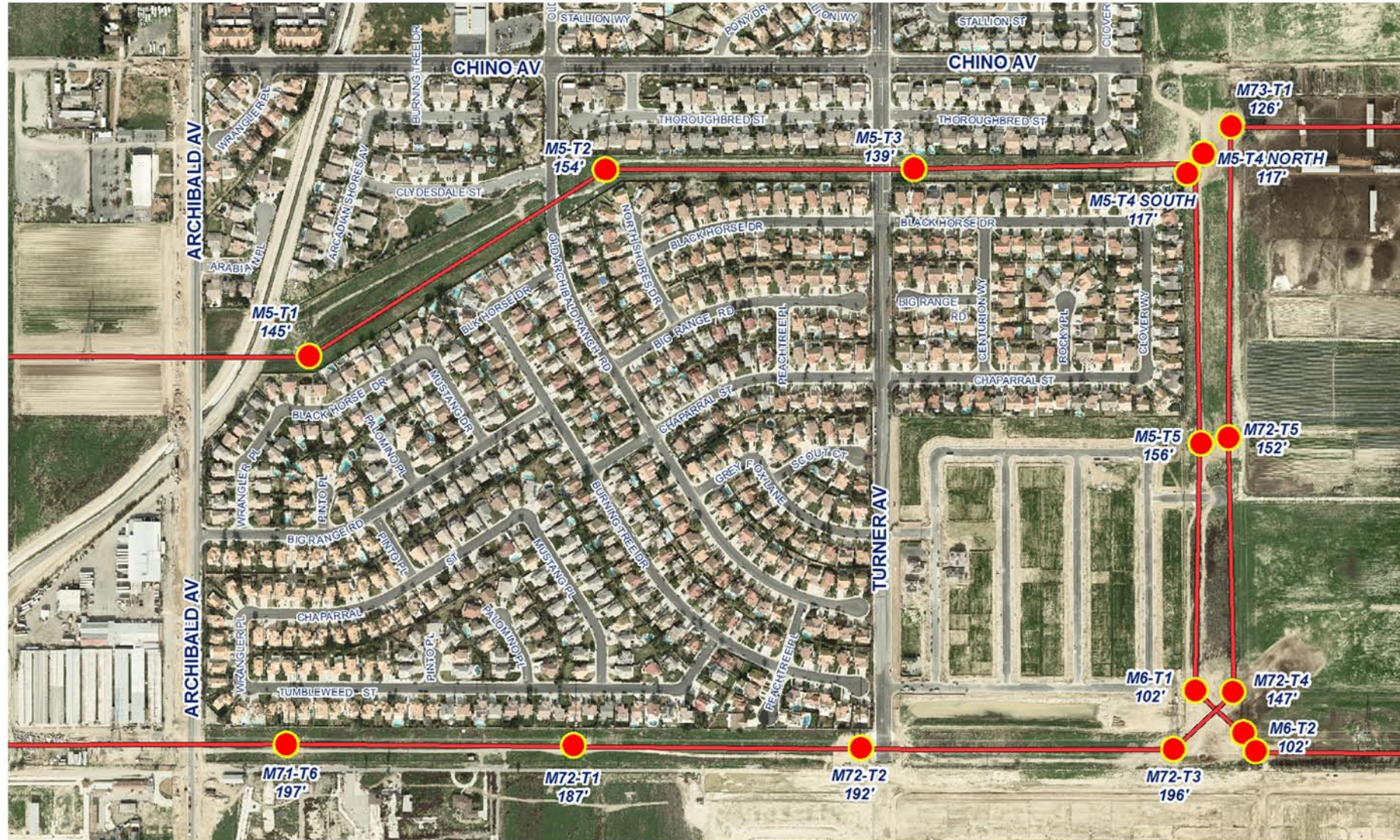


Verification of TRTP Tower Measurements - Sample of 5



TOWER #	TOWER HEIGHT	DIRECTION TO RESIDENCE WALL	DISTANCE TO RESIDENCE WALL*
M5-T1	145	North	169'-5"
		South	51'-4"
M5-T2	154	North	25'-2"
		South	51'-3"
M5-T3	139	North	36'-11"
		South	37'-1"
M5-T4 (North)	117	Southwest	84'-2"
M5-T4 (South)	117	Southwest	48'-6"
M5-T5	156	West	33'-7"
M6-T1	102	West	47'-10"
M6-T2	102	West	207'-0"
M71-T6	197	North	71'-2"
M72-T1	187	North	69'-1"
M72-T2	192	North	72'-3"
M72-T3	196	North	46'-2"
M72-T4	147	West	152'-0"
M72-T5	152	West	178'-9"
M73-T1	126	Southwest	260'-11"
		Northwest	304'-0"

* Note: Distances measured from wall to base of pole. Pole arms are estimated to extend 30' out from the poles.