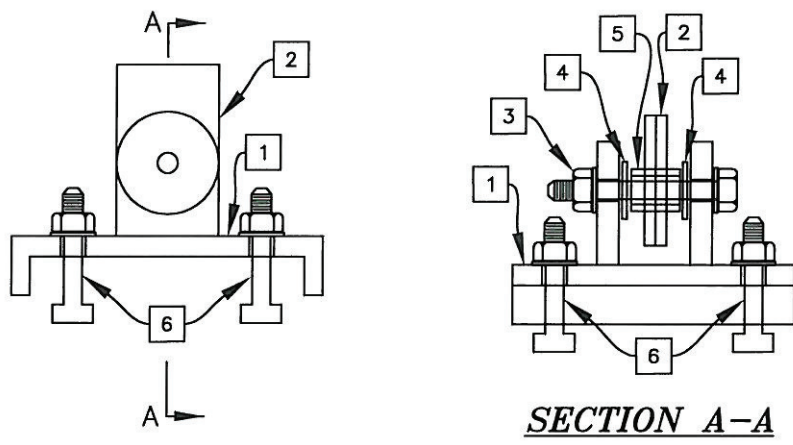


NOTES FOR MOUNTING ASSEMBLY

- 1 LOWER MOUNTING ASSEMBLY, WITH GASKET.
- 2 UPPER MOUNTING ASSEMBLY (TAB).
- 3 BOLT, 1/2 INCH, STAINLESS STEEL, WITH SELF-LOCKING NUT.
- 4 FLAT WASHER, STAINLESS STEEL.
- 5 BUSHING, BRONZE.
- 6 MOUNTING BOLT, 1/4 INCH MINIMUM, WITH NUT AND LOCK WASHER, OR SELF-LOCKING NUT AND COTTER KEY.



APPROVED BY:				
<i>Louis B. Abi-Younes</i>		44485	8-7-14	
LOUIS B. ABI-YOUNES, CITY ENGINEER		RCE	DATE	
RECOMMENDED:				
<i>Tom Danna</i>		2013	8/7/14	
TOM DANNA, TRAFFIC/TRANSPORTATION MANAGER		TE	DATE	
REV	DESCRIPTION	BY	APP'D	DATE

CITY OF ONTARIO	
MAST ARM MOUNTED ILLUMINATED STREET NAME SIGN	STANDARD DRAWING NUMBER 5016