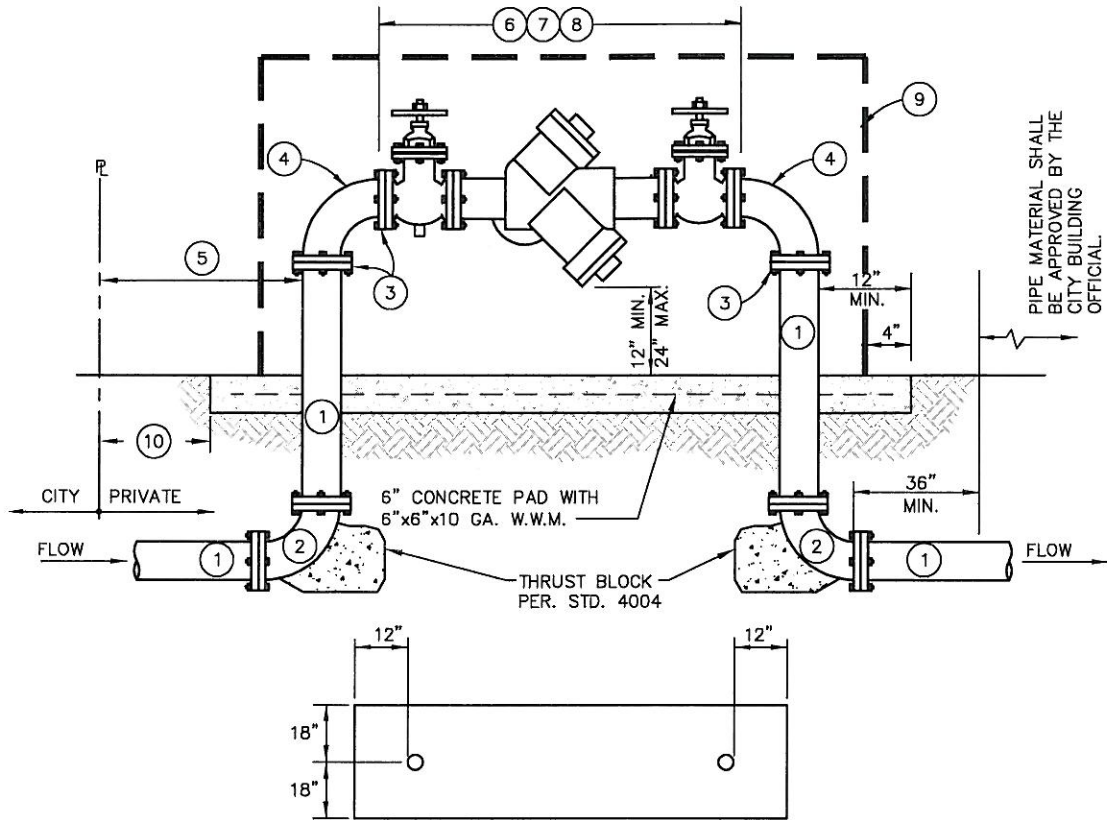


ASSEMBLY PAINTED WITH PRIMER AND TWO COATS OF RAL 6009 FIR GREEN



CONCRETE PAD - PLAN VIEW

NOTES:

- ① STANDARD STEEL PIPE SCHEDULE 40 OR CML&C. PAINTED ABOVE GRADE.
- ② WELDED ELBOW STEEL SCHEDULE 40 OR CML&C.
- ③ WELD SLIP ON FLANGE, TO MATCH BACKFLOW PREVENTION ASSEMBLY.
- ④ FLANGED ELBOW, STEEL, TO MATCH BACKFLOW PREVENTION ASSEMBLY.
- ⑤ NO CONNECTION SHALL BE INSTALLED BETWEEN THE METER AND THE BACKFLOW ASSEMBLY.
- ⑥ ASSEMBLY SHALL BE ON THE LATEST U.S.C. F.C.C.C. & H.R. INSTITUTE LIST AND COMPLY WITH STATE OF CALIFORNIA DEPARTMENT OF PUBLIC HEALTH GUIDELINES.
- ⑦ BACKFLOW ASSEMBLY SHALL BE INSTALLED HORIZONTAL AND LEVEL, UNLESS ALTERNATIVE ORIENTATION APPROVED BY THE STATE OF CALIFORNIA DEPARTMENT OF PUBLIC HEALTH AND U.S.C. F.C.C.C. & H.R.
- ⑧ BACKFLOW ASSEMBLY SHALL BE LOCATED IN LANDSCAPE SCREENING AREAS, OR AREAS NOT VISIBLE TO PUBLIC VIEW.
- ⑨ OPTIONAL STRONGBOX VANDAL RESISTANT ENCLOSURE, SIZE AS NECESSARY. PAINTED BY THE MANUFACTURER RAL 6009 FIR GREEN.
- ⑩ ASSEMBLY SHALL BE INSTALLED WITH A SEPARATION OF 3' MINIMUM TO 5' MAXIMUM FROM THE CONCRETE PAD TO THE PROPERTY LINE OR ADJACENT BACK OF SIDEWALK, WHICHEVER IS CLOSER, TO ALLOW FOR LANDSCAPE SCREENING.



APPROVED BY:				
<i>Louis Abi-Younes</i>		44485	12/1/14	
LOUIS ABI-YOUNES, CITY ENGINEER		RCE	DATE	
RECOMMENDED BY:				
<i>Dennis Meja</i>		62268	10/31/14	
DENNIS MEJA, UTILITIES ENGINEERING DIVISION MGR.		RCE	DATE	
REV	DESCRIPTION	BY	APP'D	DATE

CITY OF ONTARIO	
BACKFLOW PREVENTION ASSEMBLY 3" & LARGER - REDUCED PRESSURE DEVICE	STANDARD DRAWING NUMBER
	4207