

APPLICANT/OWNER INFORMATION (print or type)

Applicant's Representative: _____
Address: _____
Telephone No.: _____ Fax No.: _____

(For staff use only)

File No.: PSGPO2-006

Related Files: _____

Submittal Date: 12/02/02

Rec'd By: SM

Fees Paid: \$ 715

Receipt No.: R200205796
CE # 1899

Action: ☒ Approved ☐ Denied

By: SM

Date: 12/2/02

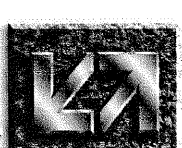
Site Address (include N, S, E or W): NWC 6th & Mountain
Assessor's Parcel No.: 100827111
Development Name: _____
Zone: _____ Euclid Avenue Overlay District? ☐ Yes ☐ No

This image shows a single sheet of white paper with horizontal blue or grey ruling lines. The lines are evenly spaced and run across the width of the page. There is no handwriting or printed text on the paper.

MOUNTAIN VILLAGE ENTERTAINMENT CENTER

Sign Program for

Mountain Village Entertainment Center Ontario, CA



SUPERIOR
ELECTRICAL ADVERTISING

1700 West Anaheim Street
Long Beach, California
908 13-1195
phone: 562.495.3808
facsimile: 562.435.1867

www.superiorsigns.com
design@superiorsigns.com

Project:
Mountain Village
Food Court

Address:
Mountain Village
Entertainment Center
Ontario, CA

Account Manager:
Mike Gray

Designer:
M. Miller

Scale:
AS NOTED

Design No.:
01-07-1968-02

Date: *Revised*
~~07-17-01~~ 10-14-02

Reg. No.:

Revisions:
R1 07-23-01 mdm Make
changes to monument
add building B
R2 09-26-02 mdm Change
elevations, remove building A

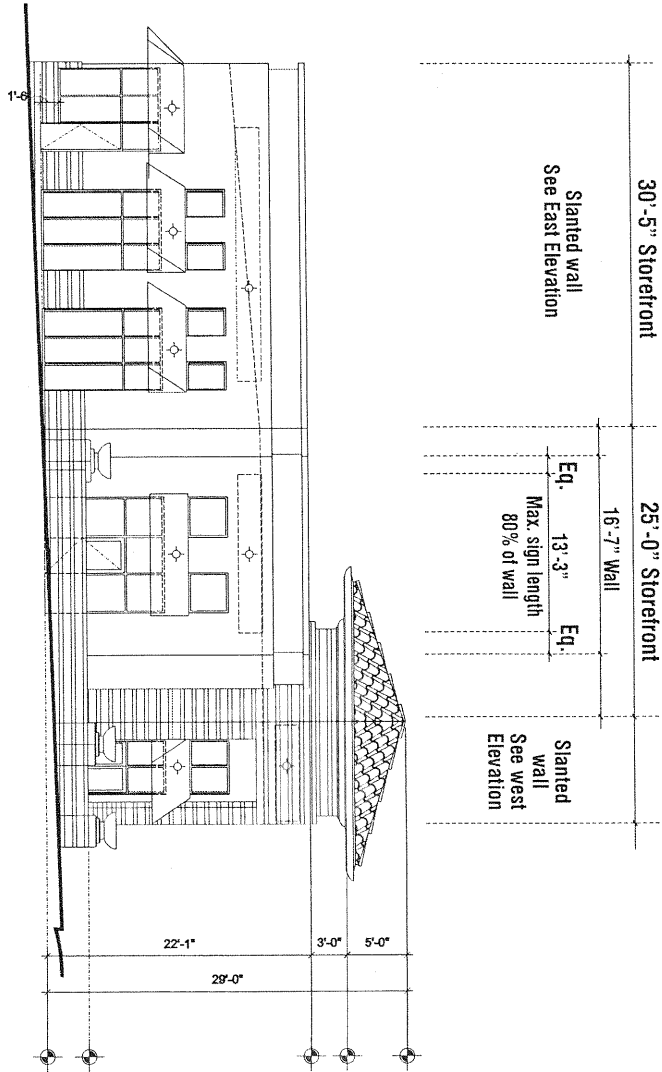
Page: 00 Of: 08

PLANNING DEPARTMENT APPROVED	
<input type="checkbox"/> SUBJECT TO CONDITIONS	PSGP02-006
Approved By: <i>Shuang</i>	Date: 12/2/02

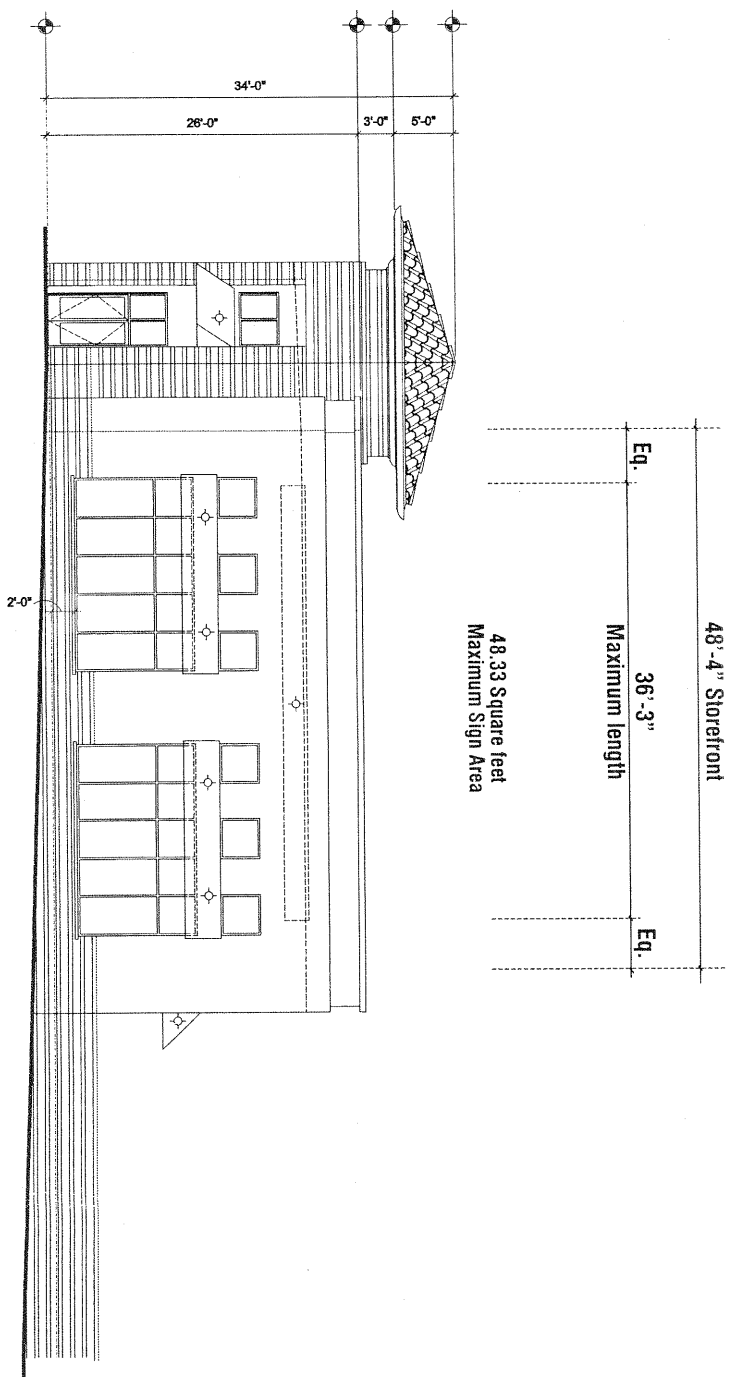
This is an original unpublished drawing created by Superior Electrical Advertising. It is submitted for your approval. It is not to be reproduced, copied, or otherwise used in any form without the written permission of Superior Electrical Advertising, Inc. Any reproduction, copying, or otherwise use of this drawing without the written permission of Superior Electrical Advertising, Inc. is prohibited. The design is the property of Superior Electrical Advertising, Inc. and is not to be used in any other project without the written permission of Superior Electrical Advertising, Inc.

© SEA 2001

Note: The colors depicted here are a graphic representation. Actual colors may vary. See color specifications.



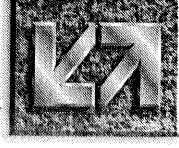
A NORTH ELEVATION - BUILDING A
Scale: 1/16" = 1'-0"



B SOUTH ELEVATION - BUILDING A
Scale: 1/16" = 1'-0"

Note:
One (1) wall sign is permitted for each street facing elevation.
Signs indicated on building are proposed locations.

Note:
Dotted lines indicates sign square footage using Maximum letter height.



SUPERIOR
ELECTRICAL ADVERTISING

1700 West Anaheim Street
Long Beach, California
90813-1195
phone: 562.495.3808
facsimile: 562.435.1867

www.superiorsigns.com
design@superiorsigns.com

Project:
Mountain Village
Food Court

Address:
Mountain Village
Entertainment Center
Ontario, CA

Account Manager:
Mike Gray

Designer:
M. Miller

Scale:
AS NOTED

Design No.:
01-07-1968-02

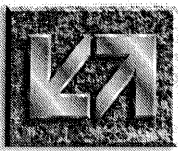
Date:
07-17-01

Reg. No.:

Revisions:
R1 07-23-01 ndm Make
changes to monument
add building B
R2 09-26-02 ndm Change
elevations, remove building A

Page: 05 Of 08

This is an original unpublished drawing created by Superior Electrical Advertising. It is submitted for your approval. It is not to be shown to anyone outside of your organization, nor is it to be reproduced, copied or exhibited in any fashion. The drawing of colors, sizes, materials or illumination method does not alter the design. Ownership of this design is held by Superior Electrical Advertising, Inc. Authorization to use this design in any fashion must be obtained in writing from Superior Electrical Advertising, Inc.
© SEA 2001
Note: The Colors depicted here are a graphic representation. Actual colors may vary. See color specifications.



SUPERIOR
ELECTRICAL ADVERTISING

1700 West Anaheim Street
Long Beach, California
90813-1195
phone: 562.495.3808
facsimile: 562.435.1867

www.superiorsigns.com
design@superiorsigns.com

Project:
Mountain Village
Food Court

Address:
Mountain Village
Entertainment Center
Ontario, CA

Account Manager:
Mike Gray
Designer:
M. Miller

Scale:
AS NOTED

Design No.:
01-07-1968-02

Date:
07-17-01

Reg. No.:

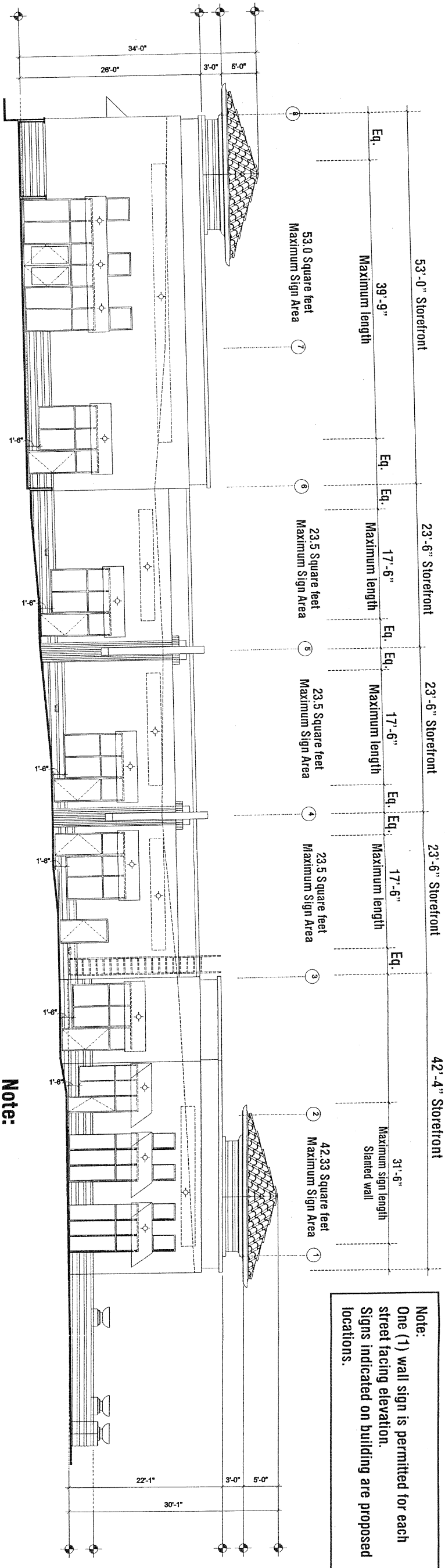
Revisions:
R1 07-23-01 mdm Make
changes to monument
add building B
R2 09-26-02 mdm Change
elevations, remove building A

Page: 04
Of: 08

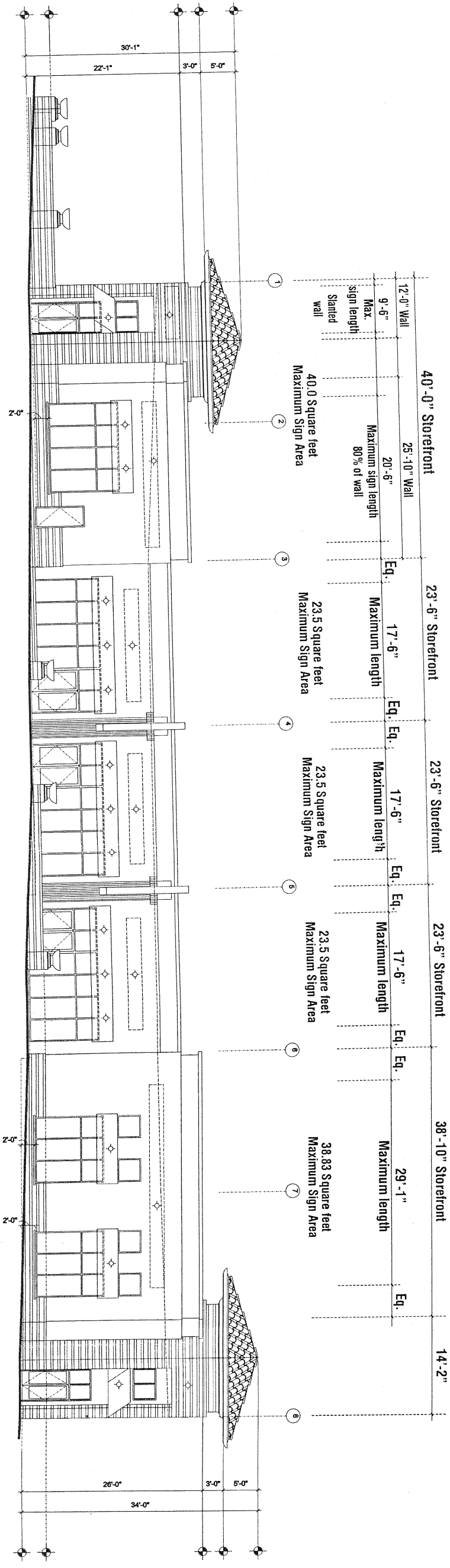
This is an original unpublished drawing
created by Superior Electrical Advertising.
It is submitted for your approval. It is not
to be shown to anyone outside of your
organization, nor is it to be reproduced,
copied or exhibited in any fashion. The
altering of colors, sizes, materials or
illumination method does not alter the
design. Ownership of this design is held
by Superior Electrical Advertising, Inc.
Authorization to use this design is given
to the client for the building shown from
Superior Electrical Advertising, Inc.
© SEA 2001
Note: The colors depicted here are a
graphic representation. Actual colors
may vary. See color specifications.

Note:
One (1) wall sign is permitted for each
street facing elevation.
Signs indicated on building are proposed
locations.

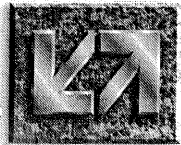
Note:
Dotted lines indicates sign square footage
using Maximum letter height.



A EAST ELEVATION - BUILDING A
Scale: 1/16" = 1'-0"



B WEST ELEVATION - BUILDING A
Scale: 1/16" = 1'-0"



SUPERIOR
ELECTRICAL ADVERTISING

1700 West Anaheim Street
Long Beach, California
90813-1195
phone: 562.495.3808
facsimile: 562.435.1867

www.superiorsigns.com
design@superiorsigns.com

Project:
Mountain Village
Food Court

Address:
Mountain Village
Entertainment Center
Ontario, CA

Account Manager:
Mike Gray

Designer:
M. Miller

Scale:
AS NOTED

Design No.:
01-07-1968-02

Date:
07-17-01

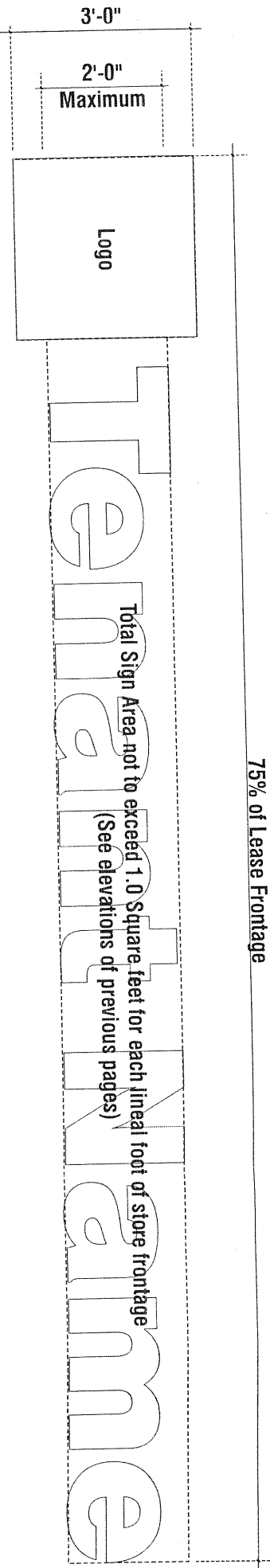
Reg. No.:

Revisions:
R1 07-23-01 mdm Make
changes to monument
and building B
R2 09-28-02 mdm Change
elevations, remove building A

Page: 06 Of: 08

This is an original unpublished drawing created by Superior Electrical Advertising. It is submitted for your approval. It is not to be shown to anyone outside of your organization, nor is it to be reproduced, copied or exhibited in any fashion. The changing of colors, sizes, materials or dimensions is not allowed without the design. Ownership of this design is reserved by Superior Electrical Advertising, Inc. Authorization to use this design in any fashion must be obtained in writing from Superior Electrical Advertising, Inc.
© SEA 2001
Note: The Colors depicted here are a graphic representation. Actual colors may vary. See color specifications.

75% of Lease Frontage

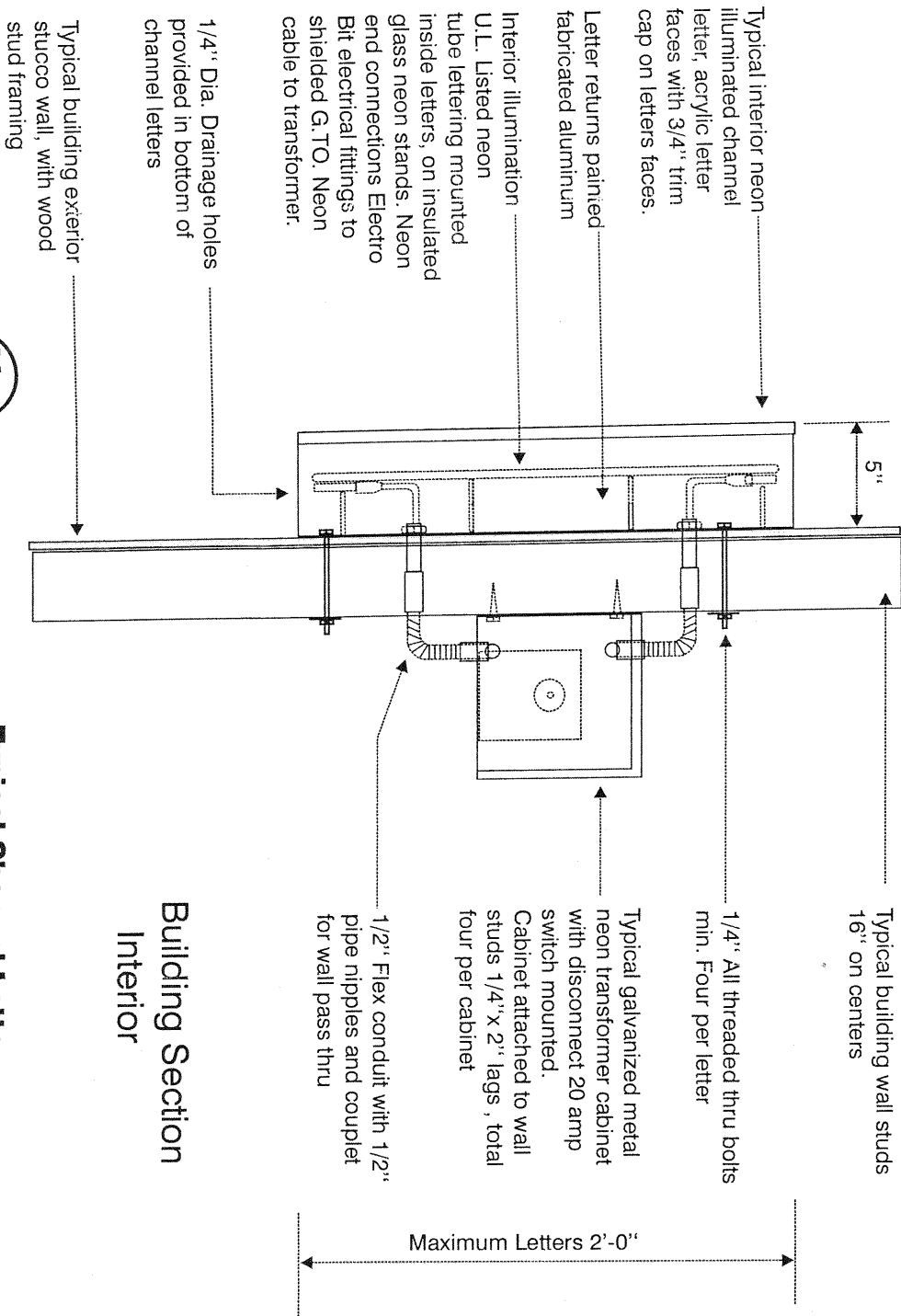


A CUSTOM FABRICATED ALUMINUM CHANNEL LETTERS - FRONT SIGNS

Scale: NTS

Wall signs to be flush against the face of the building and not projecting more than sixteen inches (16") therefrom may be permitted a total sign area, not to exceed 1.0 square feet of signage for each lineal foot of storefront.
Letters not to exceed 2'-0" in height.
Logos not to exceed 3'-0" in height.

Maximum sign length not to exceed ~~eighty percent~~ (75%) of storefront area.



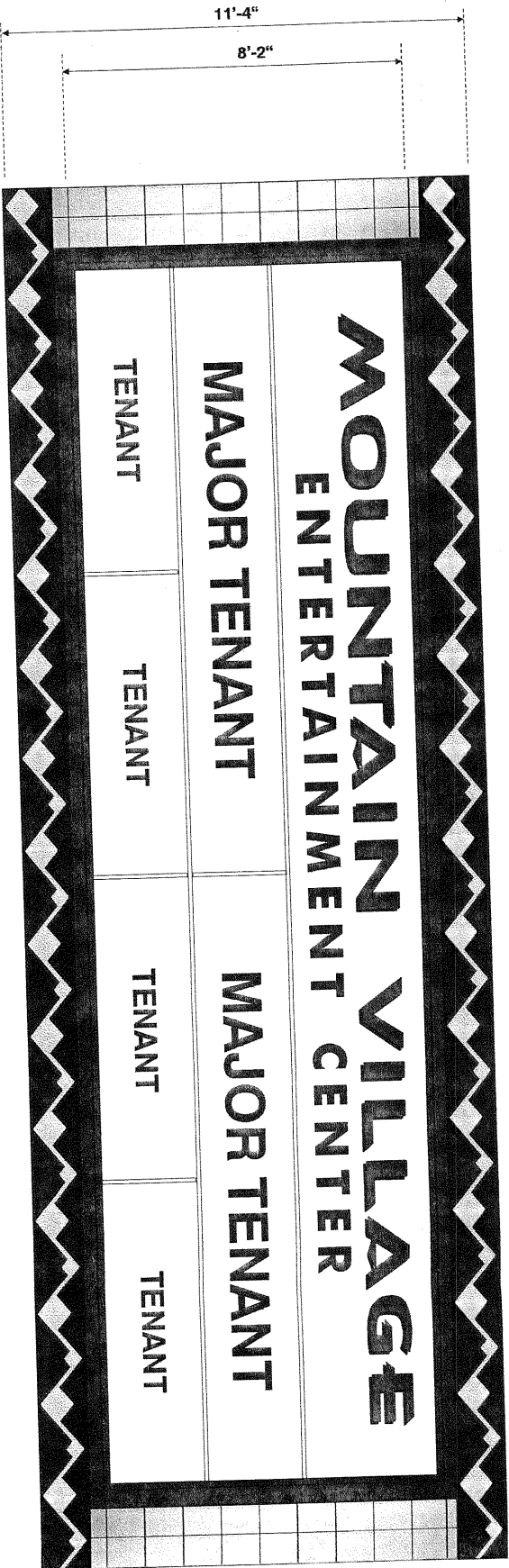
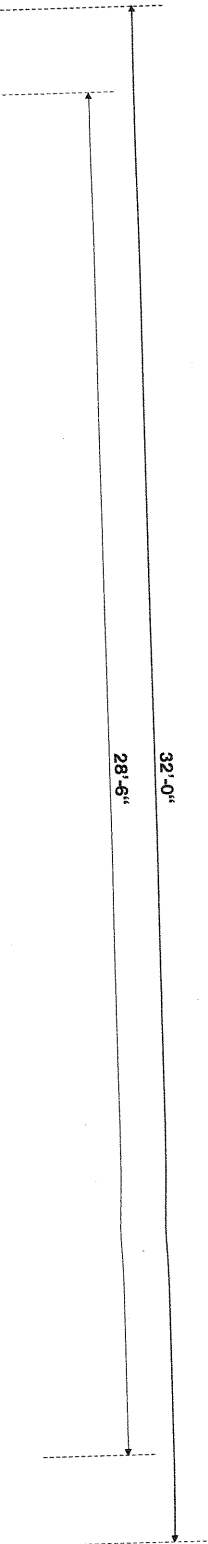
Building Section Interior



LISTED
(or other accredited
testing laboratory)

Typical Channel Letter Installation Detail

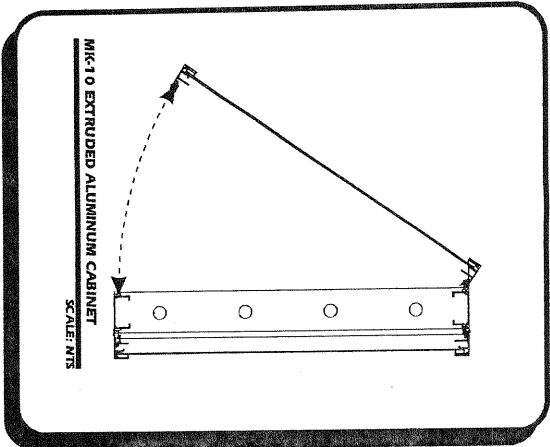
Scale 1 1/2" = 1'-0"



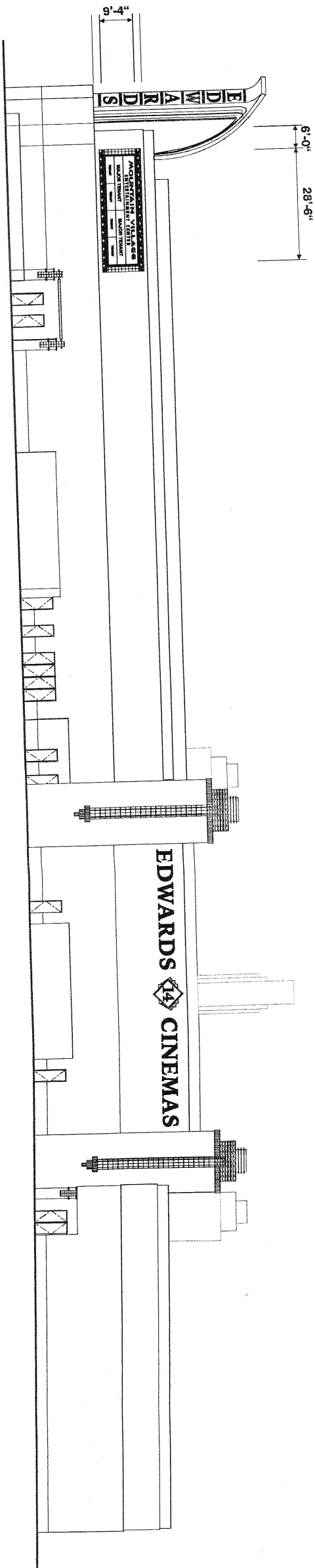
B REFACE EXISTING SINGLE FACE WALL CABINET
Scale: 1/4" = 1'-0"

REFACE EXISTING ALUMINUM CABINET 8'-2" X 28'-6"
REMOVE EXISTING ALUMINUM CABINET WITH 3 LINES OF 24" CHANGEABLE COPY.
FACES TO BE ALUMINUM WITH ROUTED COPY AND BACKED WITH ACRYLIC PLASTIC.
REPLACE LAMPS AND BALLASTS AS NEEDED.

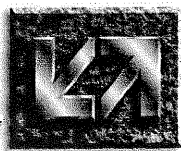
Note:
Copy to be routed from background.
Copy to only illuminate.
Background to be opaque.



EXISTING SINGLE FACE WALL CABINET



B NORTH ELEVATION
Scale: 1/32" = 1'-0"



SUPERIOR
ELECTRICAL ADVERTISING

1700 West Anaheim Street
Long Beach, California
90813-1195
phone: 562.495.3808
fax: 562.435.1867

www.superiorsigns.com
design@superiorsigns.com

Project:
Mountain Village
Food Court

Address:
Mountain Village
Entertainment Center
Ontario, CA

Account Manager:
Mike Gray

Designer:
M. Miller

Scale:
AS NOTED

Design No.:
01-07-1968-02

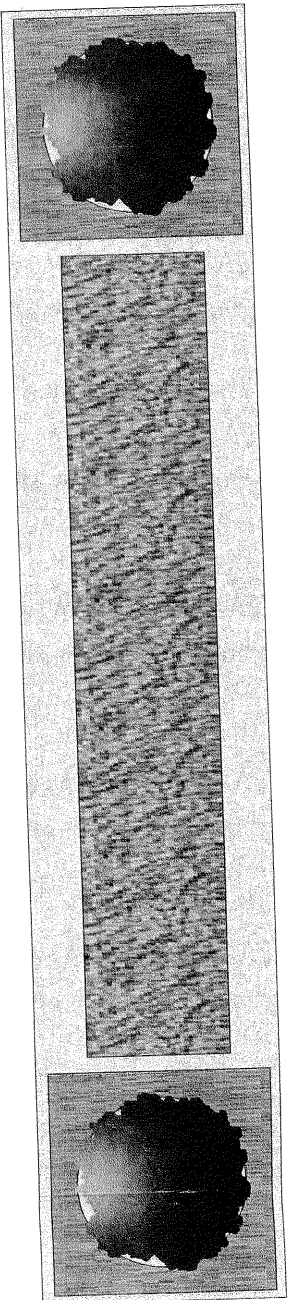
Date:
07-17-01

Reg. No.:

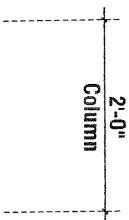
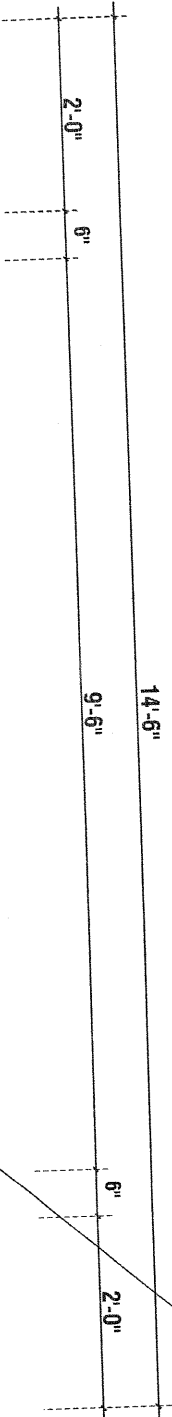
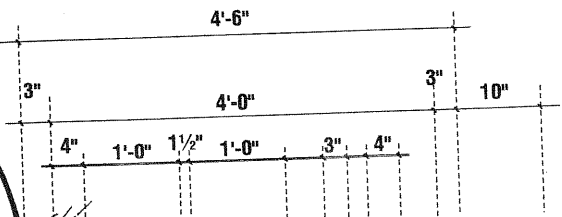
Revisions:
R1 07-23-01 mdm Make
changes to monument
add building B
R2 09-26-02 mdm Change
elevations, remove building A

Page: 07 Of: 08

This is an original, unpublished drawing
created by Superior Electrical Advertising.
It is submitted for your approval. It is not
to be shown to anyone outside of your
organization, nor is it to be reproduced,
copied or exhibited in any fashion. The
changing of colors, sizes, materials or
illumination methods does not alter the
design. Ownership of this design is held
by Superior Electrical Advertising, Inc.
Authorization to use this design in any
fashion must be obtained in writing from
Superior Electrical Advertising, Inc.
© SEA 2001
Note: The colors depicted here are a
graphic representation. Actual colors
may vary. See color specifications.



PLAN VIEW



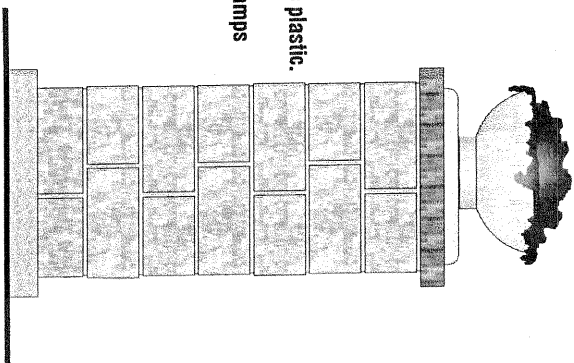
- 1'-6" Deep custom fabricated aluminum cabinet with routed copy. "Mountain Village" and logo to be routed with 3/4" clear acrylic plastic push through letters. Diffuser white vinyl applied to back of acrylic, and sides to be brushed for frosted look. Faces to have translucent vinyl applied first surface.
- "Entertainment Center" to be routed and backed with black/ white acrylic plastic. Black during the day and white at night.
- Interior illumination to be 800ma fluorescent lamp on centers for even lighting.

2" high reveal painted to match center color

1'-0" h. x 3'-0" w. tenant panels.
Faces to be aluminum with routed copy backed with acrylic plastic.

Interior illumination to be 800ma High output fluorescent lamps on centers for even lighting.

Concrete base



SUPERIOR
ELECTRICAL ADVERTISING

1700 West Anaheim Street
Long Beach, California
90813-1195
phone: 562.495.3808
facsimile: 562.435.1867

www.superiorsigns.com
design@superiorsigns.com

Project:
**Mountain Village
Food Court**

Address:
**Mountain Village
Entertainment Center
Ontario, CA**

Account Manager:
Mike Gray

Designer:
M. Miller

Scale:

AS NOTED

Design No.:
01-07-1988-02

Date:
07-17-01

Reg. No.:

Revisions:

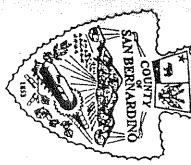
R1 07-23-01 mdm Make
changes to monument
and building B
R2 09-26-02 mdm Change
elevations, remove building A

Page: 08 Of: 08

C INTERIOR ILLUMINATED DOUBLE FACE PROJECT MONUMENT SIGN
Scale: 1/2" = 1'-0"

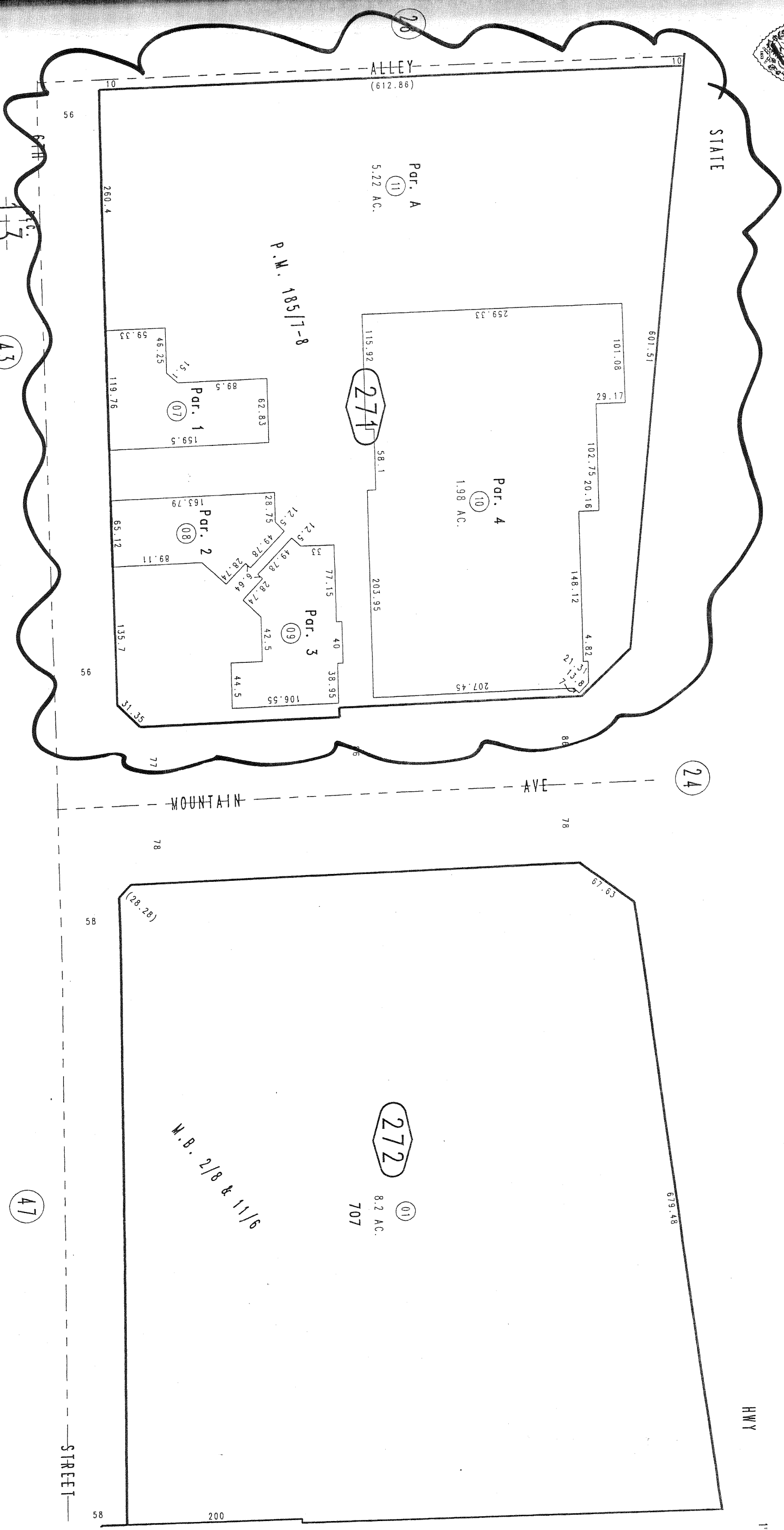
This is an original unpublished drawing created by Superior Electrical Advertising. It is submitted for your approval. It is not to be shown to anyone outside of your organization, nor is it to be reproduced, copied or exhibited in any fashion. The changing of colors, sizes, materials or illumination method does not alter the design. Ownership of this design is held by Superior Electrical Advertising, Inc. Authorization to use this design in any fashion must be obtained in writing from Superior Electrical Advertising, Inc.
© SEA 2001
Note: The Colors depicted here are a graphic representation. Actual colors may vary. See color specifications.

THIS MAP IS FOR THE PURPOSE
AD VALOREM TAXATION ONLY.



Ptn. Ontario Colony Lands, M.B. 2/8 & 11/6

City of Ontario
Tax Rate Area
4069



T.1S.,R.8W.

43

47

REVISED



SUPERIOR
ELECTRICAL ADVERTISING

1700 West Anaheim Street
Long Beach, California
90813-1195
phone: 562.495.3808
facsimile: 562.435.1867

www.superiorsigns.com
design@superiorsigns.com

Project:
Mountain Village
Food Court

Address:
Mountain Village
Entertainment Center
Ontario, CA

Account Manager:
Mike Gray

Designer:
M. Miller

Scale:
AS NOTED

Design No.:
01-07-1968-02

Date:
07-17-01

Reg. No.:

Revisions:
R1 07-23-01 mdm Make
changes to monument
add building B
R2 09-26-02 mdm Change
elevations, remove building A

Page: 01
Of: 08

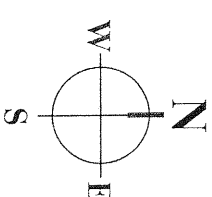
This is an original unpublished drawing
created by Superior Electrical Advertising.
It is submitted for your approval. It is not
to be shown to anyone outside of your
organization, nor is it to be reproduced,
copied or exhibited in any fashion. The
drawing or photo, scan, material or
information thereof does not after the
design is complete, nor is it to be used
by Superior Electrical Advertising, Inc.
Authorization to use this design in any
fashion must be obtained in writing from
Superior Electrical Advertising, Inc.

© SEA 2001

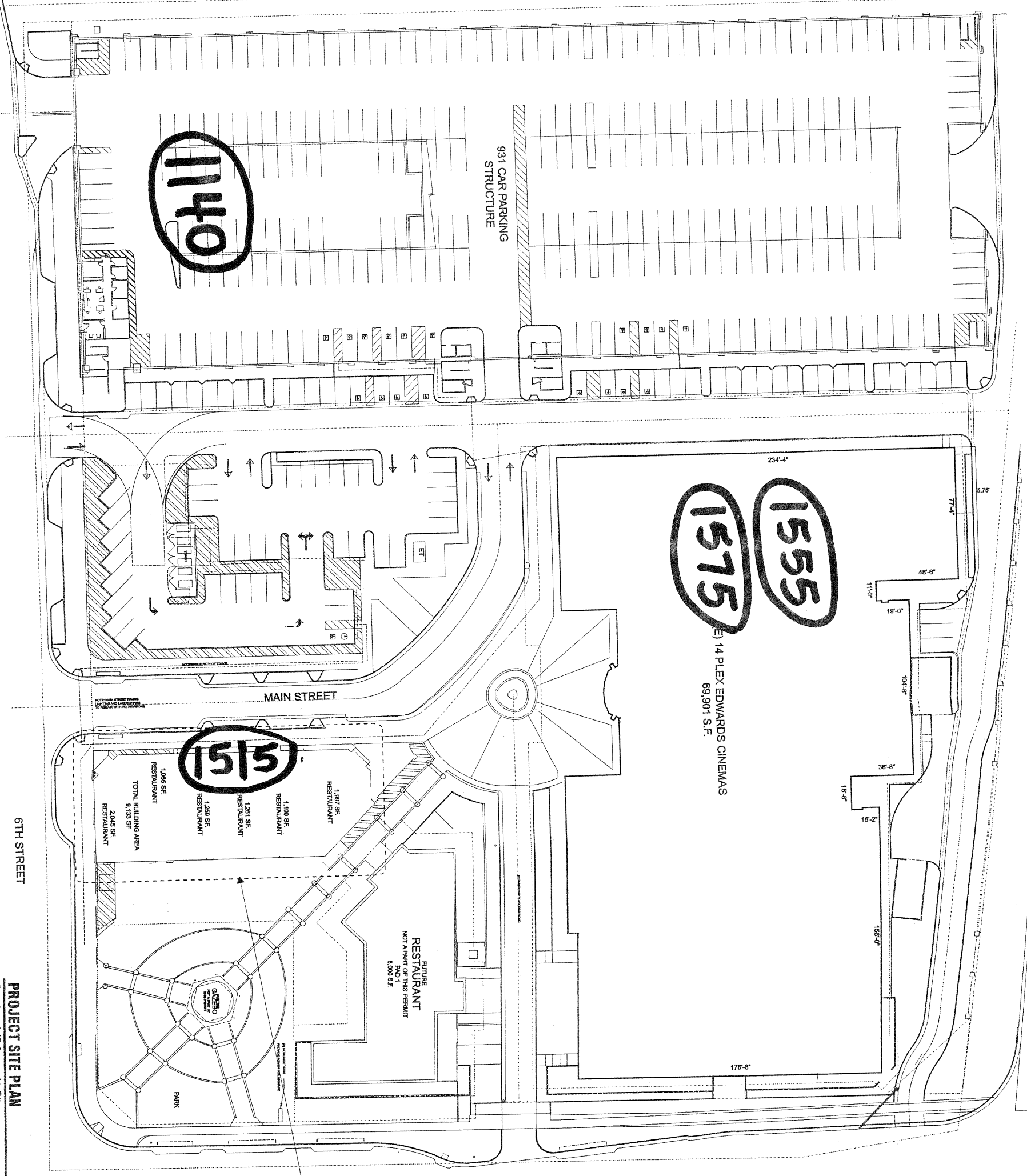
Note: The colors depicted here are a
graphic representation. Actual colors
may vary. See color specifications.

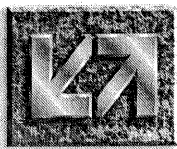
- Addresses -

See page 2
for building floor plan



PROJECT SITE PLAN
Scale: 1/64" = 1'-0"





SUPERIOR
ELECTRICAL ADVERTISING

1700 West Anaheim Street
Long Beach, California
90813-1195
phone: 562.495.3808
facsimile: 562.435.1867

www.superiorsigns.com
design@superiorsigns.com

Project:
Mountain Village
Food Court

Address:
Mountain Village
Entertainment Center
Ontario, CA

Account Manager:
Mike Gray

Designer:
M. Miller

Scale:
AS NOTED

Design No.:
01-07-1968-02

Date:
07-17-01

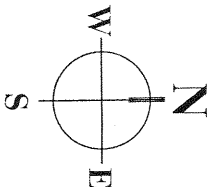
Reg. No.:

Revisions:
R1 07-23-01 mdm Make
changes to monument
add building B
R2 09-26-02 mdm Change
elevations, remove building A

Page: 01 Of: 08

This is an original unpublished drawing
created by Superior Electrical Advertising.
It is to be used for the project it was
designed for and is not to be
reproduced or used in any other
manner without the written consent of
Superior Electrical Advertising, Inc.
The colors depicted here are a
graphic representation. Actual colors
may vary. See color specifications.

© SEA 2001



See page 2
for building floor plan

MOUNTAIN AVENUE

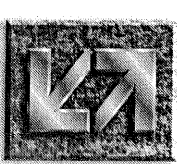
(E) 14 PLEX EDWARDS CINEMAS
69,901 S.F.

931 CAR PARKING
STRUCTURE

MAIN STREET

6TH STREET

PROJECT SITE PLAN
Scale: 1/8" = 1'-0"



SUPERIOR
ELECTRICAL ADVERTISING

1700 West Anaheim Street
Long Beach, California
90813-1195
phone: 562.435.3808
facsimile: 562.435.1867

www.superiorsigns.com
design@superiorsigns.com

Project:
Mountain Village
Food Court

Address:
Mountain Village
Entertainment Center
Ontario, CA

Account Manager:
Mike Gray

Designer:
M. Miller

Scale:
AS NOTED

Design No.:
01-07-1968-02

Date:
07-17-01

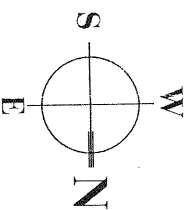
Reg. No.:

Revisions:
R1 07-23-01 mdm Make
changes to monument
add building B
R2 09-26-02 mdm Change
elevations, remove building A

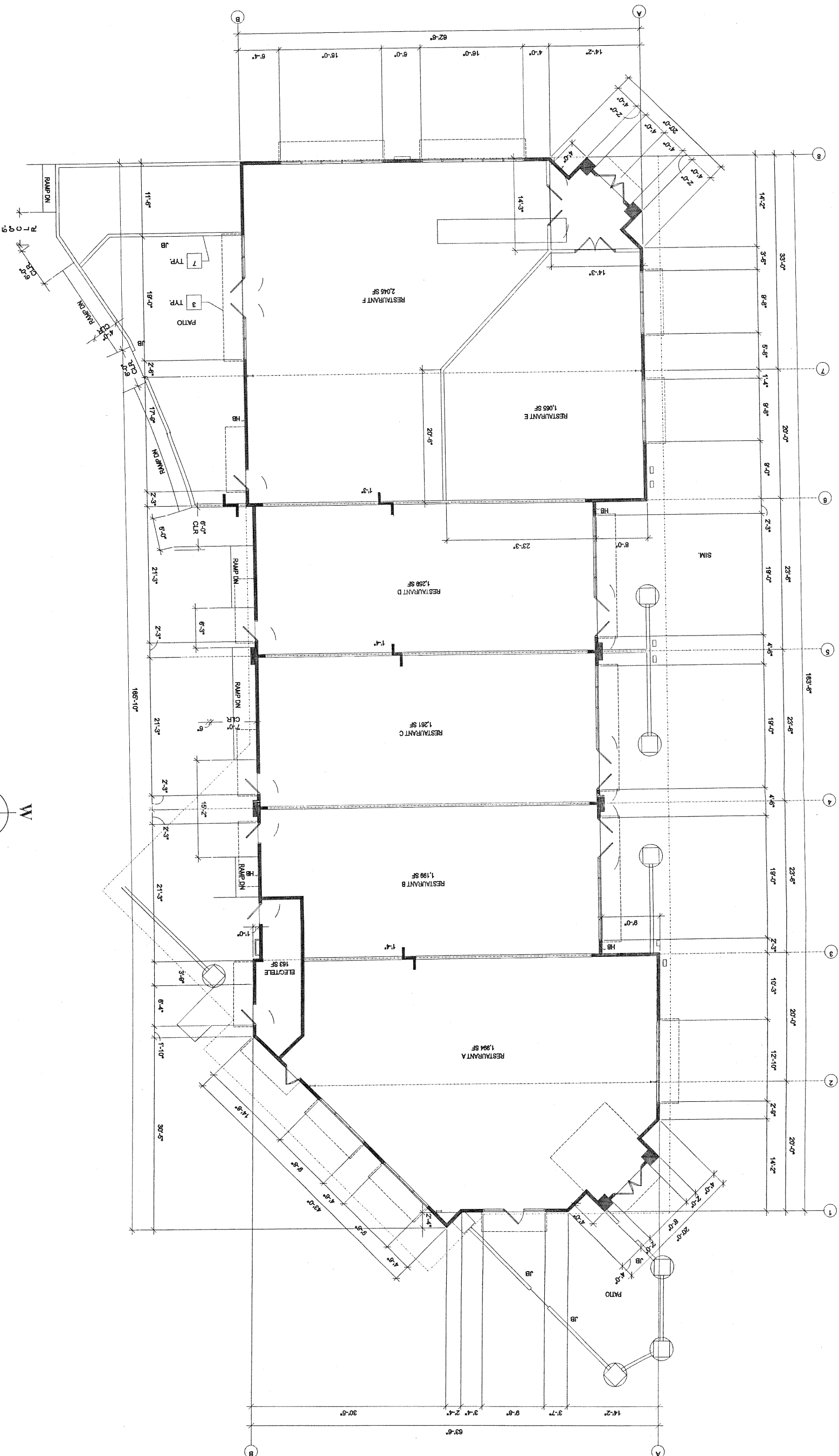
Page: 02 Of: 08

This is an original unpublished drawing
created by Superior Electrical Advertising.
It is submitted for your approval. It is not
to be shown to anyone outside of your
organization, nor is it to be reproduced,
copied or exhibited in any fashion. The
changing of colors, sizes, materials or
illumination method does not alter the
design. Ownership of this design is held
by Superior Electrical Advertising, Inc.
No permission is given to use this design in any
fashion without the written permission from
Superior Electrical Advertising, Inc.

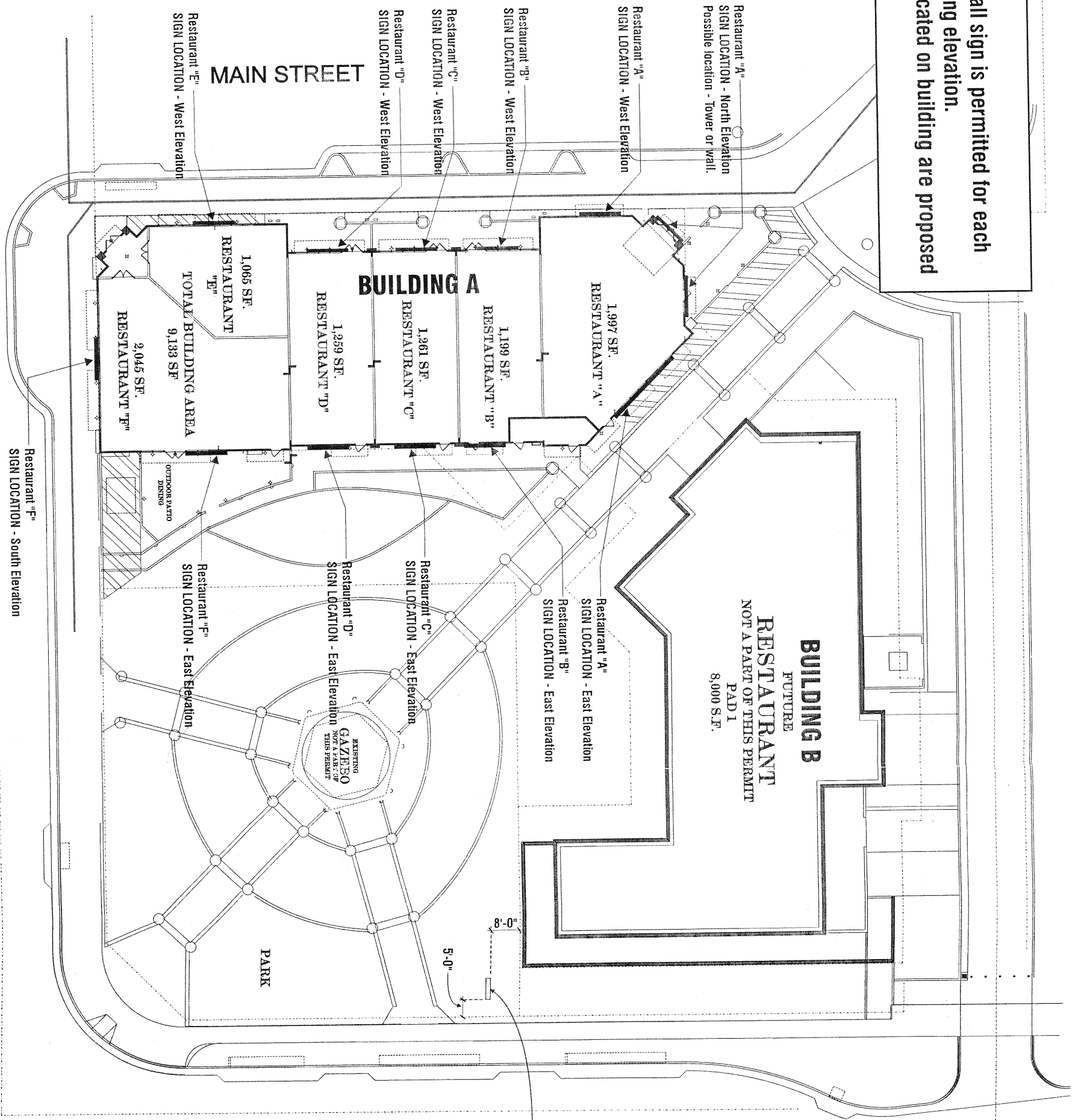
© SEA 2001
Note: The Colors depicted here are a
graphic representation. Actual colors
may vary. See color specifications.



PROJECT FLOOR PLAN
Scale: 1/64" = 1'-0"



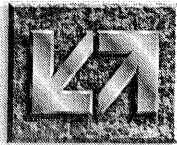
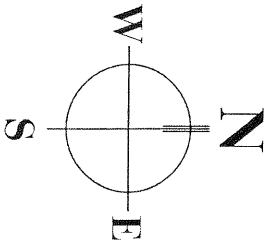
Note:
One (1) wall sign is permitted for each street facing elevation.
Signs indicated on building are proposed locations.



MOUNTAIN AVENUE

SIGN C
DOUBLE FACE MONUMENT

A PARTIAL PROJECT SITE PLAN
Scale: 1/32" = 1'-0"



SUPERIOR
ELECTRICAL ADVERTISING
1700 West Anaheim Street
Long Beach, California
90813-1195
phone: 562.495.3808
facsimile: 562.435.1867
www.superiorsigns.com
design@superiorsigns.com
Project: Mountain Village Food Court

Address: Mountain Village Entertainment Center Ontario, CA

Account Manager: Mike Gray
Designer: M. Miller

Scale: AS NOTED

Design No.: 01-07-1968-02

Date: 07-17-01

Reg. No.:

Revisions:
R1 07-23-01 mdm Make changes to monument add building B
R2 09-28-02 mdm Change elevations, remove building A

Page: 03 Of: 08

This is an original unpublished drawing created by Superior Electrical Advertising. It is submitted for your approval. It is not to be shown to anyone outside of your organization, nor is it to be reproduced, copied or exhibited in any fashion. The detailing of colors, sizes, materials or dimensions shown does not alter the design. Any reproduction of this design is held by Superior Electrical Advertising, Inc. Authorization to use this design in any fashion must be obtained in writing from Superior Electrical Advertising, Inc.
© SEA 2001
Note: The Colors depicted here are a graphic representation. Actual colors may vary. See color specifications.