

### California Ranch—1935 to Present

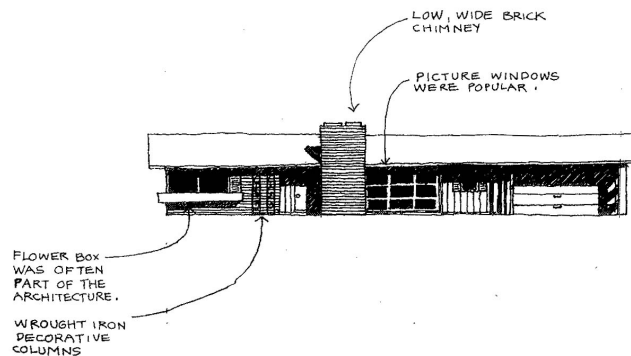


The Ranch style was created from a mix of styles, including the Craftsman, Prairie, and Minimal Traditional styles, as well as elements of the Spanish Colonial style. This mix of styles was combined with the emerging lifestyle changes of Americans after World War II.

Although not as popular in Ontario as the Early Tract homes, there are several examples of the Ranch style. One of the best examples of this style is the Rehkop House on Armsley Square, pictured above left.

#### *Common Features*

- Asymmetrical design
- Spreading, horizontal orientation
- Hip or gable roof, often with deep overhang
- Logical, open floor plan in a rectangular, L, or U-shaped configuration
- Minimal ornamentation
- Attached garage
- Minimal or no front porch stoop
- Board and batten or clapboard siding, or stucco, or a combination
- Brick chimneys
- Picture and casement windows



#### *Features*

#### *Windows*

Windows were typically individual casement, aluminum frame windows. Sliding windows were also used.

#### *Doors*

Doors were typically plain, and painted an accent color.

#### *Colors*

Homes were typically painted in color schemes consisting of 2 to 3 colors. Palettes were muted tones. Trim was usually a brighter color. Sometimes a third accent color was used.